

DATE	PROJECT	LOCATION	TYPE
------	---------	----------	------



PRODUCT FEATURES

- Seamless Diode Free Illumination
- Ultra Slim
- Field Cut 33.4mm (1.31")
- Bend Direction Horizontal
- Dimmable
- IP67 for Interior and Exterior Applications
- Available in Standard Lengths of 1,2,3,4,5M Reels

PRODUCT SPECIFICATIONS

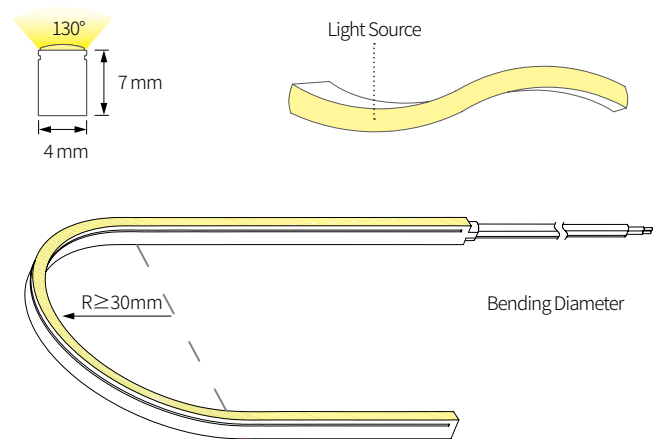
IP Rate	IP67
Lamp Power	7.7 W/m
Power Input	24V DC
Color Rendering	Ra>90
Operating Temperature Ranges	-20°C to 50°C
Maximum Length	5,000mm (16.4')
Minimum Length	33.4mm (1.31")
Minimum Bending Diameter	30mm(1.18")
Beam Angle	130°
Material	Silicon

SPECIFICATIONS TABLE



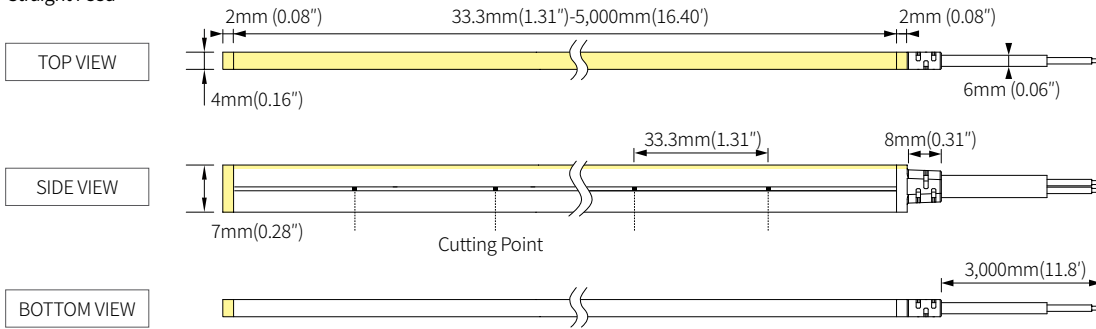
Model Number	Color	Lamp Power	Luminous Flux (lm/ft)	Lumen/W
FNN1 27K-24V-C90	2700K	2.34W/ft	120 lm/ft	56 lm/W
FNN1 30K-24V-C90	3000K		120 lm/ft	56 lm/W
FNN1 35K-24V-C90	3500K		120 lm/ft	56 lm/W
FNN1 40K-24V-C90	4000K		130 lm/ft	57 lm/W

PHYSICAL SPECIFICATIONS



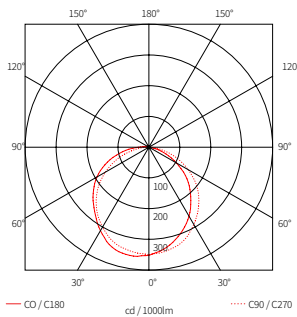
DIMENSIONS

* Straight Feed



BEAM SPREADS

FNN1 30K-C90-1M
56lm/W 432lm

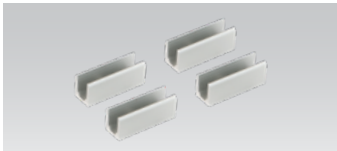


COMPONENTS



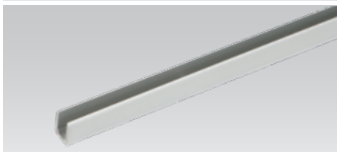
FNN1 Narrow

- __ FNN1-(color)K-24V-C90-5M
- __ FNN1-(color)K-24V-C90-4M
- __ FNN1-(color)K-24V-C90-3M
- __ FNN1-(color)K-24V-C90-2M
- __ FNN1-(color)K-24V-C90-1M



Mounting Brackets

- __ FNN1-BRACKET1



FNN1 Extrusion Line

- __ FNN1-EXL (1,000mm)



FNN1 Flexible Extrusion Line

- __ FNN1-EXL-FLEX (1,000mm)



Strap

- __ FNN1-Strap
- *Order Separately



End Cap

- __ FNN1-End Cap
- *Order Separately



12 Port Hub

- __ 12 Way distributor
- Included with Cord and Plug drivers. Order separately for 3rd Party Drivers



LED Drivers

- __ FLC30-24V/XL (30W)
- __ FLC75-24V/XL (75W)
- with distributor and power cord 1,800mm(6')



Driver Junction Box

- __ MHWB-FLE



Hard Wire Driver

- __ FLE60-24V-L10-DIM
- __ FLE90-24V-L10-DIM

Additional Power Supply/Driver Options Available. Please consult Factory.



Hard Wire Driver

- (90V to 300V)
- __ XLD200-224V-FCL-DIM
- __ XLD75-124V-FC



Dimming Interface

- (100W/CH, 1CH)
- 0-10V Signal
- __ FDC-L10 (Max. 100W)

A larger selection of drivers are available including remote and hard wire drivers. Please consult factory.