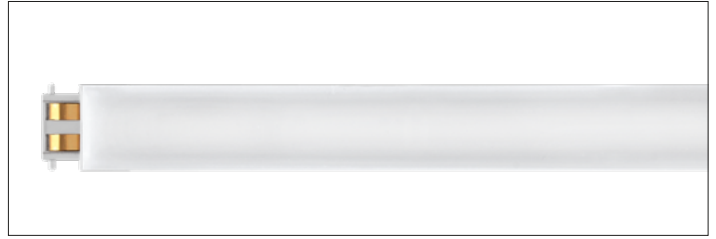
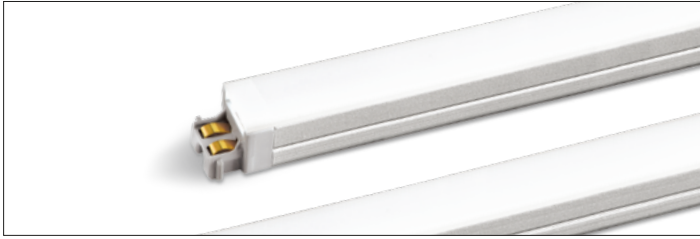


DATE **PROJECT** **LOCATION** **TYPE**



PRODUCT FEATURES

- Diode Free Illumination
- Ultra Slim Profile
- Even Surface Illumination
- Multiple Lengths for Easy Configuration
- Seamless, Snap together installations
- Dim with 0-10V, Forward/Reverse Phase
- Other Options Available
- Side-Feed Units for Long Continuous Runs
- Quick Ship Available*
- Accessories: Showcase Arm / Picture Light / Pendant

PRODUCT SPECIFICATIONS

- 24V DC Constant Voltage Feelux or Approved Class 2 Drivers
- Operating Temperature: 32-113°F (0-45°C)
- Lamp Life: 50,000 hrs L70
- Available Color: 2700K, 3000K, 3500K, 4000K
- CRI/Ra > 90
- 83.5lm/W - 3.9W/ft - 327lm/ft (NDPro 15W 4000K)
- IP20 - Damp Location/Closet Approved
- Beam Angle: 120°
- Finish: Aluminum
- 5 year Warranty
- Product is approved for Closet/Storage space installation per NEC410.16 (A) (3) and NEC410.16 (C)(5) per NRTL certification

DIMENSIONS

FLX Stix NDP .5W 1.5" (38mm)

FLX Stix NDP 1W 3.94" (100mm)

FLX Stix NDP 3W 7.6" (193mm)

FLX Stix NDP 4W 11.18" (284mm)

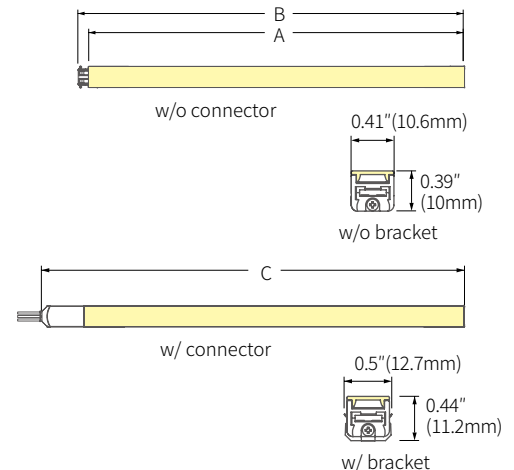
FLX Stix NDP 7W 22.24" (565mm)

FLX Stix NDP 11W 33.19" (843mm)

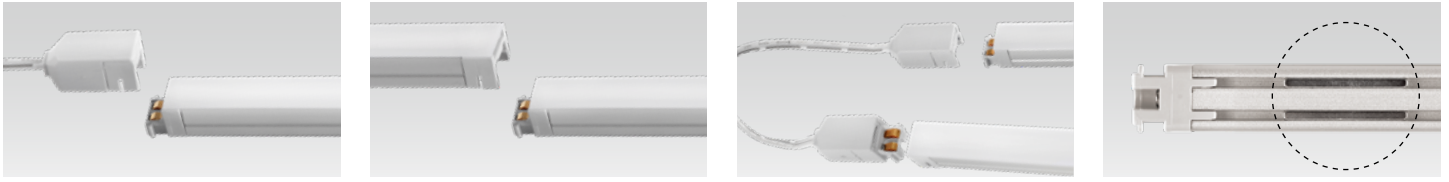
FLX Stix NDP 15W 44.17" (1,122mm)



Model Number	Voltage Input (V)	Power Input (W)	Luminous Flux (lm) / 4000K	Color Rendering	A inches (mm)	B inches (mm)	C inches (mm)
NDP1-(Color)K-24V-C90-L38	DC24	0.49	41.9	Ra>90	1.3 (33)	1.5 (38)	2.17 (55)
NDP1-(Color)K-24V-C90	DC24	1.2	93.6	Ra>90	3.74 (95)	3.93 (100)	4.6 (117)
NDP3-(Color)K-24V-C90	DC24	2.37	186.9	Ra>90	7.4 (188)	7.6 (193)	8.26 (210)
NDP4-(Color)K-24V-C90	DC24	3.59	290.3	Ra>90	10.99 (279)	11.18 (284)	11.85 (301)
NDP7-(Color)K-24V-C90	DC24	7.17	568.4	Ra>90	22 (560)	22.24 (565)	22.91 (582)
NDP11-(Color)K-24V-C90	DC24	10.62	857.5	Ra>90	33 (838)	33.18 (843)	33.85 (860)
NDP15-(Color)K-24V-C90	DC24	14.42	1,203	Ra>90	43.98 (1,117)	44.17 (1,122)	44.84 (1,139)



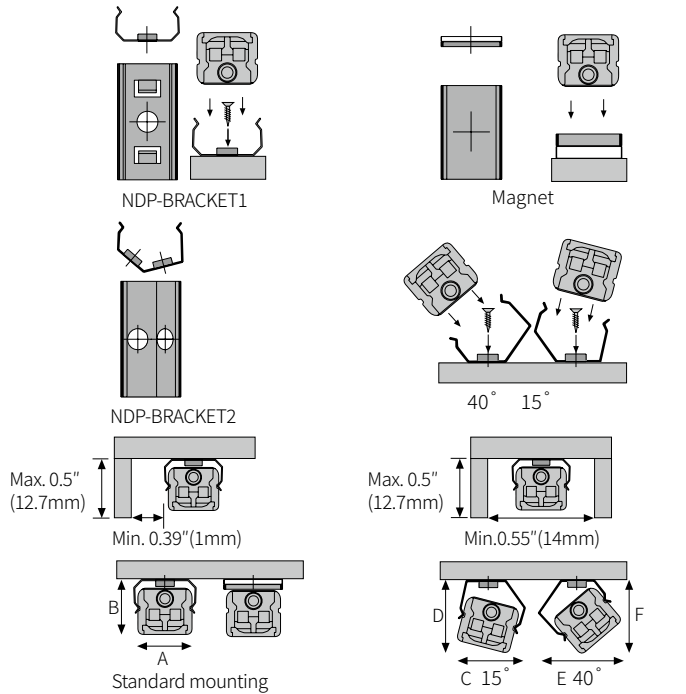
EASY CONNECTION



OPTIONS

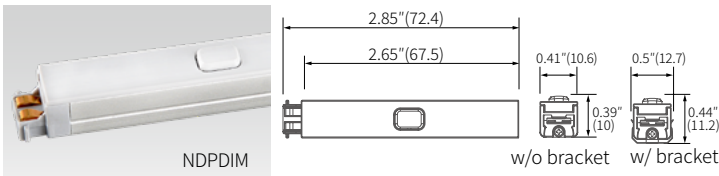


INSTALLATION



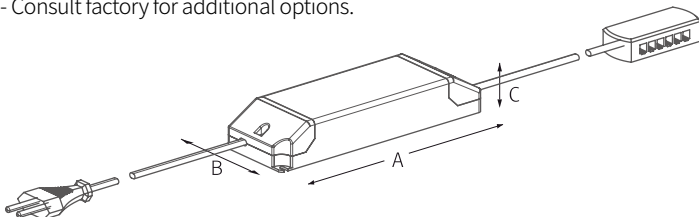
A	B	C	D	E	F
12mm(0.47")	11mm(0.43")	13.1mm(0.52")	14.3mm(0.56")	16mm(0.63")	14.6mm(0.57")

INLINE DIMMER



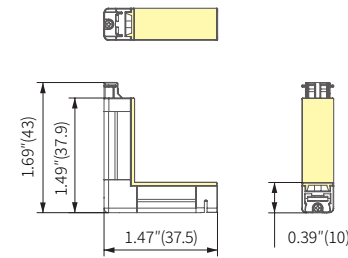
LED DRIVER OPTIONS

- Consult factory for additional options.

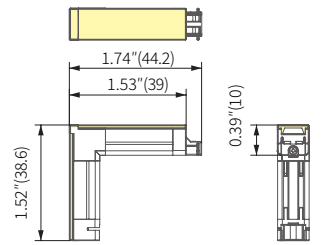


DIMENSION

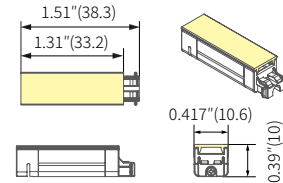
*Corner In Connector



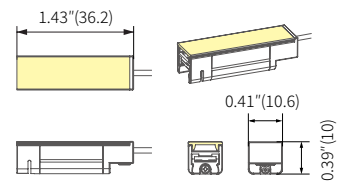
*Corner Out Connector



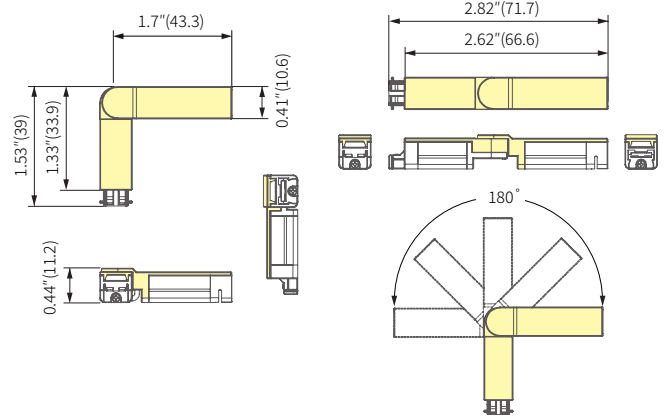
*Shortest Fixture (38mm)



*Shortest Fixture(38mm) with Power Cable



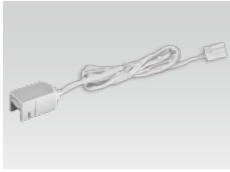
*Flexible Connector



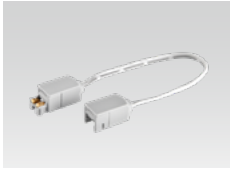
Model Name	A inches (mm)	B inches (mm)	C inches (mm)
FLC30-24V/XL *	5.9"(150)	1.6"(41)	1.22"(31)
FLC75-24V/XL *	7.08"(180)	2.36"(60)	1.25"(32)
XLD75-124V-FC *	11.22"(285)	2.94"(74.7)	1.63"(41.5)
XLD200-224V-FCL-DIM	12.28"(312)	4.46"(113.5)	2.28"(60.5)

*Requires FDC-L10 interface for 0-10V Dimming

COMPONENTS



Power cable
 __NDPPC (8')
 __NDPPC (13')



Connecting Cable
 __NDPPTC (6')
 __NDPPTC1 (1')
 __NDPPTC2 (2')
 __NDPPTC4 (4')
 __NDPPTC6 (6')



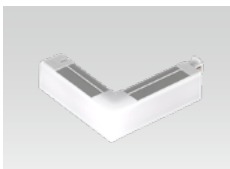
LED Power cable
 __NDP1-(color)K 24V-C90-L38P
 w/96" cable
 Lighted section is 1.4"(36mm)



Sidefeed for Seamless Extension (3W)
 __NDP3-(color)K-24V-S



Flexible Connector
 __NDP1-(color)K-24V-FLEX



Corner Out Connector
 __NDP1-(color)K-24V-C90-CO



Corner In Connector
 __NDP1-(color)K-24V-C90-CI



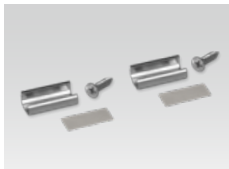
In-Line Dimmer
 __NDPDIM
 (Max 55W in a row)



Occupancy Sensor
 __NDP-OSM
 NDP Occupancy Sensor
 Inline Module



End Cap
 __NDP-CAP
 Included with fixture



Metal Mounting Brackets
 __NDV-BRACKET1
 Included with fixture



Angled Brackets
 __NDV-BRACKET2
 Angled 15°/40° (BK2)
 Optional



Connecting Brackets
 __NDV-BRACKET3
 Fixture to Fixture
 Included with fixture



Power Brackets
 __NDV-BRACKET4
 Included with NDPPC
 and NDPPTC



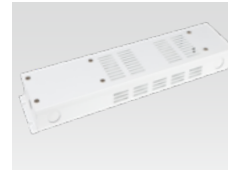
Magnet Brackets
 __NDP-BRACKET-M



12 Port Hub
 __D12P-HUB
 Included with Cord and
 Plug drivers. Order
 separately for Hard Wire or
 3rd Party Drivers



LED Drivers
 __FLC30-24V/XL (30W) *
 __FLC75-24V/XL (75W) *
 With distributor and power
 cord 1800mm (6')



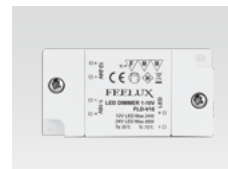
Driver Junction Box
 __MHWB-FLE



Hard Wire Driver
 __XLD200-224V-FCL-DIM
 __XLD75-124V-FC
 (90V to 300V)



Hard Wire Driver
 __FLE60-24V-L10-DIM
 __FLE90-24V-L10-DIM
**Additional Power Supply/
 Driver Options Available.
 Please consult Factory.**



Dimming Interface (0-10V)
 __FDC-L10 *
 Max. 100W (100W/CH, 1CH)
 0 -10V Signal
 *Required to Dim to Warm



Dimming Interface (DALI)
 __FDD-L1DA
 Max. 200W (100W/CH, 1CH)



**Door and motion
 sensor**
 __FLS-M24V



Occupancy sensor
 __FLS-P24V

**A Larger selection of drivers are available
 including remote and hard wire drivers.
 Please consult factory.**

SPECIFICATION GUIDE

NOT TO BE USED FOR ORDERING. The Specification Guide is intended solely to ensure that all options are considered.

MODEL	COLOR	C90	MOUNTING	CONFIGURATION	RUN LENGTH	DRIVER	CONTROLS	VOLTAGE
NDP		C90			ft.			
NDP	27K-2700K 30K-3000K 35K-3500K 40K-4000K		STD Flat Brackets Magnets Included BK2 15°/40° Brackets	S -Straight V -Varies*	RUN LENGTH IN FEET Fill out for every run section *DRAWINGS AND RUN LENGTH REQUIRED	CP - Cable/Plug HW - Hard Wire TD - 3rd Party Drivers Consult Factory	NDM Non-Dim IDM Inline Dim FDC 0-10V Interface FPH Forward Phase RPH Reverse Phase OSM Occupancy Sensor FDD DALI Interface	100V 120V 230V 277V

* Available, consult Feelux Lighting

NOTE: No Run to Exceed 55W without use of Side Feed Unit

* Consult NDP Installation instructions for more information