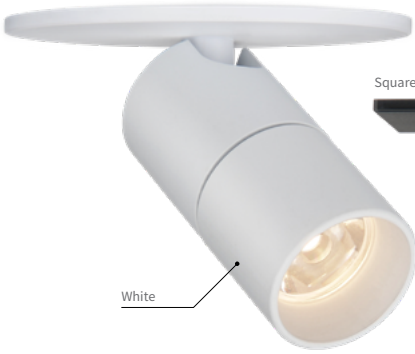


DATE	PROJECT	LOCATION	TYPE
------	---------	----------	------



Round Plate



White

Square Plate



Black



Surface mounting option with DVP surface mounting ring (DVP-MR)

PRODUCT FEATURES

- Use with constant voltage DC 24V driver
- Mini spotlight with various beam options 28°, 40°, 50°
- Dimmable with available accessories
- Available in black and white 0-10 Dimming
- Surface Type Option
- Link up to 10 units together
- Perfect for Millwork/Ceiling Applications

PRODUCT SPECIFICATIONS

Voltage	DC 24V
Wattage	2.6W
Operating Temperature Ranges	0-45°C (32-113°F)
Lamp Life	50,000hr / 70%
Available CCTs	2700K, 3000K, 3500K, 4000K
Color Rendering Index	CRI>90
Finishes	Black, White
Dimming	Forward / Reverse Phase, 0-10V (with interface)
Warranty	5 year warranty

SPECIFICATION

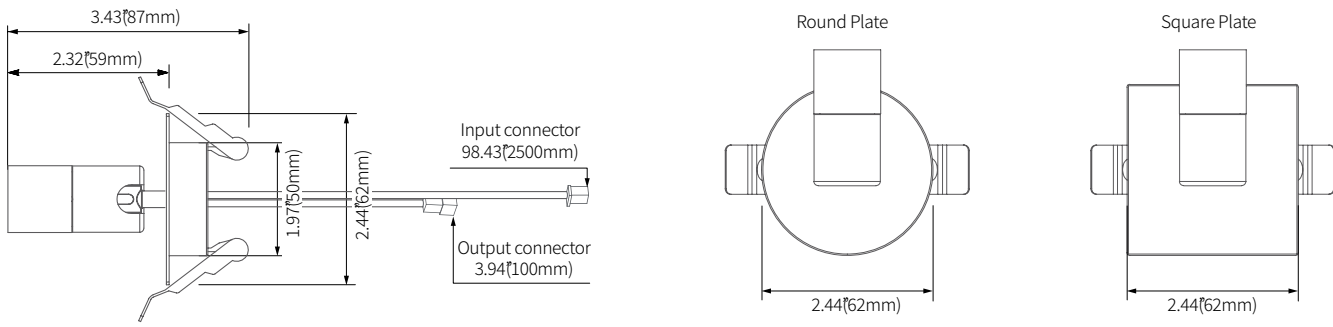
*Based on 4000K

Model Name	Power Input	Lamp Power	Luminous Flux	Luminous Efficacy	Color Rendering Index	Color Temperature	Beam Angle	Plate	Operating Temperature
DVP3 (color)K-24V-BK-28-RP	DC 24V	2.6 W	253.1 lm	97.7 lm/W	CRI > 90	2700K 3000K 3500K 4000K	28° 40° 50°	Round Square	32-113°F

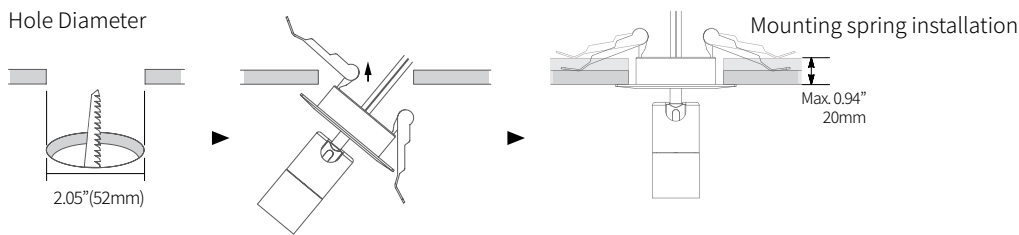
SPECIFICATION GUIDE

MODEL	COLOR	FINISH	BEAM ANGLE	TYPE	CONTROLS
DVP 3	27K -2700K 30K -3000K 35K -3500K 40K -4000K	BK - Black WT - White SV - Silver (Special Order Option) GD - Gold (Special Order Option)	28° 40° 50°	RP - Round Plate SP - Square Plate	NDM - Non-Dim FDC 0-10V Interface

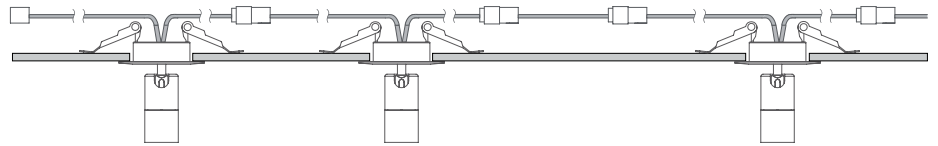
DIMENSION



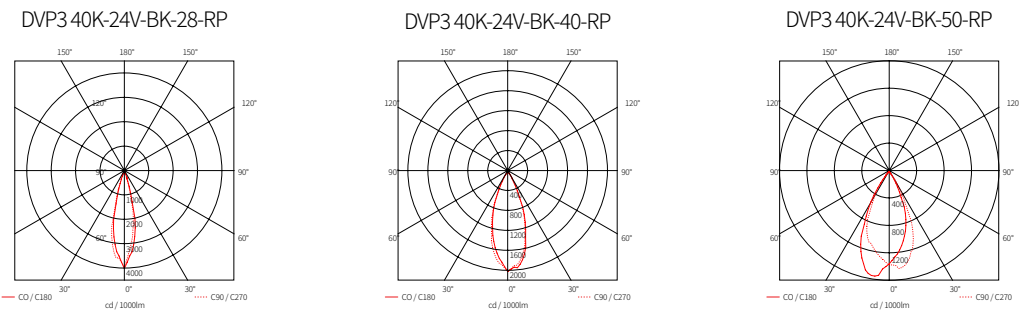
INSTALLATION



★ Linkabel between FLX Spot DVP and FLX Spot DVP (Max. 10 units connectable)



BEAM ANGEL



COMPONENTS



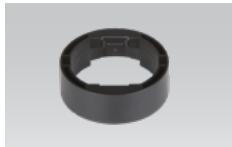
FLX Spot DVP
__DVP3-40K-24V-BK-28-RP



FLX Spot DVP
__DVP3-40K-24V-BK-28-SP



DVP-HOOD
__DVP3-HOOD-BK-28
Hood with lens for replacement



DVP surface mounting ring
__DVP-MR



Dimming Interface
__FDC-L10
Max. 100W (100W/CH, 1CH)
0-10V Signal
*Required for Dim 0-10V



Dimming Interface
__FDA-L2MO
Max. 200W (100W/CH, 2CH)
__FDA-L5M
Max. 200W (50W/CH, 5CH)



Dimming Interface (Dail)
__FDD-L1DA



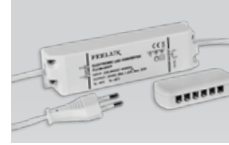
Door and motion sensor
__FLS-M24V



Occupancy sensor
__FLS-P24V



12 Port Hub
__D12P-HUB
Included with Cord and Plug drivers. Order separately for Hard Wire or 3rd Party Drivers



LED Drivers
__FLC30-24V/XL*
__FLC75-24V/XL*
with distributor and power cord (70"±1800mm)



Driver Junction Box
__MHWB-FLE



Hard Wire Driver
__XLD200-224V-FCL-DIM
__XLD75-124V-FC*
(90V to 300V)



Hard Wire Driver
__FLE60-24V-L10-DIM
__FLE90-24V-L10-DIM
Additional Power Supply/
Driver Options Available.
Please consult Factory.