

DATE	PROJECT	LOCATION	TYPE
------	---------	----------	------

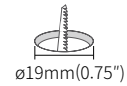


PRODUCT FEATURES

- Micro light source for Millwork, Showcase, Museum & Furniture
- Super slim design
- Rotatable head
- Constant voltage DC 24V driver
- Available in black (Special order option: gold, silver)
- Various beam angles (18°, 32°, 46°)
- Dim 0-10V

PRODUCT SPECIFICATIONS

Lamp Power	1.2W
Power Input	DC 24V
Color Rendering Index	Ra>90
Available CCTs	2700K, 3000K, 3500K, 4000K
Energy efficiency	LED 100 lm/W, Luminaire 65lm/W
Operating Temperature Ranges	0-45°C (32-113°F)
Dimming with Feelux interface	PWM/0-10V/DALI/DMX512/WIRELESS
Finish	Black (Special option: gold, silver)
Material	Aluminum
Beam Angle	18°, 32°, 46°
Lamp life	50,000hr / 70%
Warranty	5 year



SPECIFICATION

*Based on 3000K

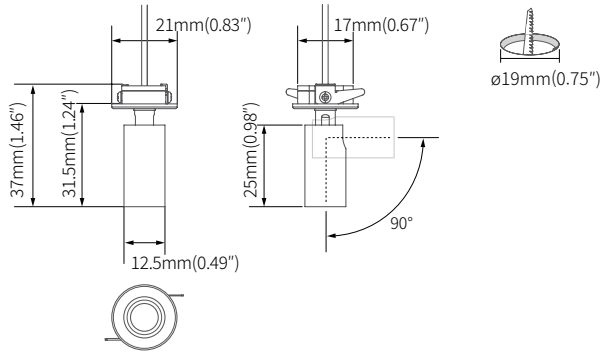
Model Number	Power Input	Lamp Power	Luminous Flux	Lumen/W	Color Rendering Index	Color Temperature	Beam Angle	Finish
MCR-PT1 (color)K-24V-46-BK	DC 24V	1.2W	79 lm	65 lm/W	CRI > 90	2700K / 3000K / 3500K / 4000K	18°, 32°, 46°	BK (Special Order Option-GD,SV)

SPECIFICATION GUIDE

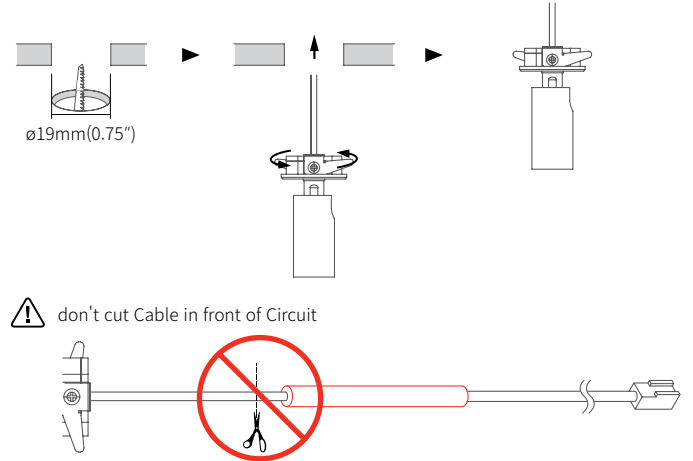
MODEL	COLOR	VOLTAGE	CRI	BEAM ANGLE	FINISH
MCR-PT1		24V	90		
MICRO POINT 1W	27K -2700K 30K -3000K 35K -3500K 40K -4000K			18° 32° 46°	BK - Black GD - Gold (Special Order Option) SV - Silver (Special Order Option)

DIMENSIONS

Micro Point

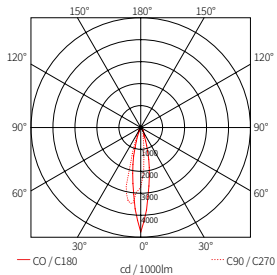


INSTALLATION

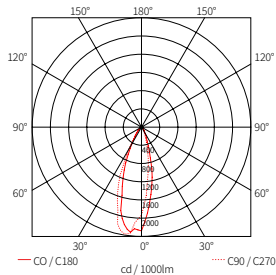


BEAM SPREADS

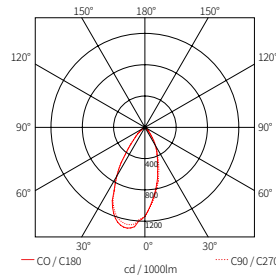
MCR-PT1 30K-24V-18-BK



MCR-PT1 30K-24V-32-BK



MCR-PT1 30K-24V-46-BK

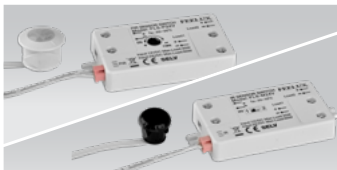


COMPONENTS



FLX Micro POINT

- ___ MCR-PT1-XXK-24V-18-BK*
- ___ MCR-PT1-XXK-24V-32-BK*
- ___ MCR-PT1-XXK-24V-46-BK*
- Other finishes available as special order



Occupancy sensor

- ___ FLS-P24V

Door and motion sensor

- ___ FLS-M24V



Dimming Interface

- ___ FDC-L10
- Max. 100W (100W/CH, 1CH) 0-10V Signal
- * Required to Dim 0-10V



Dimming Interface

- ___ FDA-L2MO (0-10V/1-10V, DMX512) Max. 200W (100W/CH, 2CH)
- ___ FDA-L5M (DMX512) Max. 200W (50W/CH, 5CH)



Dimming Interface (Dail)

- ___ FDD-L1DA
- Max. 200W (100W/CH, 1CH)



12 Port Hub

- ___ D12P-HUB
- Included with Cord and Plug drivers.
- Order separately for Hard Wire or 3rd Party Drivers



LED Drivers

- ___ FLC30-24V/XL *
- ___ FLC75-24V/XL *
- With distributor and power cord 1800mm (6')



Metal Hard Wire Box for Drivers

- ___ MHWB-FLE



Hard Wire Driver

- ___ XLD200-224V-FCL-DIM
- ___ XLD75-124V-FC *
- (90V to 300V)

Additional Power Supply / Driver Options Available. Please consult Factory.