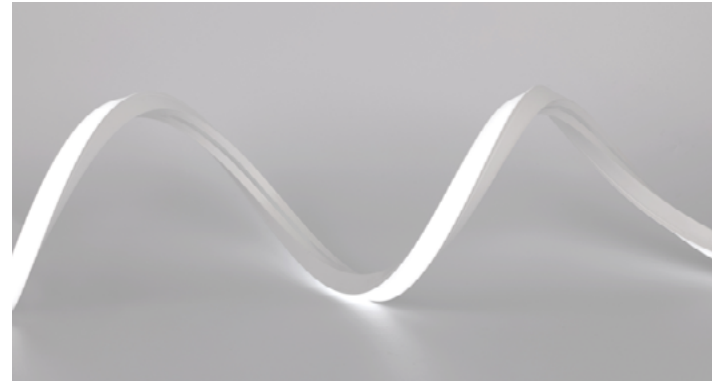
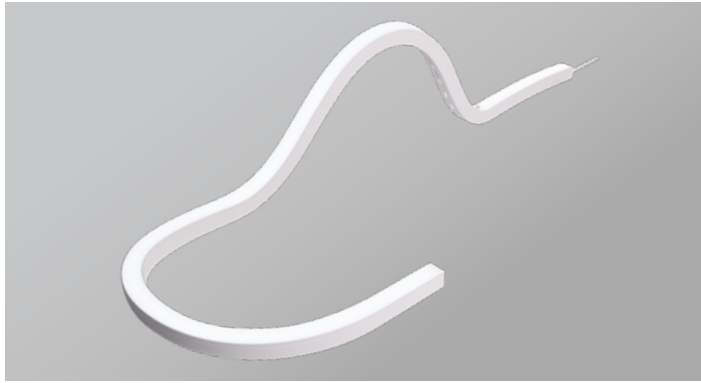


DATE PROJECT LOCATION TYPE



## PRODUCT FEATURES

- Seamless Diode Free Illumination
- Bend Direction Horizontal and Vertical
- IP67 for Interior & Exterior Applications
- Field Cut 20.83mm (0.82")
- Available in standard lengths of 1, 2, 3, 4, 5M reels
- Architectural Contour Lighting
- Straight and Side Feed Options

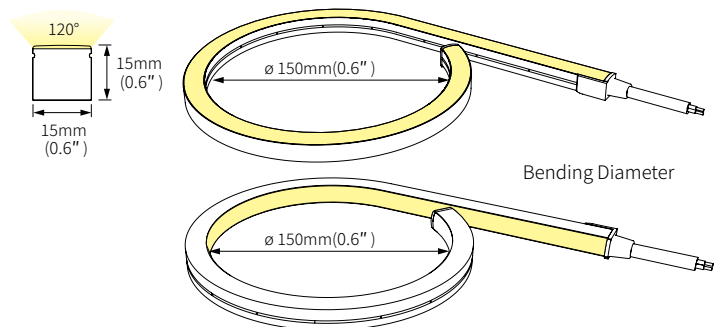
## PRODUCT SPECIFICATIONS

IP Rate	IP67
Lamp Power	14.4W/m(4.39W/ft )
Power Input	24V DC
Color Rendering	Ra>90
Operating Temperature Ranges	to 45°C (-4°F~113°F)
Maximum Length	5M(16.4')
Minimum Length-Cut point	20.83mm (0.82")
Bend Diameter	150mm (5.91")
Beam Angle	120°
Material	Silicon

## SPECIFICATIONS TABLE

Model Number	Power Input	Lamp Power	Luminous Flux (lm/ft)	Lumen/W
FN3D 22K-24V	DC 24V	14.4W/m (4.39W/ft)	285	65 lm/W
FN3D 24K-24V			285	65 lm/W
FN3D 27K-24V			285	65 lm/W
FN3D 30K-24V			285	65 lm/W
FN3D 35K-24V			305	70 lm/W
FN3D 40K-24V			305	70 lm/W

## PHYSICAL SPECIFICATIONS

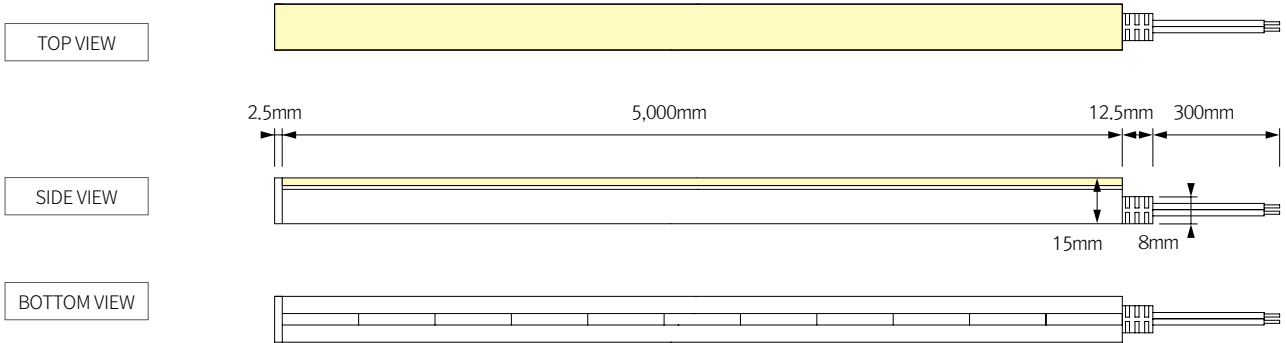


## SPECIFICATION GUIDE

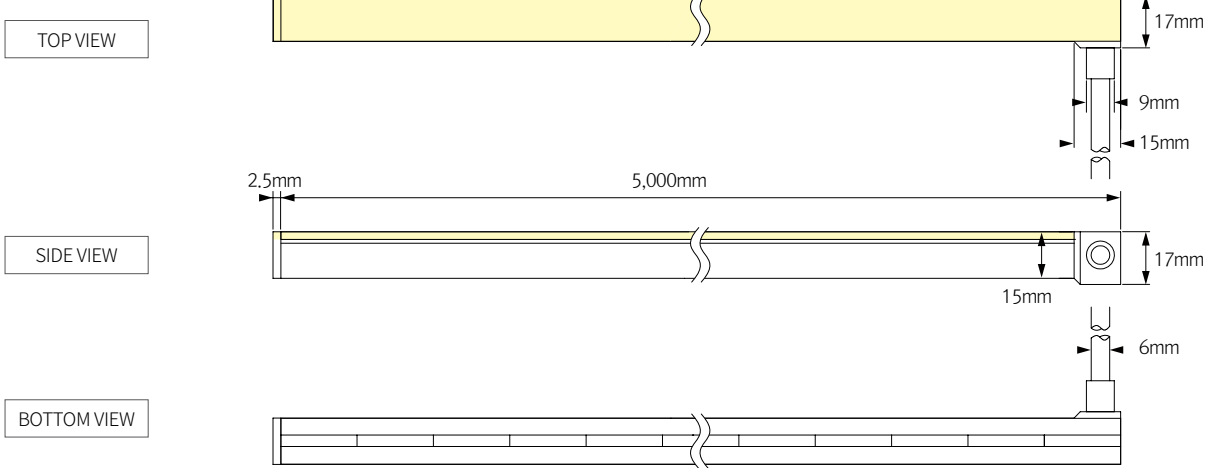
MODEL	COLOR	VOLTAGE	CRI	FEED	RUN LENGTH
FN 3D	22K -2200K 24K -2400K 27K -2700K 30K -3000K 35K -3500K 40K -4000K	24V	C90	STD - Straight Feed LS - Left Feed BS - Bottom Feed	1M -1,000mm(3.28') 2M -2,000mm(6.56') 3M -3,000mm(9.84') 4M -4,000mm(13.12') 5M -5,000mm(16.4')

## DIMENSIONS

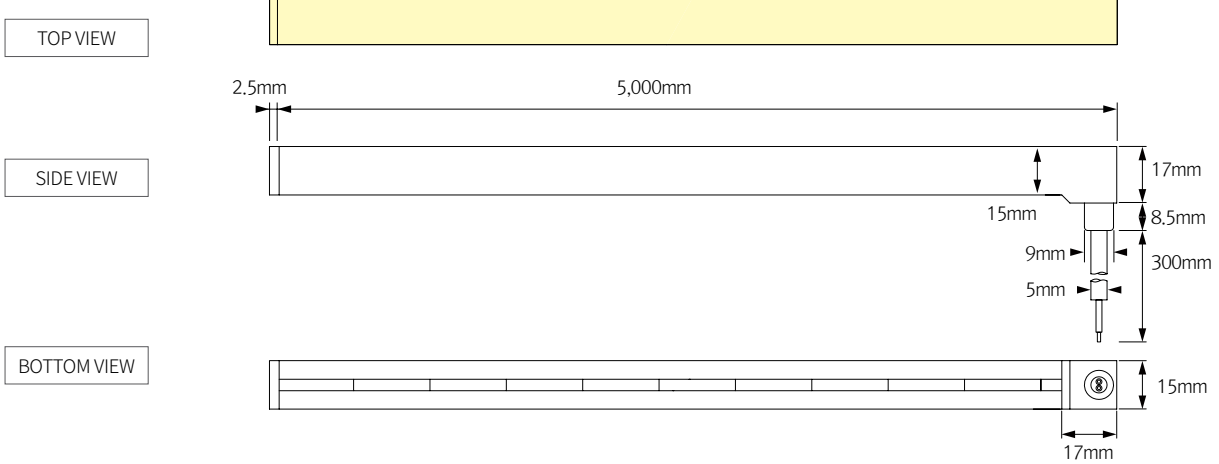
### \* Straight Feed



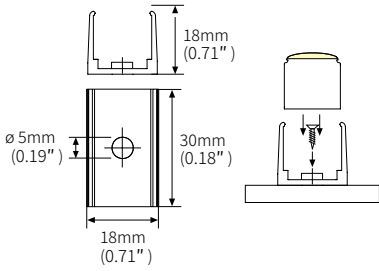
### \* Left Side Feed



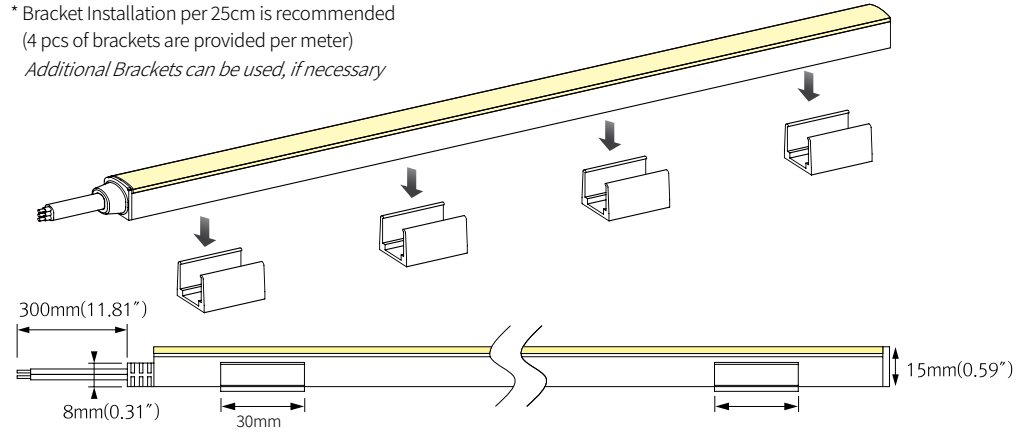
### \* Bottom feed



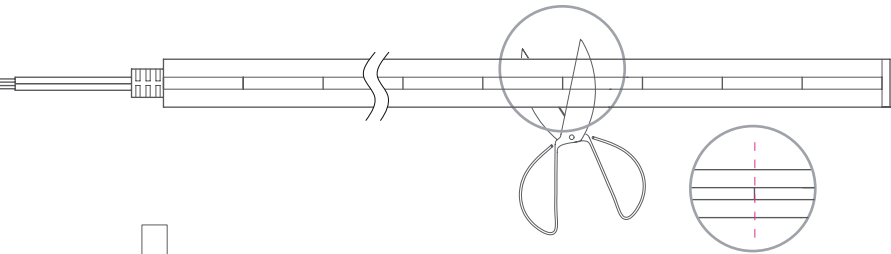
## INSTALLATION



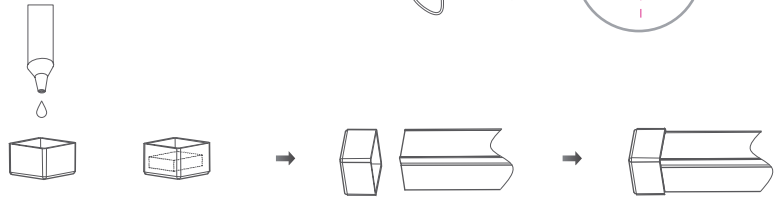
\* Bracket Installation per 25cm is recommended  
(4 pcs of brackets are provided per meter)  
*Additional Brackets can be used, if necessary*



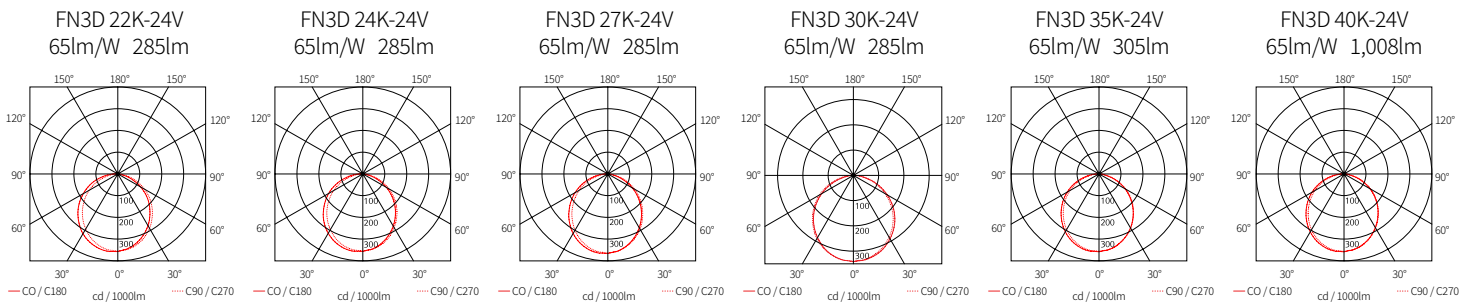
① Cutting Point: Every 20.83mm (0.82 inch)



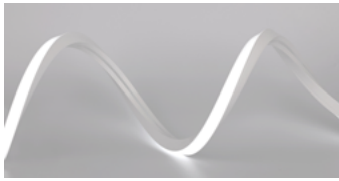
② Use Silicon Glue to Attach the End Cap



## BEAM SPREADS

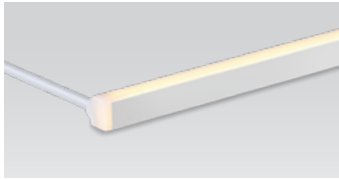


## COMPONENTS



### FLXible Neon 3D

- \_\_FN3D-(color)K-24V-C90 (1M)
- \_\_FN3D-(color)K-24V-C90 (2M)
- \_\_FN3D-(color)K-24V-C90 (3M)
- \_\_FN3D-(color)K-24V-C90 (4M)
- \_\_FN3D-(color)K-24V-C90 (5M)



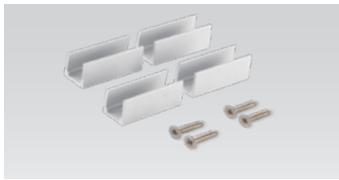
### FLXible Neon 3D Left Side Feed

- \_\_FN3D-(color)K-24V-C90-LS (1M)
- \_\_FN3D-(color)K-24V-C90-LS (2M)
- \_\_FN3D-(color)K-24V-C90-LS (3M)
- \_\_FN3D-(color)K-24V-C90-LS (4M)
- \_\_FN3D-(color)K-24V-C90-LS (5M)



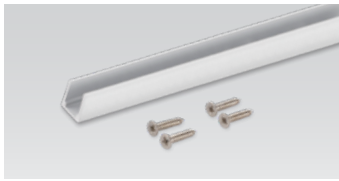
### FLXible Neon 3D Bottom Feed

- \_\_FN3D-(color)K-24V-C90-BS (1M)
- \_\_FN3D-(color)K-24V-C90-BS (2M)
- \_\_FN3D-(color)K-24V-C90-BS (3M)
- \_\_FN3D-(color)K-24V-C90-BS (4M)
- \_\_FN3D-(color)K-24V-C90-BS (5M)



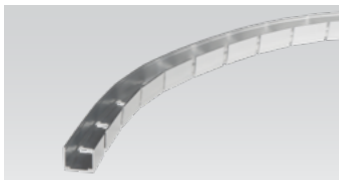
### FN3D Mounting Brackets

- \_\_FN3D-BRACKET1 (1set = 4pcs)



### FN3D Extrusion Line

- \_\_FN3D-EXL (1m)



### FN3D Flexible Extrusion Line

- \_\_FN3D-EXL-FLEX (1M)



### FN3D End Cap

- \_\_FN3D-END CAP



### Dimming Interface (0-10V)

- \_\_FDC-L10
- Max. 100W (100W/CH, 1CH) 0-10V Signal



### Dimming Interface (DALI)

- \_\_FDD-L1DA
- Max. 200W (100W/CH, 1CH)



### Dimming Interface (DMX512)

- \_\_FDA-L2MO
- (0-10V/1-10V, DMX512)
- Max. 200W (100W/CH, 2CH)
- \_\_FDA-L5M (DMX512)
- Max. 200W (50W/CH, 5CH)



### Dimming Interface (Zigbee)\_FDD-L2Z

- \_\_FDD-L2Z



### Wireless Control (Zigbee Switch)

- \_\_FSM-Z1



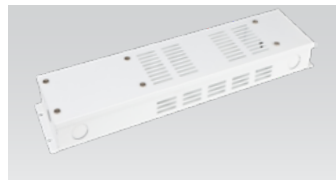
### 12 Port Hub

- \_\_D12P-HUB
- Included with Cord and Plug drivers.
- Order separately for Hard Wire or 3rd Party Drivers



### LED Drivers

- \_\_FLC30-24V/XL (30W)
- \_\_FLC75-24V/XL (75W)
- With distributor and power cord
- 1800mm (6')



### Driver Junction Box

- \_\_MHWB-FLE



### Hard Wire Driver

- \_\_XLD200-224V-FCL-DIM
- \_\_XLD75-124V-FC
- (90V to 300V)



### Hard Wire Driver

- \_\_FLE60-24V-L10-DIM
- \_\_FLE90-24V-L10-DIM
- Additional Power Supply/Driver Options Available. Please consult Factory.**

A Larger selection of drivers are available including remote and hard wire drivers. Please consult factory.