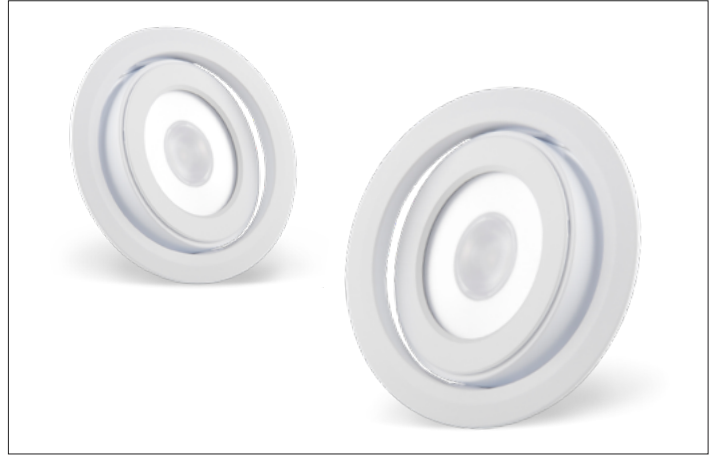


DATE PROJECT LOCATION TYPE



## PRODUCT FEATURES

- Ultra Slim Profile
- Single Diode Provides Single Crisp Image
- Linkable Units (Link up to 7 units together)
- White, Silver, and Black Trim Finishes Available
- Side Exit Leads
- Millwork, Recessed or Surface Mount
- Dim using FDC-L10
- Quick Ship\*

## PRODUCT SPECIFICATIONS

Power Input	24VDC Constant Voltage Feelux or Class 2 Drivers
Color Rendering Index	Ra>90
Available CCTs	2700K, 3000K, 3500K, 4000K, 5700K
Energy Efficiency	LED 100 lm/W, Luminaire 100lm/W
Operating Temperature Ranges	0-45°C (32-113°F)
Dim with Feelux Interface	PWM/0-10V/DALI/DMX512/WIRELESS
Material	Aluminum
Beam Angle	25°, 45°, 60°
Lamp Life	50,000hr / 70%
Warranty	5 year
Product is approved for Closet / Storage space installation per NEC410.16 (A) (3) and NEC410.16 (C)(5) per NRTL certification	

## SPECIFICATION



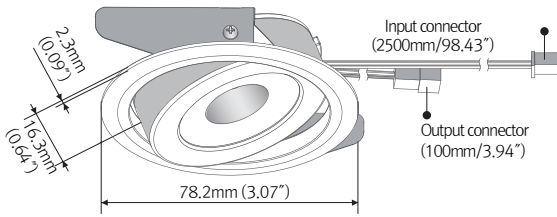
Model Name	Color	Power Input	Lamp Power	Luminous Flux	Luminous Efficacy	Color Rendering Index	CCT	Beam Angle	Operating Temperature
DVS4A 40K-24V-SW-WT-25	White Black Silver	DC 24V	4.5 W	487 lm	108 lm/w	Ra > 90	2700K/3000K/3500K/4000K	25°	0 ~ 45°C
DVS4A 40K-24V-SW-WT-45		DC 24V	4.6 W	502 lm	109 lm/w	Ra > 90	2700K/3000K/3500K/4000K	45°	0 ~ 45°C
DVS4A 40K-24V-SW-WT-60		DC 24V	4.6 W	485 lm	105 lm/w	Ra > 90	2700K/3000K/3500K/4000K	60°	0 ~ 45°C

## SPECIFICATION GUIDE

MODEL	COLOR	FINISH	BEAM ANGLE	MOUNTING	VOLTAGE
DVS4A-SW	27K -2700K 30K -3000K 35K -3500K 40K -4000K	BK - Black WT - White SV - Silver GD - Gold(Special Order Option) BZ - Bronze(Special Order Option)	25° 45° 60°	RM - Recessed Mount	120V 230V 277V

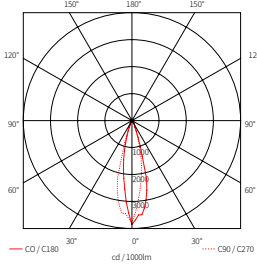
## DIMENSION

\* Type A (Linkable)

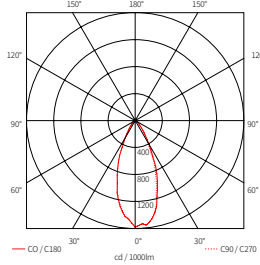


## BEAM SPREADS

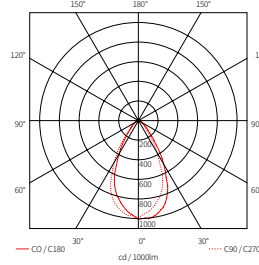
DVS4A 40K-24V-SW-25



DVS4A 40K-24V-SW-45

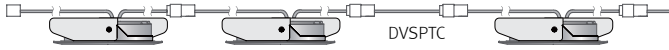


DVS4A 40K-24V-SW-60



## INSTALLATION

Linkable between FLX Spot DVS Swivel & FLX Spot DVS Swivel



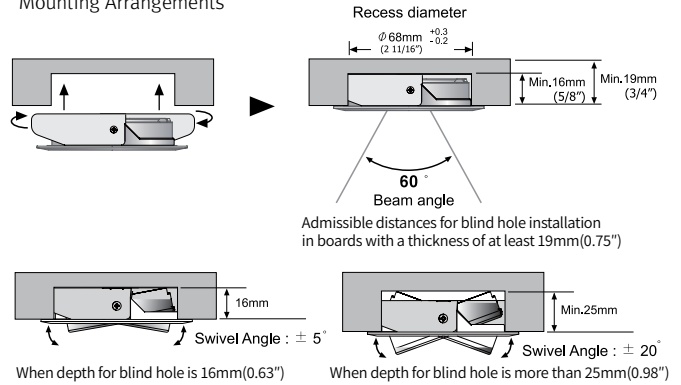
Linkable between FLX Spot DVS Swivel & NDP



Linkable between NDP & FLX Spot DVS Swivel

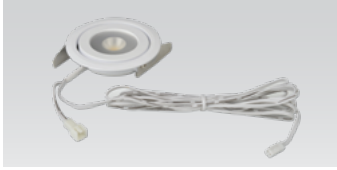


Mounting Arrangements



★ Linkabel between FLX Spot DVS and FLX Spot DVS  
(Max. 7 units connectable in a row/LED Driver)

## COMPONENTS



### FLX Spot DVS Swivel

- \_\_DVS4A 40K-24V-SW-WT
- \_\_DVS4A 40K-24V-SW-BK
- \_\_DVS4A 40K-24V-SW-SV



### Extension cable

- \_\_DVSPTC (2,500mm/98.43")



### Connecting cable

- \_\_NDPDVSPTC(1,000mm/39.37")



### Connecting cable

- \_\_NDVPC (2,500mm/98.43")



### Connecting cable

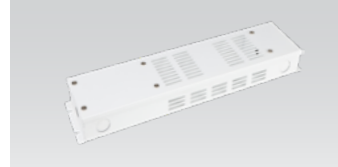
- \_\_NDPPC (2,500mm/98.43")

A larger selection of drivers are available including remote and hard wire drivers. Please consult factory.



### 12 Port Hub

- \_\_D12P-HUB
- Included with Cord and Plug drivers. Order separately for Hard Wire or 3rd Party Drivers



### Driver Junction Box

- \_\_MHWB-FLE



### LED Drivers

- \_\_FLC30-24V/XL \*
- \_\_FLC75-24V/XL \*
- With distributor and power cord 1800mm (6')



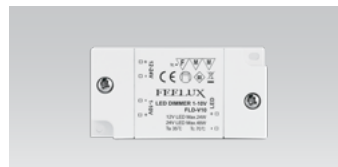
### Hard Wire Driver

- \_\_XLD200-224V-FCL-DIM
- \_\_XLD75-124V-FC (90V to 300V)



### Dimming Interface (0-10V/1-10V)

- \_\_FDD-L20



### Dimming Interface (100W/CH, 1CH) 0-10V Signal

- \_\_FDC-L10 (Max. 100W)

\*Required for Dim 0-10V, DALI



### Dimming Interface (DALI)

- \_\_FDD-L1DA



### Dimming Interface (DMX512)

- \_\_FDA-L2MO (0-10V/1-10V, DMX512) Max. 200W (100W/CH, 2CH)



### Dimming Interface (Zigbee)\_FDD-L2Z

- \_\_FDD-L2Z



### Wireless Control (Zigbee Switch)

- \_\_FSM-Z1