

TEST REPORT

1. Applicant

* Client Name :
* Address : 235-48 GWANGJEOK-RO GWANGJEOK-MYEON YANGJU-SI GYENGGI-DO 482-84
* Date of Receipt : 230608

2. Purpose of Report :

3. Number of Report : 230607

4. Test Standard / Item : / 230607 MSP3 30K 25도

5. Test Period : 230607 ~ 230608

6. Test Environment

* Ambient Temp. : 22.0 +- 3 °C
* Relative Humidity : 60.0 +- 10 % RH

7. Test Item

* Name of Product :
* Rating :
* Model :

8. Test Result : Refer to the attachment

Confirmation	Test by		Technical manager	
	PKW	Sign	PKW	Sign

- * The result shown in this test report refer only to the sample(s) tested unless otherwise stated.
- * This report cannot be reporduced, except in full.
- * This report is for reference only. It cannot replace the report by standard organization(s).

Result

Report Number	Sample Name	Sample Number	Test Standard
230607			

Test Item	Unit	Result	Notice
Beam Distribution Test		See Attachement	
ATHD	%	0.0	
CIE 1931 Cx, Cy		0.4371 , 0.4062	
Correlated Color Temperature	K	3015	
Ra		93.3	
Power Factor		1.000	
Input Voltage	V	23.981	
Input Current	A	0.117	
Input Watt	W	2.8169	
Lamp Flux	lm	236.1	
Efficient	lm/W	83.82	
luminous Intensity (Max , Center)	cd	986 , 986	
Illuminance	lx	986	1 m
		246	2 m
		110	3 m

* This test result is for the sample provided by the client.

* Sample photo

Click to load image

Luminaire KH FEELUX

Lamp

Report

230607

No. of lamps 1

Voltage (V) 23.981

Filename 230607 MSP3 30K 25도.jdt

Lamp flux (lm) 236

Current (A) 0.11746

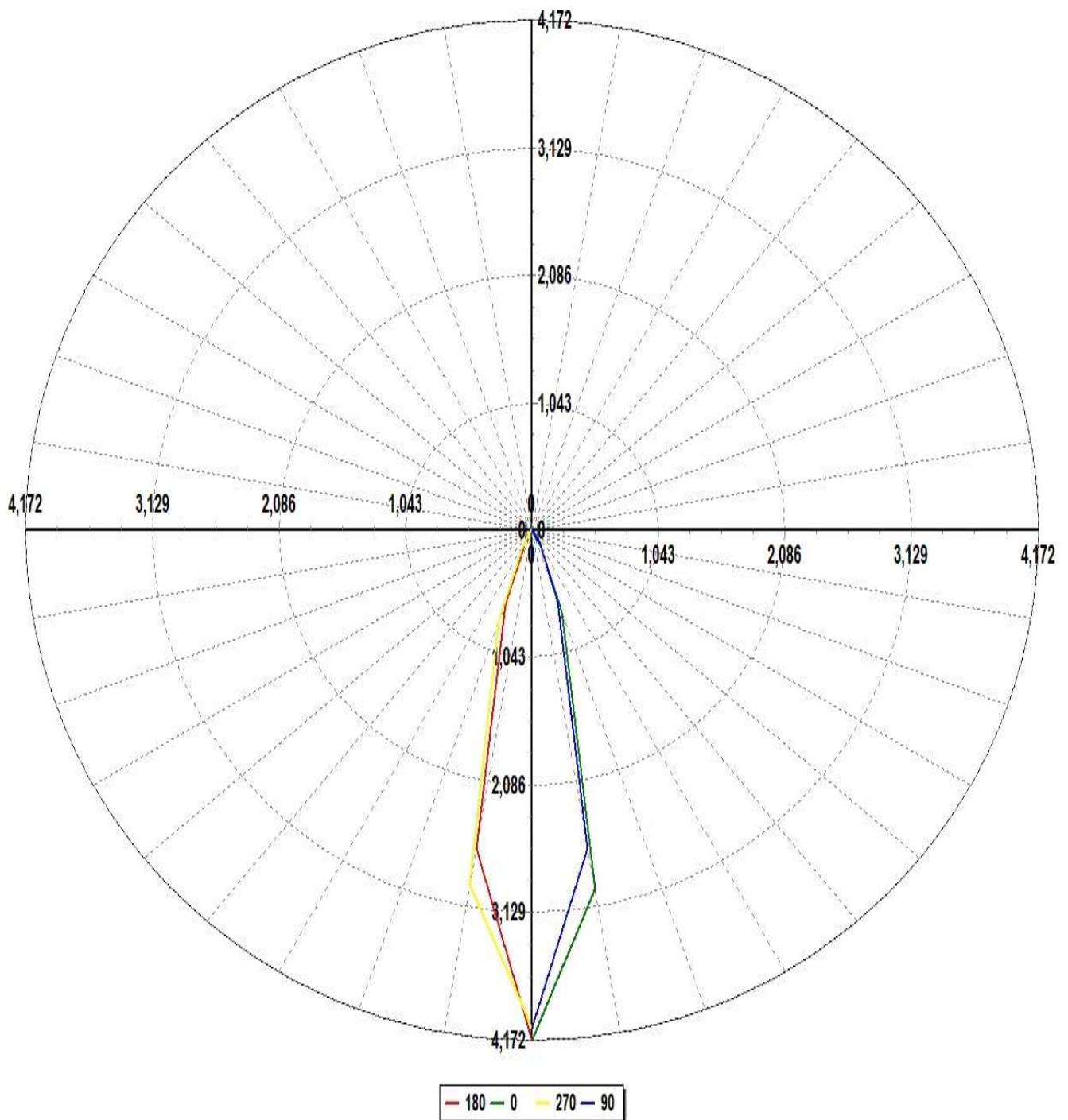
Operator

Total flux (lm) 236

Power Factor 1

Date 2023-06-07 오후 5:01:14

Luminous Intensity Distribution



Luminaire KH FEELUX

Lamp

Report

230607

No. of lamps 1

Voltage (V) 23.981

Filename 230607 MSP3 30K 25도.jdt

Lamp flux (lm) 236

Current (A) 0.11746

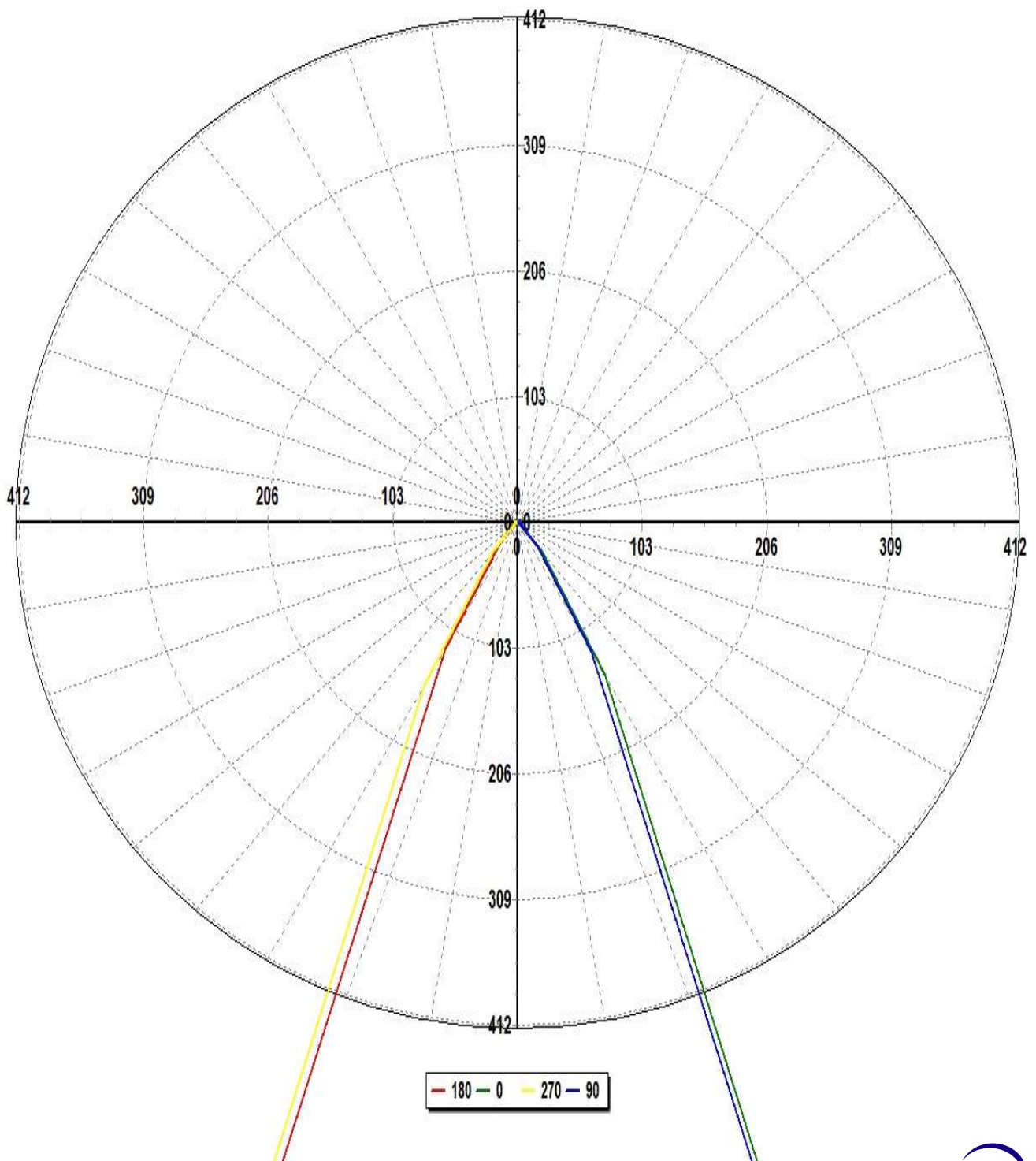
Operator

Total flux (lm) 236

Power Factor 1

Date 2023-06-07 오후 5:01:14

Luminous Intensity Distribution (Lowest 10%)



Total Optical Solution Provider

Luminaire KH FEELUX

Lamp

Report

230607

No. of lamps 1

Voltage (V) 23.981

Filename 230607 MSP3 30K 25도.jdt

Lamp flux (lm) 236

Current (A) 0.11746

Operator

Total flux (lm) 236

Power Factor 1

Date 2023-06-07 오후 5:01:14

Luminous Intensity Data

Maximum (cd) : 986

Minimum (cd) : -1

G/C	0	30	60	90	120	150	180	210	240	270	300
0	985.96	982.3	974.58	961.99	953.08	942.24	985.96	982.3	974.58	961.99	953.08
10	705.18	691.66	679.77	625.39	575.34	524.83	625.02	636.01	647.78	695.06	742.45
20	169.78	169.14	179.33	146.63	130.14	122.73	151.56	143.12	156.27	189.06	204.5
30	33.93	32.76	37.75	28.68	24.9	21.92	28.14	27.31	30.77	36.38	36.7
40	7.08	7.95	7.68	6.25	4.48	3.87	5.41	4.95	5.33	7.43	8.56
50	0.8	0.72	1.28	0.61	0.39	1.03	1.27	0.3	0.63	1.02	0.76
60	1.1	0.87	0.44	1.04	0.56	0.08	0.33	0.38	0.62	1	1.12
70	-0.27	-0.04	0.23	0.24	0.47	0.23	-0.27	0.21	0.85	0.24	0.21
80	-0.07	0.43	0.35	-0.37	-0.22	0.36	-0.12	0.44	0.07	0.12	-0.09
90	0.39	0.45	-0.1	-0.17	-0.3	-0.17	0.56	-0.5	-0.58	0.61	-0.63
100	-0.4	0.02	0.05	-0.39	0.97	-0.11	0.46	-0.05	-0.48	0.14	0
110	0.36	0.76	-0.16	0.28	0.52	0.42	0.18	0.1	-0.17	0.14	0.25
120	0.37	-0.3	-0.59	0.47	0.01	0.12	0.14	-0.31	0.05	-0.77	0.13
130	0.86	0.45	1.08	0.47	-0.3	0.49	0.72	0.43	0.94	-0.08	0.53

Luminaire KH FEELUX

Lamp

Report

230607

No. of lamps 1

Voltage (V) 23.981

Filename 230607 MSP3 30K 25도.jdt

Lamp flux (lm) 236

Current (A) 0.11746

Operator

Total flux (lm) 236

Power Factor 1

Date 2023-06-07 오후 5:01:14

Luminous Intensity Data (Continued)

Maximum (cd) : 986

Minimum (cd) : -1

G/C	330	360
0	942.24	985.96
10	790.29	705.18
20	246.19	169.78
30	48.53	33.93
40	13.2	7.08
50	1.79	0.8
60	0.9	1.1
70	-0.06	-0.27
80	0.6	-0.07
90	-0.71	0.39
100	-0.32	-0.4
110	-0.24	0.36
120	0.26	0.37
130	0.24	0.86

Luminaire KH FEELUX

Lamp

Report

230607

No. of lamps 1

Voltage (V) 23.981

Filename 230607 MSP3 30K 25도.jdt

Lamp flux (lm) 236

Current (A) 0.11746

Operator

Total flux (lm) 236

Power Factor 1

Date 2023-06-07 오후 5:01:14

Luminous Flux Table

Total Lamp Lumens: 236.14

Luminaire Efficiency (lm/W): 83.83

CIE Classification: Direct

Elevation	Lumens	Cumulative	Lamp %	Luminaire %
0	23.11	23.11	9.79	9.79
10	125.82	148.93	63.08	63.07
20	62.70	211.63	89.64	89.62
30	17.70	229.32	97.13	97.12
40	4.82	234.15	99.17	99.16
50	0.74	234.89	99.49	99.47
60	0.67	235.55	99.77	99.75
70	0.17	235.73	99.84	99.83
80	0.13	235.86	99.90	99.88
90	-0.10	235.76	99.86	99.84
100	-0.01	235.75	99.85	99.84
110	0.21	235.96	99.94	99.92
120	-0.03	235.93	99.93	99.91
130	0.21	236.14	100.02	100.00

Luminaire KH FEELUX

Lamp

Report

230607

No. of lamps 1

Voltage (V) 23.981

Filename 230607 MSP3 30K 25도.jdt

Lamp flux (lm) 236

Current (A) 0.11746

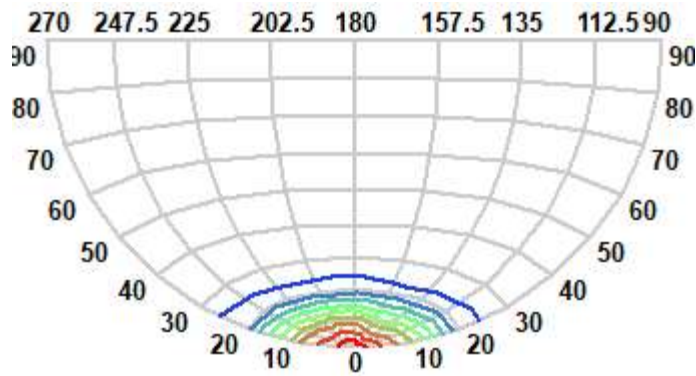
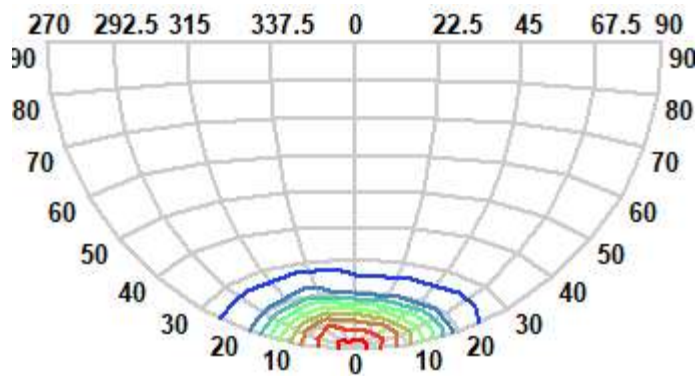
Operator

Total flux (lm) 236

Power Factor 1

Date 2023-06-07 오후 5:01:14

IsoCandela (Type C)



Luminaire KH FEELUX

Lamp

Report

230607

No. of lamps 1

Voltage (V) 23.981

Filename 230607 MSP3 30K 25도.jdt

Lamp flux (lm) 236

Current (A) 0.11746

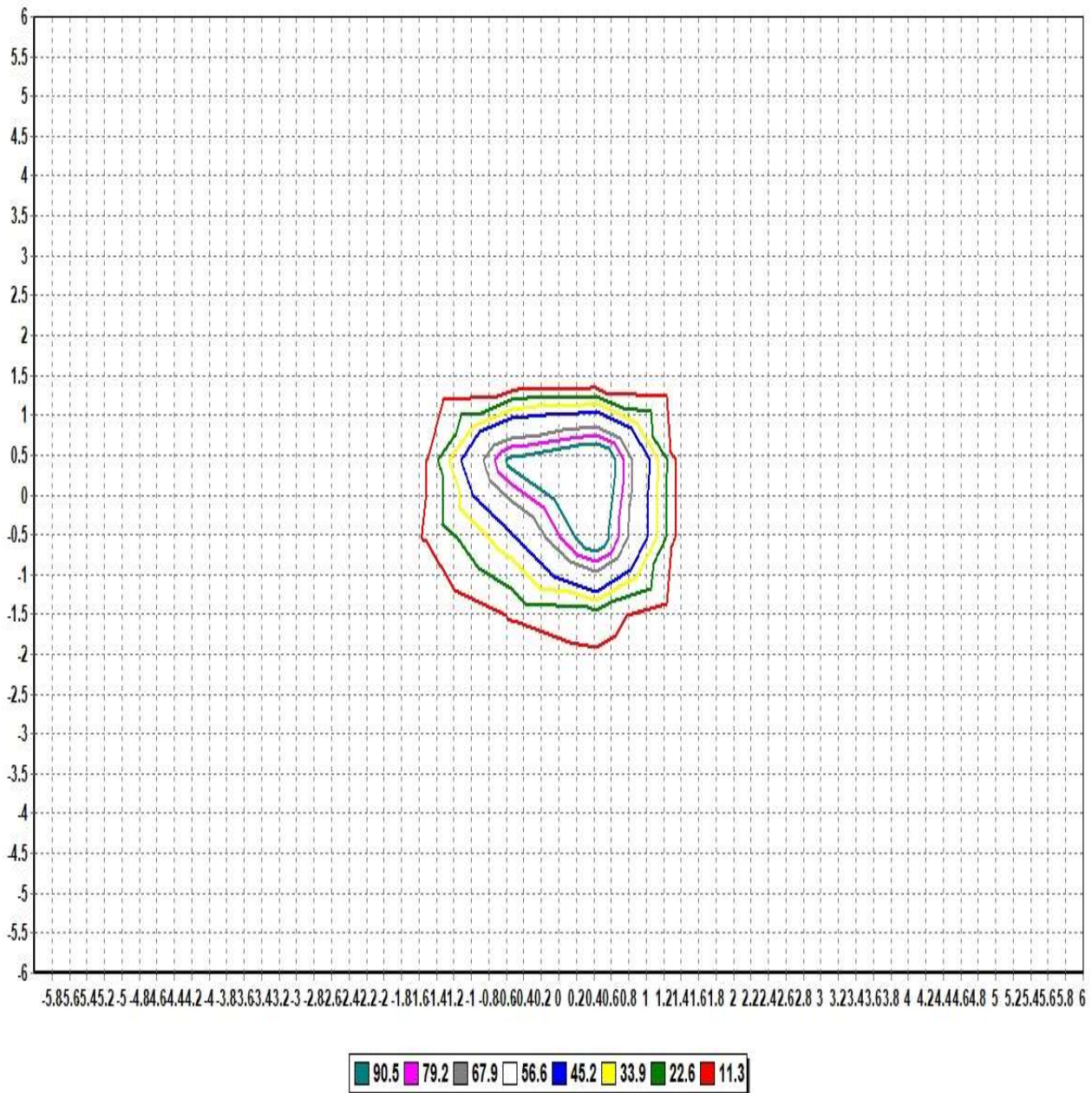
Operator

Total flux (lm) 236

Power Factor 1

Date 2023-06-07 오후 5:01:14

IsoLux Diagram (Ground)



Pole Height (m): 2.7

Area Width (m): 12

Total Optical Solution Provider

Luminaire KH FEELUX

Lamp

Report

230607

No. of lamps 1

Voltage (V) 23.981

Filename 230607 MSP3 30K 25도.jdt

Lamp flux (lm) 236

Current (A) 0.11746

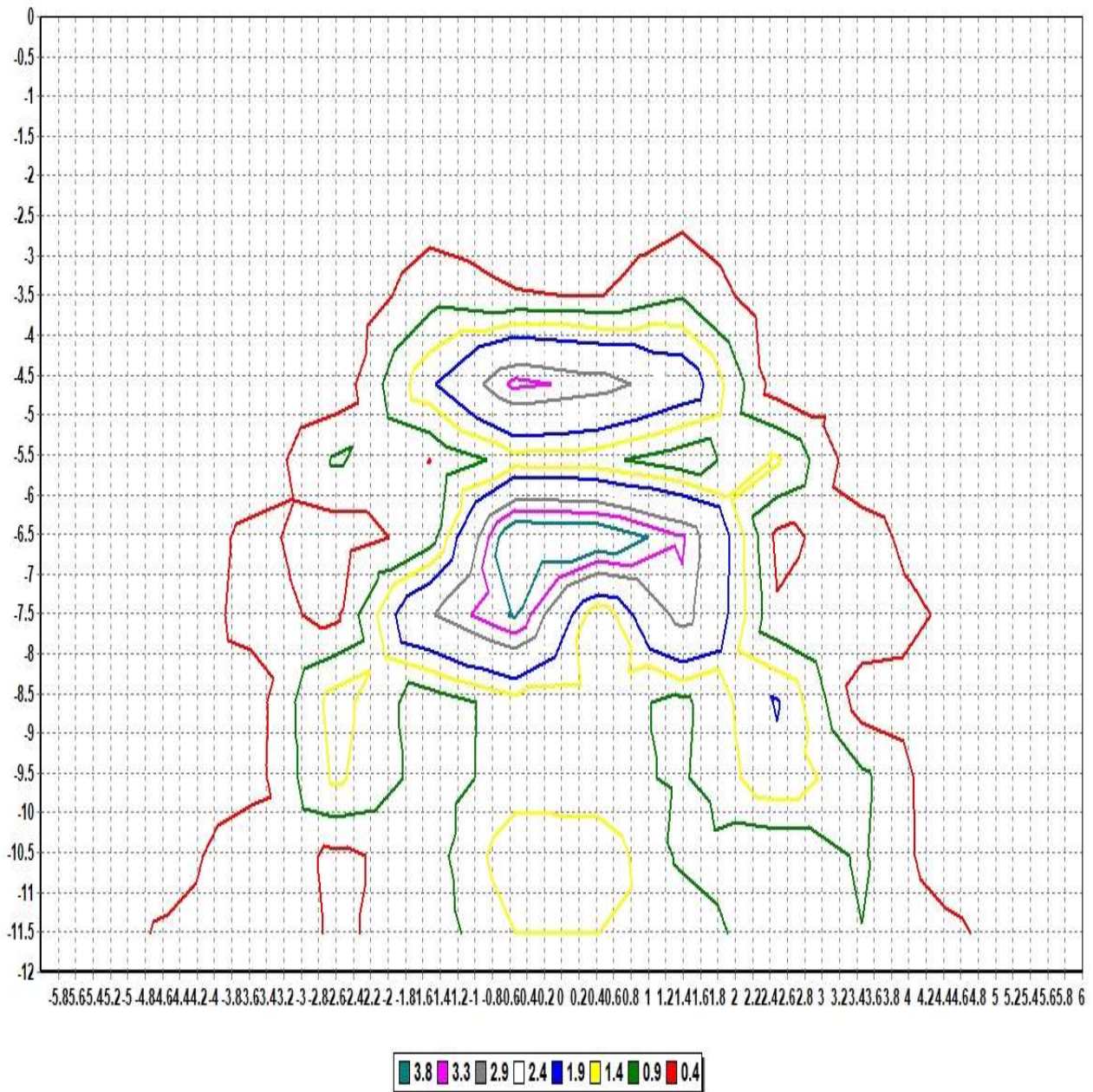
Operator

Total flux (lm) 236

Power Factor 1

Date 2023-06-07 오후 5:01:14

IsoLux Diagram (Wall)



Pole Height (m): 2.7

Wall Distance (m): 2.7

Aiming Plane: 0

Wall Height (m): 12

Total Optical Solution Provider

Luminaire KH FEELUX

Lamp

No. of lamps	1	Voltage (V)	23.981
Lamp flux (lm)	236	Current (A)	0.11746
Total flux (lm)	236	Power Factor	1

Report 230607

Filename 230607 MSP3 30K 25도.jdt

Operator

Date 2023-06-07 오후 5:01:14

Illuminance Levels (Ground)

6.00	0.00	0.00	0.00	0.00	0.00	0.00	0.01	0.00	0.00	0.00	0.00	0.00	0.00
5.00	0.00	0.00	0.00	0.01	0.01	0.01	0.01	0.01	0.01	0.00	0.00	0.00	0.00
4.00	0.00	0.00	0.01	0.01	0.01	0.02	0.02	0.02	0.02	0.02	0.01	0.00	0.00
3.00	0.00	0.00	0.01	0.02	0.13	0.03	0.07	0.05	0.17	0.02	0.01	0.00	0.00
2.00	0.00	0.01	0.01	0.09	0.10	0.34	1.00	0.56	0.15	0.15	0.02	0.01	0.00
1.00	0.00	0.01	0.01	0.03	0.32	5.06	68.99	6.24	0.55	0.04	0.02	0.02	0.00
0.00	0.00	0.02	0.02	0.09	0.95	68.97	135.25	77.81	1.17	0.08	0.02	0.01	0.00
-1.00	0.00	0.01	0.01	0.03	0.37	5.33	76.77	7.08	0.64	0.06	0.02	0.02	0.00
-2.00	0.00	0.01	0.01	0.12	0.11	0.37	1.24	0.59	0.16	0.27	0.02	0.01	0.00
-3.00	0.00	0.00	0.01	0.01	0.11	0.02	0.09	0.05	0.16	0.02	0.02	0.00	0.00
-4.00	0.00	0.00	0.01	0.01	0.01	0.02	0.02	0.02	0.02	0.01	0.01	0.00	0.00
-5.00	0.00	0.00	0.01	0.01	0.01	0.01	0.01	0.01	0.01	0.01	0.00	0.00	0.00
-6.00	0.00	0.00	0.00	0.00	0.00	0.01	0.01	0.01	0.00	0.00	0.00	0.00	0.00
-6.00	-5.00	-4.00	-3.00	-2.00	-1.00	0.00	1.00	2.00	3.00	4.00	5.00	6.00	

Illum. (Max.) : 135.25

Illum. (Min.) : -0.0011

Illum. (Avg.) : 2.7391

All illuminance level values are in lux.



Luminaire KH FEELUX

Lamp

Report

230607

No. of lamps 1

Voltage (V) 23.981

Filename 230607 MSP3 30K 25도.jdt

Lamp flux (lm) 236

Current (A) 0.11746

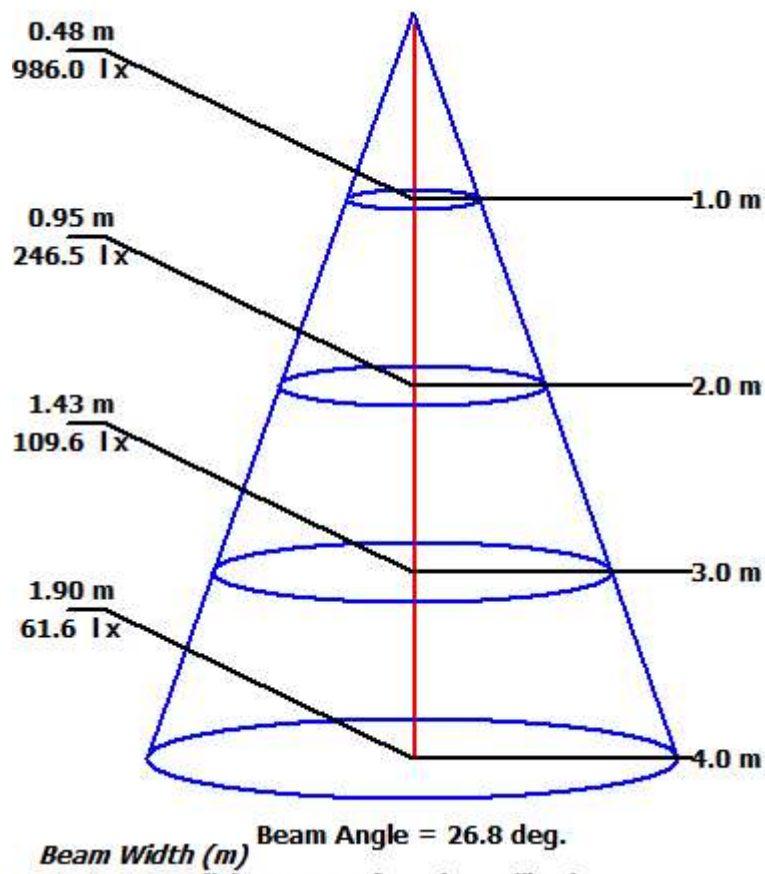
Operator

Total flux (lm) 236

Power Factor 1

Date 2023-06-07 오후 5:01:14

Illuminance Cone Diagram



Luminaire KH FEELUX

Lamp

Report 230607

No. of lamps 1 Voltage (V) 23.981

Filename 230607 MSP3 30K 25도.jdt

Lamp flux (lm) 236 Current (A) 0.11746

Operator

Total flux (lm) 236 Power Factor 1

Date 2023-06-07 오후 5:01:14

Coefficient of Utilization

	Refl. Ceiling (%)	80%	80%	80%	70%	70%	70%	50%	50%	50%	30%	30%	30%	10%	10%	10%	0%
	Refl. Wall (%)	50%	30%	10%	50%	30%	10%	50%	30%	10%	50%	30%	10%	50%	30%	10%	0%
Eff. Floor Cavity Refl.		20%	20%	20%	20%	20%	20%	20%	20%	20%	20%	20%	20%	20%	20%	20%	20%
Room CR 0		0.00	0.00	0.00	0.00	0.00	0.00	0.00	0.00	0.00	0.00	0.00	0.00	0.00	0.00	0.00	0.00
Room CR 1		0.00	0.00	0.00	0.00	0.00	0.00	0.00	0.00	0.00	0.00	0.00	0.00	0.00	0.00	0.00	0.00
Room CR 2		0.00	0.00	0.00	0.00	0.00	0.00	0.00	0.00	0.00	0.00	0.00	0.00	0.00	0.00	0.00	0.00
Room CR 3		0.00	0.00	0.00	0.00	0.00	0.00	0.00	0.00	0.00	0.00	0.00	0.00	0.00	0.00	0.00	0.00
Room CR 4		0.00	0.00	0.00	0.00	0.00	0.00	0.00	0.00	0.00	0.00	0.00	0.00	0.00	0.00	0.00	0.00
Room CR 5		0.00	0.00	0.00	0.00	0.00	0.00	0.00	0.00	0.00	0.00	0.00	0.00	0.00	0.00	0.00	0.00
Room CR 6		0.00	0.00	0.00	0.00	0.00	0.00	0.00	0.00	0.00	0.00	0.00	0.00	0.00	0.00	0.00	0.00
Room CR 7		0.00	0.00	0.00	0.00	0.00	0.00	0.00	0.00	0.00	0.00	0.00	0.00	0.00	0.00	0.00	0.00
Room CR 8		0.00	0.00	0.00	0.00	0.00	0.00	0.00	0.00	0.00	0.00	0.00	0.00	0.00	0.00	0.00	0.00
Room CR 9		0.00	0.00	0.00	0.00	0.00	0.00	0.00	0.00	0.00	0.00	0.00	0.00	0.00	0.00	0.00	0.00
Room CR 10		0.00	0.00	0.00	0.00	0.00	0.00	0.00	0.00	0.00	0.00	0.00	0.00	0.00	0.00	0.00	0.00