

FEELUX

MonoRail

The ultimate solution for extending long run lengths in low voltage systems

Display & Cove System for long runs !





Product Features

- Super Slim Liner with power track
- Greatly extends the length of a run with a single power point
- Fixtures snaps onto power track with no breaks in light output
- To be used with constant voltage DC 24V driver
- Dimmable with available accessories

Specification

- Voltage : DC 24V
- Operating temperature : 32~113F(0~45° C)
- Lamp life : 40,000hr / 70%
- Available color : 2700K, 3000K, 3500K, 4000K, 6000K
- Color rendering : Ra > 85
- Energy efficiency : 75lm/W
- Degree of protection : IP20





MonoRail

Display & Cove System for Long runs!



MonoRail 1W (3 ⁴⁷/₆₄ ")



MonoRail 4W (11 ¹⁷/₆₄ ")

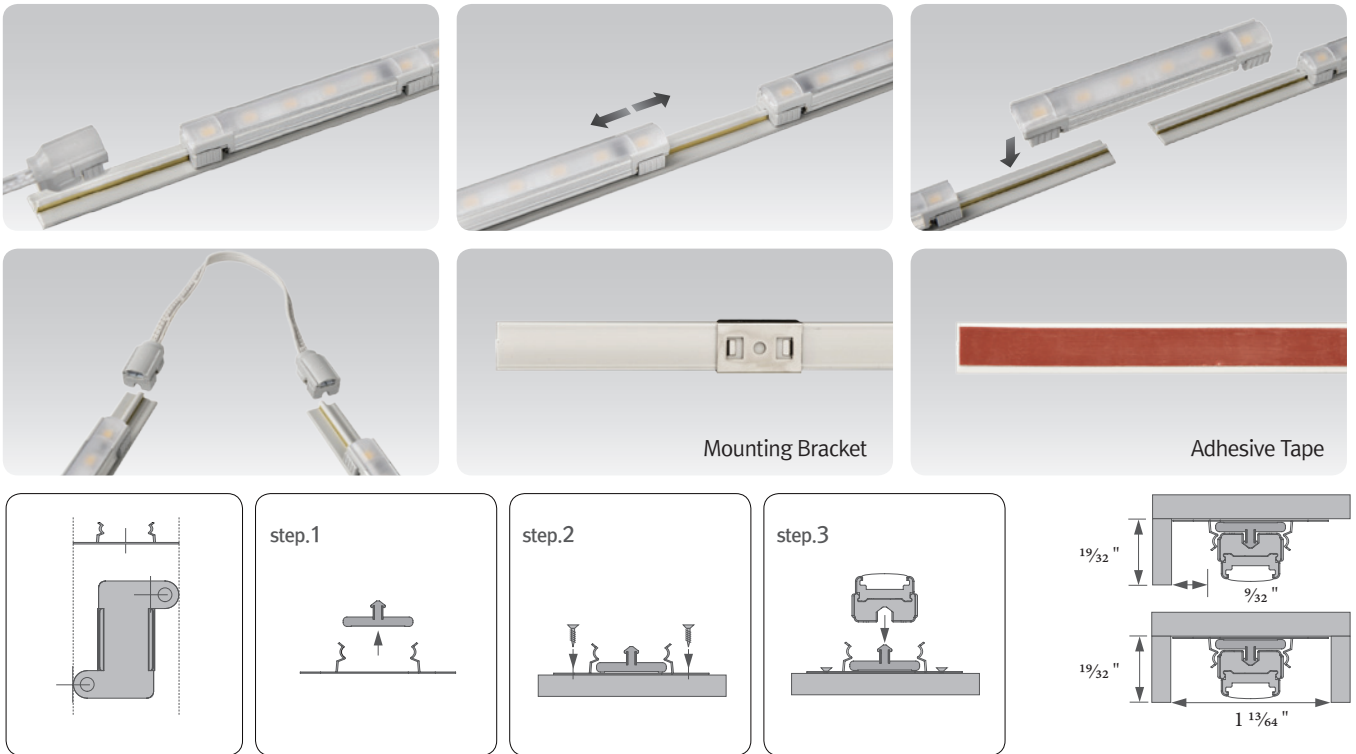


MonoRail 8W (22 ³³/₆₄ ")



Power Rail (power supply track)

Easy connection



Power Rail – supply power to other electrics

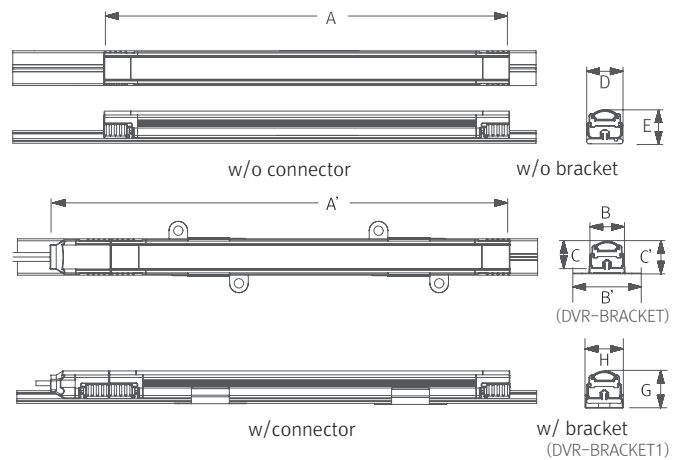


Max. connection

– Power rail : 180W in one row (Single powerfeed)- LED Driver

LED Driver Model Name	Max. units for LED Driver	
	24V/75W	24V/180W
DVR1-[Color]K-24V	57	138
DVR4-[Color]K-24V	18	45
DVR8-[Color]K-24V	9	22

Dimension



Model Name	Power Input (V)	Lamp Power (W)	A (in)	A' (in)	B (in)	B' (in)	C (in)	C' (in)	D (in)	E (in)	G (in)	H (in)
DVR1-[Color]K-24V	DC 24	1.3	3 ⁴⁷ / ₆₄	4 ⁴⁹ / ₆₄	3 ⁹ / ₆₄	1 ¹³ / ₆₄	3 ¹ / ₆₄	1 ⁹ / ₃₂	3 ⁹ / ₆₄	3 ⁷ / ₆₄	4 ³ / ₆₄	2 ¹ / ₃₂
DVR4-[Color]K-24V	DC 24	4	11 ¹⁷ / ₆₄	12 ⁹ / ₃₂	3 ⁹ / ₆₄	1 ¹³ / ₆₄	3 ¹ / ₆₄	1 ⁹ / ₃₂	3 ⁹ / ₆₄	3 ⁷ / ₆₄	4 ³ / ₆₄	2 ¹ / ₃₂
DVR8-[Color]K-24V	DC 24	8	22 ³³ / ₆₄	23 ³⁵ / ₆₄	3 ⁹ / ₆₄	1 ¹³ / ₆₄	3 ¹ / ₆₄	1 ⁹ / ₃₂	3 ⁹ / ₆₄	3 ⁷ / ₆₄	4 ³ / ₆₄	2 ¹ / ₃₂

Model Name	Power Input (V)	Lamp Power (W)	A (mm)	A' (mm)	B (mm)	B' (mm)	C (mm)	C' (mm)	D (mm)	E (mm)	G (mm)	H (mm)
DVR1-[Color]K-24V	DC 24	1.3	95	121	15.3	30.6	12.3	14.9	15.6	14.6	17	16.6
DVR4-[Color]K-24V	DC 24	4	286	312	15.3	30.6	12.3	14.9	15.6	14.6	17	16.6
DVR8-[Color]K-24V	DC 24	8	572	598	15.3	30.6	12.3	14.9	15.6	14.6	17	16.6

Accessories



a MonoRail

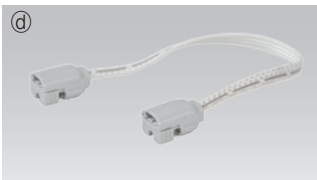
DVR1-[Color]K-24V 1W (3 47/64 ")	DVR4-[Color]K-24V 4W (11 17/64 ")	DVR8-[Color]K-24V 8W (22 33/64 ")
-------------------------------------	--------------------------------------	--------------------------------------



b PowerRail : DVR-Rail

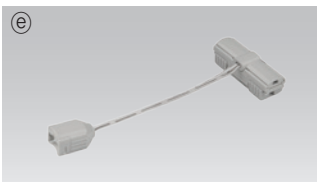


c Power supply cable to the Rail ; DVRPC (98 27/64")



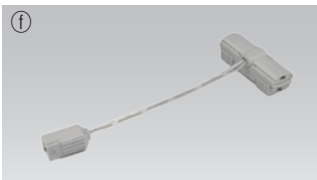
d Connecting cable between rails

DVRPTC	DVRPTC1	DVRPTC2	DVRPTC4	DVRPTC6
5 29/32"	11 13/16"	23 5/8"	47 1/4"	70 55/64"



e Connecting cable between Rail and Diva2 : DVRPTC-NDV

DVRPTC-NDV1	DVRPTC-NDV2
11 13/16"	23 5/8"



f Connecting cable between Rail and Diva2 HO&Dual : DVRPTC-HDV

DVRPTC-HDV1	DVRPTC-HDV2
11 13/16"	23 5/8"



g Connecting cable between Rail and Diva2 SPOT : DVRPTC-DVS

DVRPTC-DVS1	DVRPTC-DVS2
11 13/16"	23 5/8"

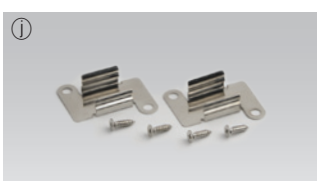


h Sidefeed for seamless extension(1W) : DVR1-[Color]K-24V-S



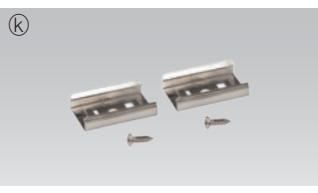
i LED Driver with 6way distributor, with power cord(23 5/8")

Part No	FLC15-24V/XL	FLC30-24V/XL	FLC75-24V/XL
Capacity	15W 24V	30W 24V	75W 24V



j Rail bracket : DVR-BRACKET

Standard MonoRail Bracket



Ⓚ Rail bracket : DVR-BRACKET1
Optional MonoRail Bracket



Ⓛ End cap : DVR-END-CAP

