

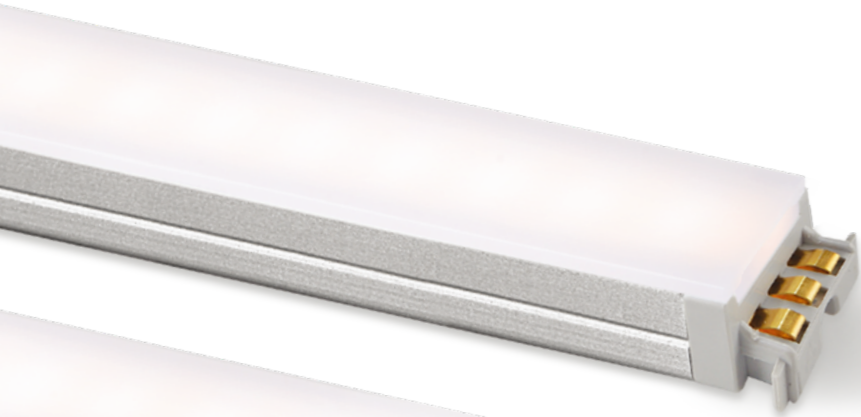
**FLX Stix DDPPro**

LED for Display, Cabinet, Furniture &amp; Cove

## Dynamic LED



- Super slim linear LED with spot free high output
- Quick connection system
- Perfected with color consistency
- No dark spot at the linkage point for continuous seamless effect
- Various mounting methods including magnetic
- Dimmable with available accessories





**FLX Stix DDPro**  
High Output Dynamic LED



DDP3 / FLX Stix DDPro 3W Length (145mm)



DDP6 / FLX Stix DDPro 6W Length (285mm)



DDP12 / FLX Stix DDPro 12W Length (564mm)



DDP18 / FLX Stix DDPro 18W Length (843mm)

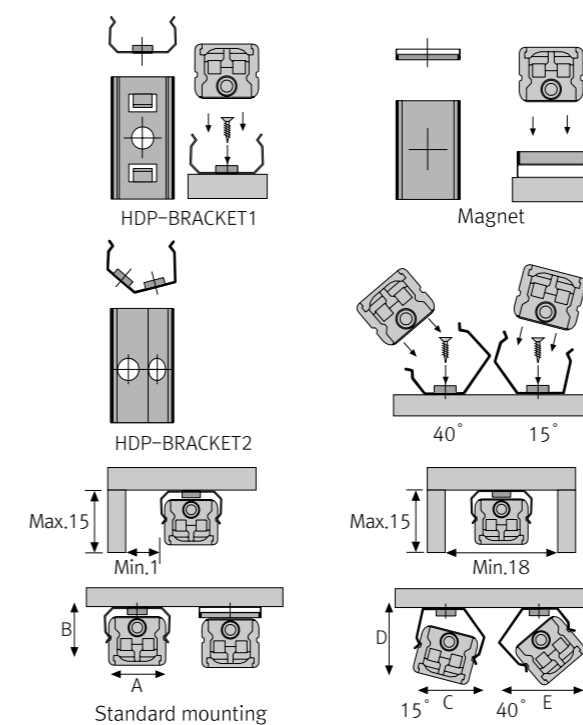


DDP24 / FLX Stix DDPro 24W Length (1,122mm)

**Various options**



**Installation**



**Max. connection**

- 75W in one row (single power feed)
- LED Driver

| LED Driver<br>Model Name | Max. units for LED Driver |         |          |
|--------------------------|---------------------------|---------|----------|
|                          | 24V/30W                   | 24V/75W | 24V/200W |
| DDP3 SC-24V-C90          | 10                        | 25      | 71       |
| DDP6 SC-24V-C90          | 5                         | 12      | 34       |
| DDP12 SC-24V-C90         | 2                         | 6       | 17       |
| DDP18 SC-24V-C90         | 1                         | 4       | 11       |
| DDP24 SC-24V-C90         | 1                         | 4       | 8        |

- W/ Bracket

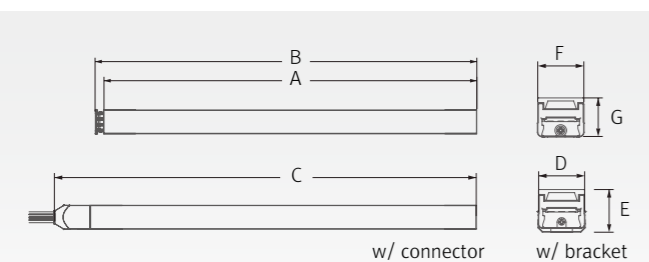
|           | A(mm) | B(mm) | C(mm) | D(mm) | E(mm) | F(mm) |
|-----------|-------|-------|-------|-------|-------|-------|
| Flat type | 16    | 14    | 18.3  | 18    | 21    | 19.6  |

**Specification**

| Model Name       | Power Input | Lamp Power | Lumens   | Efficiency | Color Rendering | Available Color | Operating Temperature |
|------------------|-------------|------------|----------|------------|-----------------|-----------------|-----------------------|
| DDP3 SC-24V-C90  | DC 24V      | 2.9 W      | 182 lm   | 63 lm/W    | Ra > 90         | 2,200K - 4,000K | 0 ~ 45°C              |
| DDP6 SC-24V-C90  | DC 24V      | 5.7 W      | 366 lm   | 64 lm/W    | Ra > 90         | 2,200K - 4,000K | 0 ~ 45°C              |
| DDP12 SC-24V-C90 | DC 24V      | 11.5 W     | 753 lm   | 65 lm/W    | Ra > 90         | 2,200K - 4,000K | 0 ~ 45°C              |
| DDP18 SC-24V-C90 | DC 24V      | 17.5 W     | 1,150 lm | 67 lm/W    | Ra > 90         | 2,200K - 4,000K | 0 ~ 45°C              |
| DDP24 SC-24V-C90 | DC 24V      | 22.8 W     | 1,505 lm | 66 lm/W    | Ra > 90         | 2,200K - 4,000K | 0 ~ 45°C              |

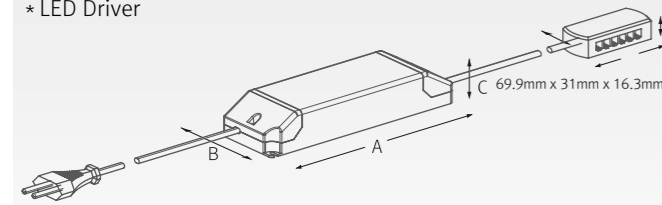
**Dimension**

| Model Name      | Power Input (V) | Lamp Power (W) | A (mm) | B (mm) | C (mm) | D (mm) | E (mm) | F (mm) | G (mm) |
|-----------------|-----------------|----------------|--------|--------|--------|--------|--------|--------|--------|
| DDP3SC-24V-C90  | DC 24           | 2.9            | 140    | 145    | 163    | 16     | 138    | 15     | 12.6   |
| DDP6SC-24V-C90  | DC 24           | 5.7            | 280    | 285    | 303    | 16     | 138    | 15     | 12.6   |
| DDP12SC-24V-C90 | DC 24           | 11.5           | 559    | 564    | 582    | 16     | 138    | 15     | 12.6   |
| DDP18SC-24V-C90 | DC 24           | 17.5           | 838    | 843    | 861    | 16     | 138    | 15     | 12.6   |
| DDP24SC-24V-C90 | DC 24           | 22.8           | 1,117  | 1,122  | 1,141  | 16     | 138    | 15     | 12.6   |

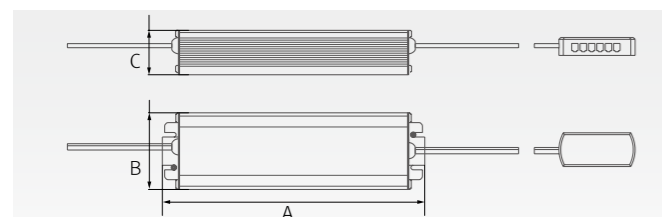


| Model Name    | A (mm) | B (mm) | C (mm) |
|---------------|--------|--------|--------|
| FLC30-24V/T   | 150    | 41     | 31     |
| FLC75-24V-P/T | 180    | 60     | 32     |

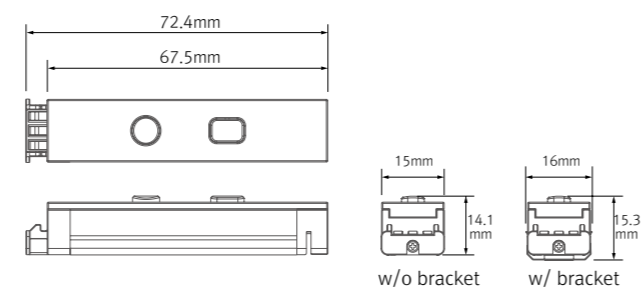
**\* LED Driver**



| Model Name   | A (mm) | B (mm) | C (mm) |
|--------------|--------|--------|--------|
| FLC200-24V/T | 228    | 68     | 39     |



**\* Inline dimmer**

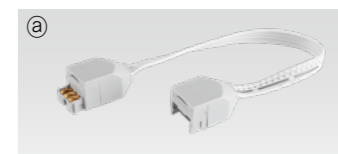


**Accessories**

**Ⓐ Connecting cables (between FLX Stix HDP Pro & FLX Stix HDP Pro)**

| HDPPTC       | HDPPTC1      | HDPPTC2      | HDPPTC4        | HDPPTC6        |
|--------------|--------------|--------------|----------------|----------------|
| 150mm(6inch) | 300mm(1feet) | 600mm(2feet) | 1,200mm(4feet) | 1,800mm(6feet) |

\* Available Color : Black, Gray



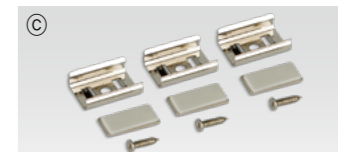
**Ⓑ Power cable : HDPPC (2,500mm)**

Power cable (Between FLX Stix HDP/DDP & 12-way distributor)  
\* Available Color : Black, Gray



**Ⓒ Mounting bracket : HDP-BRACKET1**

HDP-BRACKET1(A) : 1set = 2pcs  
HDP-BRACKET1(B) : 1set = 3pcs



**Ⓓ Angle bracket (15° & 40°) : HDP-BRACKET2**

HDP-BRACKET2(A) : 1set = 2pcs  
HDP-BRACKET2(B) : 1set = 3pcs



**Ⓔ Sidefeed for seamless extension (3W) : DDP3 SC-24V-C90-S**



**Ⓕ End cap : HDP-CAP**



**Ⓖ LED Driver with 12way distributor, with power cord (1,800mm)**

| Part No  | FLC30-24V/T | FLC75-24V-P/T |
|----------|-------------|---------------|
| Capacity | 30W 24V     | 75W 24V       |



**Ⓗ LED Driver : FLC200-24V/T (200W, DC24V)**

LED Driver With 12way distributor



**Ⓘ Dimming Interface (0-10/1-10, DMX512)**

FDA-L2M0 : Max. 200W (100W/CH, 2CH)  
FDA-L5M : Max. 200W (50W/CH, 5CH)



**Ⓛ Dimming Interface (Dali) : FDD-L1DA**

Max. 200W (100W/CH, 1CH)



**Ⓚ Inline dimmer : DDPDIM**

Max 75W in a row

