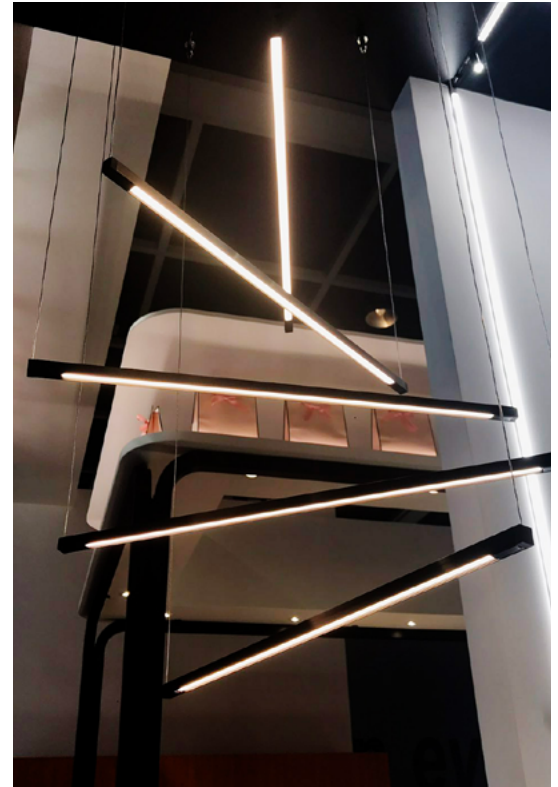
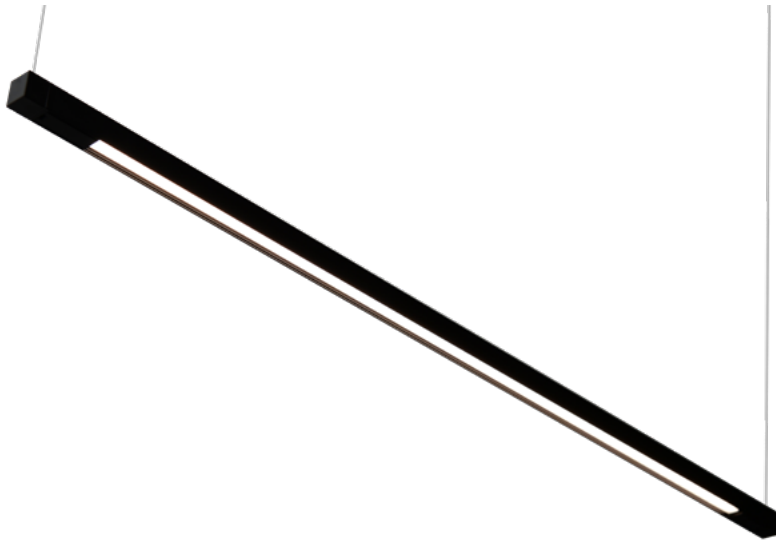


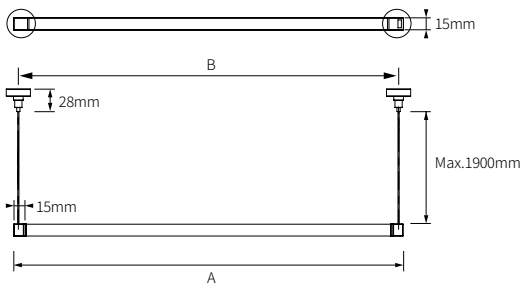
DATE	PROJECT	LOCATION	TYPE
------	---------	----------	------



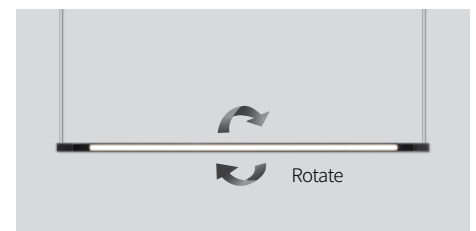
PRODUCT FEATURES

- Aluminum body with rotating top bar
 - Easy Assembly with NDPro Fixture* (NDPro Fixture ordered separately)
 - 1', 2', 3', 4' lengths available
 - Power Over Aircraft Cable Field Adjustable Cable Length
 - Ideal for Suspended Application
 - Dim 0-10V, ELV
- Consult factory for further options

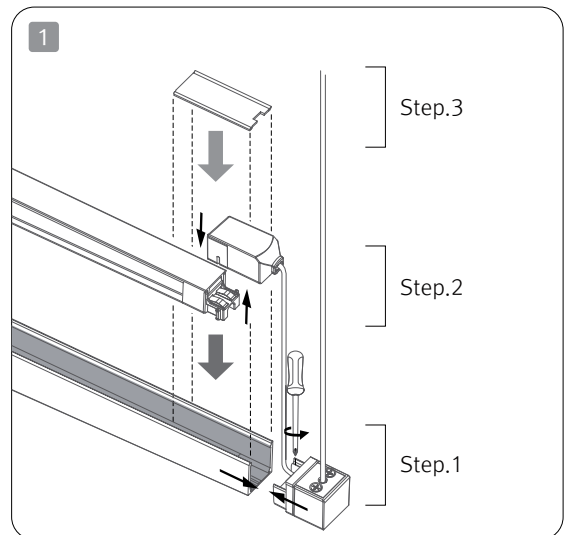
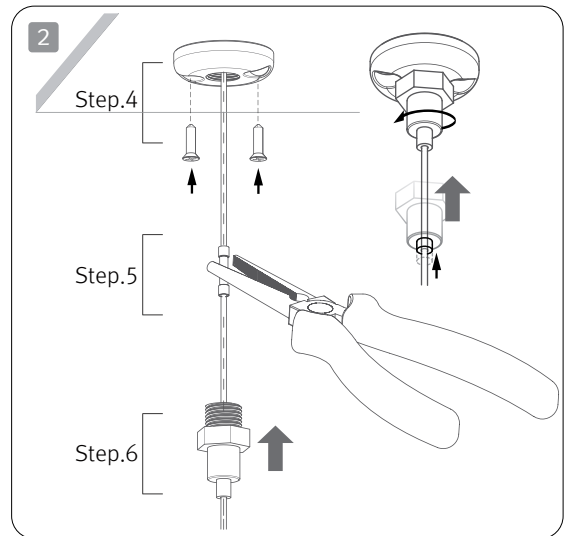
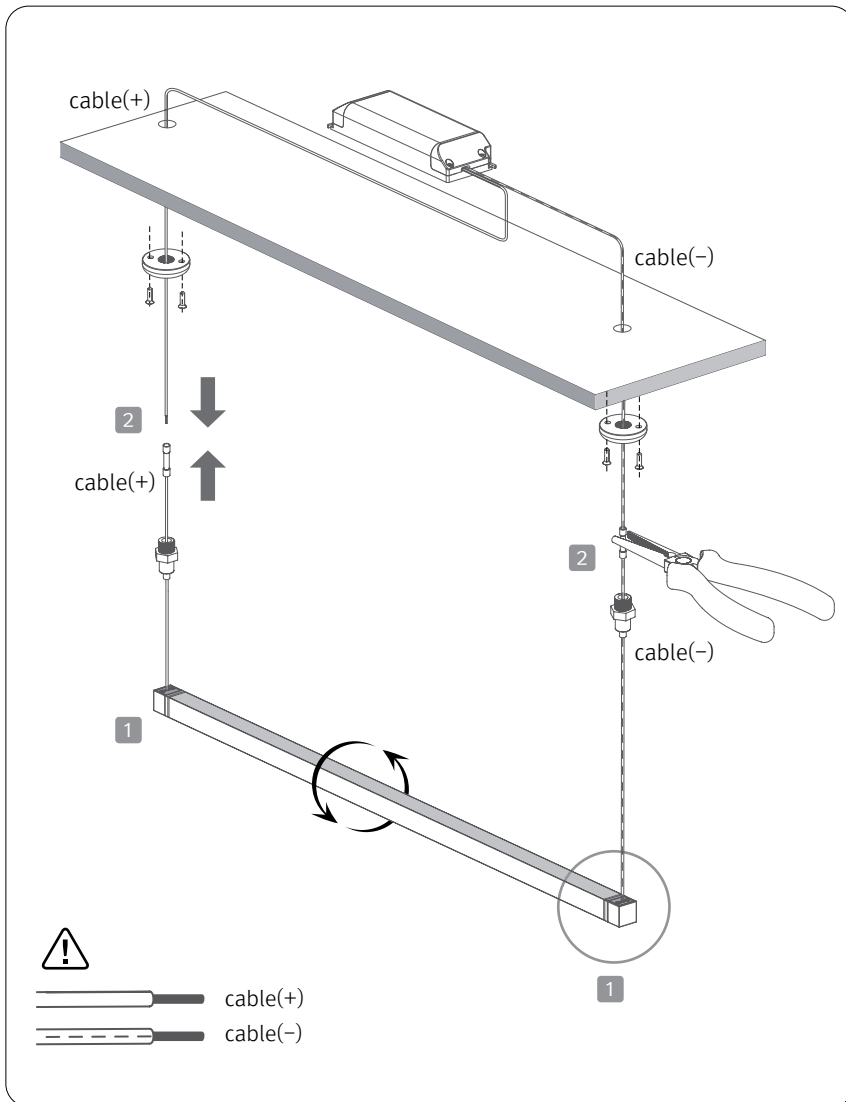
DIMENSIONS



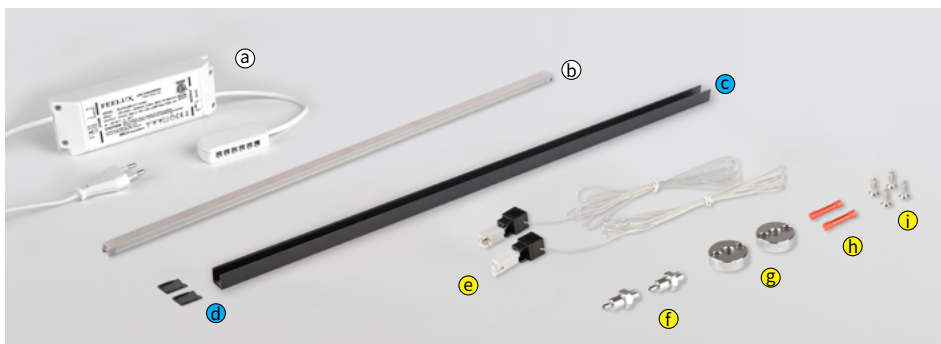
NDPro Pendant for	Lamp Power	Luminous Flux (4000K)	A Pendant length	B NDPro Pendant Bracket Mounting Holes
NDP4 40K-24V-C90	4W	300 lm	384mm(1.26')	369mm(1.21')
NDP7 40K-24V-C90	7W	570 lm	664mm(2.18')	649mm(2.13')
NDP11 40K-24V-C90	11W	860 lm	943mm(3.09')	928mm(3.04')
NDP15 40K-24V-C90	15W	1,210 lm	1222mm(4.01')	1207mm(3.96')



INSTALLATION



Required Accessories

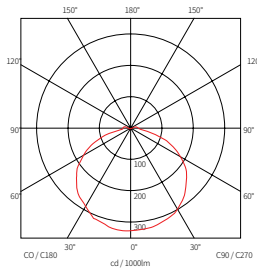


- (a) LED Driver
 - (b) FLX Stix NDPro
 - (c) Top Bar
 - (d) Fix Cover
 - (e) Wire
 - (f) Wire Holder
 - (g) Holder Clamp
 - (h) Wire Terminals
 - (i) Screw
- NDPro Top Bar
- NDPro Pendant Kit

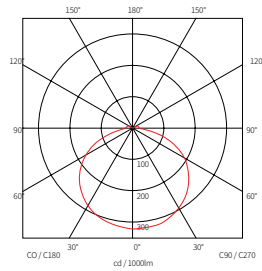
* Item (a) (b) are sold separately

BEAM SPREADS

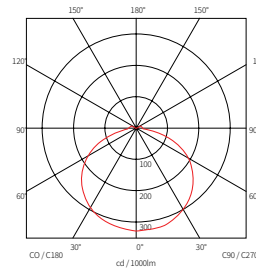
NDP4 40K-24V-C90
75.32 lm/W
270.40 lm



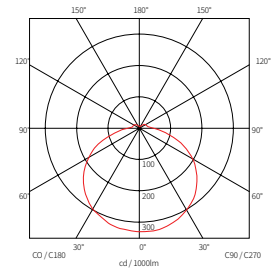
NDP7 40K-24V-C90
74.59 lm/W
531.00 lm



NDP11 40K-24V-C90
74.75 lm/W
797.05 lm



NDP15 40K-24V-C90
75.26 lm/W
1078.47 lm



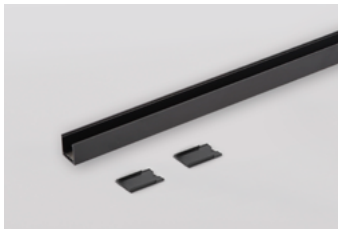
COMPONENTS



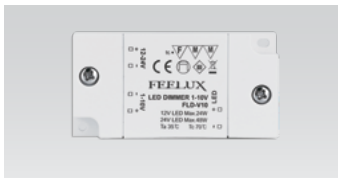
NDPro Pendant Kit
__ NDP-PD-KIT



NDPro Fixture
__ NDP4-(color)K-24V
__ NDP7-(color)K-24V
__ NDP11-(color)K-24V
__ NDP15-(color)K-24V



NDPro Top Bar
__ NDP4TB
__ NDP7TB
__ NDP11TB
__ NDP15TB



Dimming Interface (0-10V)
__ FDC-L10
Max. 100W (100W/CH, 1CH) 0 -10V Signal



Dimming Interface (DMX512)
__ FDA-L2MO
(0-10V/1-10V, DMX512)
Max. 200W (100W/CH, 2CH)
__ FDA-L5M (DMX512)
Max. 200W (50W/CH, 5CH)



Dimming Interface (DALI)
__ FDD-L1DA
Max. 200W (100W/CH, 1CH)



Dimming Interface (Zigbee)_FDD-L2Z
__ FDD-L2Z



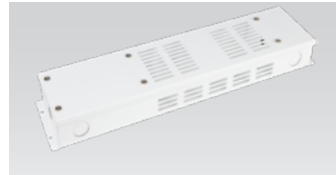
Wireless Control (Zigbee Switch)
__ FSM-Z1



12 Port Hub
__ D12P-HUB
Included with Cord and Plug drivers.
Order separately for Hard Wire or 3rd Party Drivers



LED Drivers
__ FLC30-24V/XL (30W)
__ FLC75-24V/XL (75W)
With distributor and power cord
1800mm (6')



Driver Junction Box
__ MHWB-FLE



Hard Wire Driver
__ XLD200-224V-FCL-DIM
__ XLD75-124V-FC
(90V to 300V)



Hard Wire Driver
__ FLE60-24V-L10-DIM
__ FLE90-24V-L10-DIM
**Additional Power Supply/
Driver Options Available.
Please consult Factory.**

A Larger selection of drivers are available including remote and hard wire drivers. Please consult factory.