

TEST REPORT

1. Applicant

* Client Name :
* Address : 235-48 GWANGJEOK-RO GWANGJEOK-MYEON YANGJU-SI GYENGGI-DO 482-84
* Date of Receipt : 230714

2. Purpose of Report :**3. Number of Report :** 230714**4. Test Standard / Item :** / 230714 MICRO SPOT CREE 30K 60도**5. Test Period :** 230714 ~ 230714**6. Test Environment**

* Ambient Temp. : 22.0 +- 3 °C
* Relative Humidity : 60.0 +- 10 % RH

7. Test Item

* Name of Product :
* Rating :
* Model :

8. Test Result : Refer to the attachment

Confirmation	Test by		Technical manager	
	PKW	Sign	PKW	Sign

- * The result shown in this test report refer only to the sample(s) tested unless otherwise stated.
- * This report cannot be reporduced, except in full.
- * This report is for reference only. It cannot replace the report by standard organization(s).

Result

Report Number	Sample Name	Sample Number	Test Standard
230714			

Test Item	Unit	Result	Notice
Beam Distribution Test		See Attachement	
ATHD	%	0.0	
CIE 1931 Cx, Cy		0.4362 , 0.4044	
Correlated Color Temperature	K	3016	
Ra		91.89	
Power Factor		1.000	
Input Voltage	V	23.987	
Input Current	A	0.050	
Input Watt	W	1.2074	
Lamp Flux	lm	78.8	
Efficient	lm/W	65.26	
luminous Intensity (Max , Center)	cd	103 , 103	
Illuminance	lx	103	1 m
		26	2 m
		11	3 m

* This test result is for the sample provided by the client.

* Sample photo

[Click to load image](#)

Luminaire KH FEELUX

Lamp

Report

230714

No. of lamps 1

Voltage (V)

23.5Filename 230714 MICRO SPOT CREE 30K 60도.jdt

Lamp flux (lm) 79

Current (A)

0.05Operator

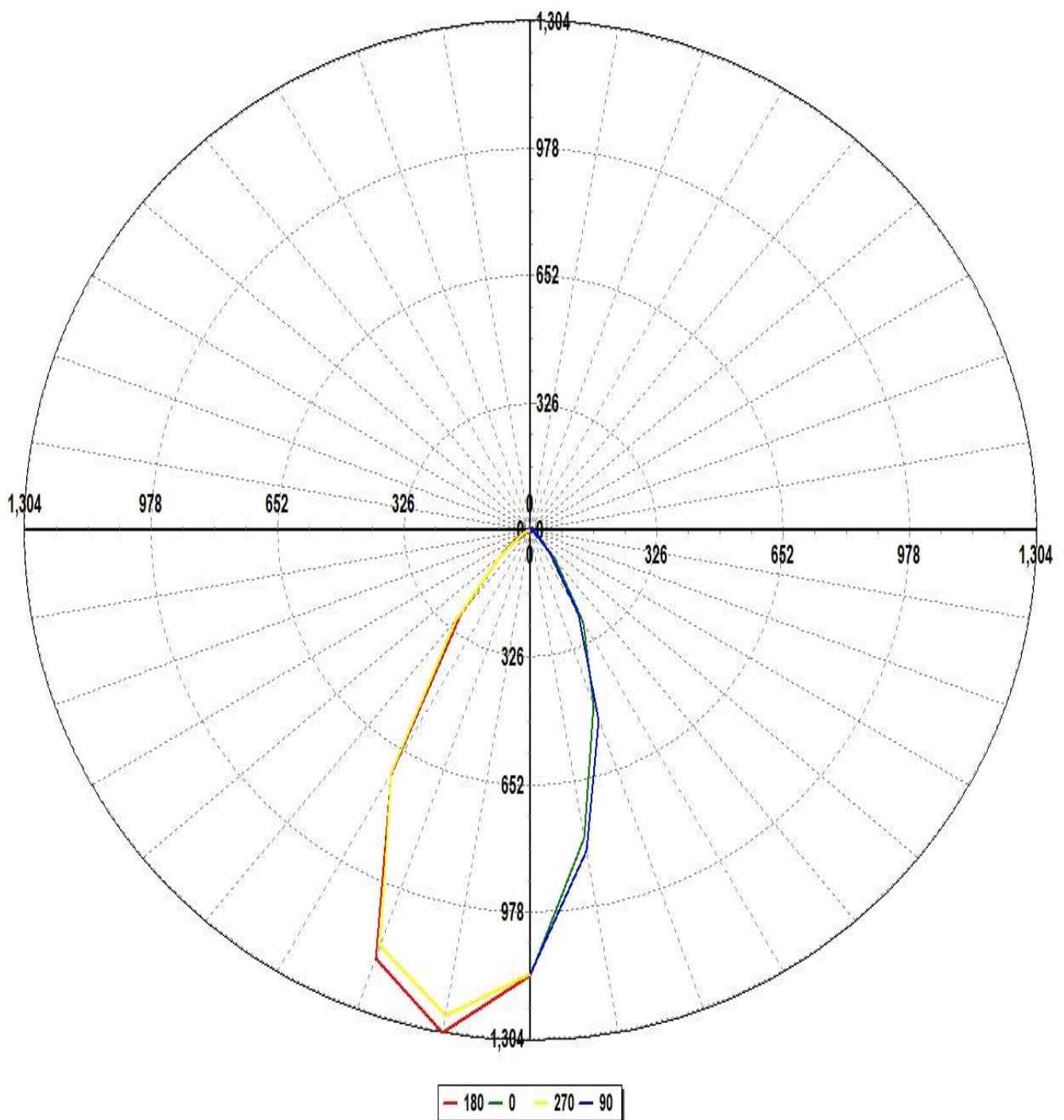
Total flux (lm) 79

Power Factor

Date

2023-07-14 오후 5:56:53

Luminous Intensity Distribution



Luminaire KH FEELUX

Lamp

Report

230714

No. of lamps 1

Voltage (V)

23.9Filename 230714 MICRO SPOT CREE 30K 60도.jdt

Lamp flux (lm) 79

Current (A)

0.05Operator

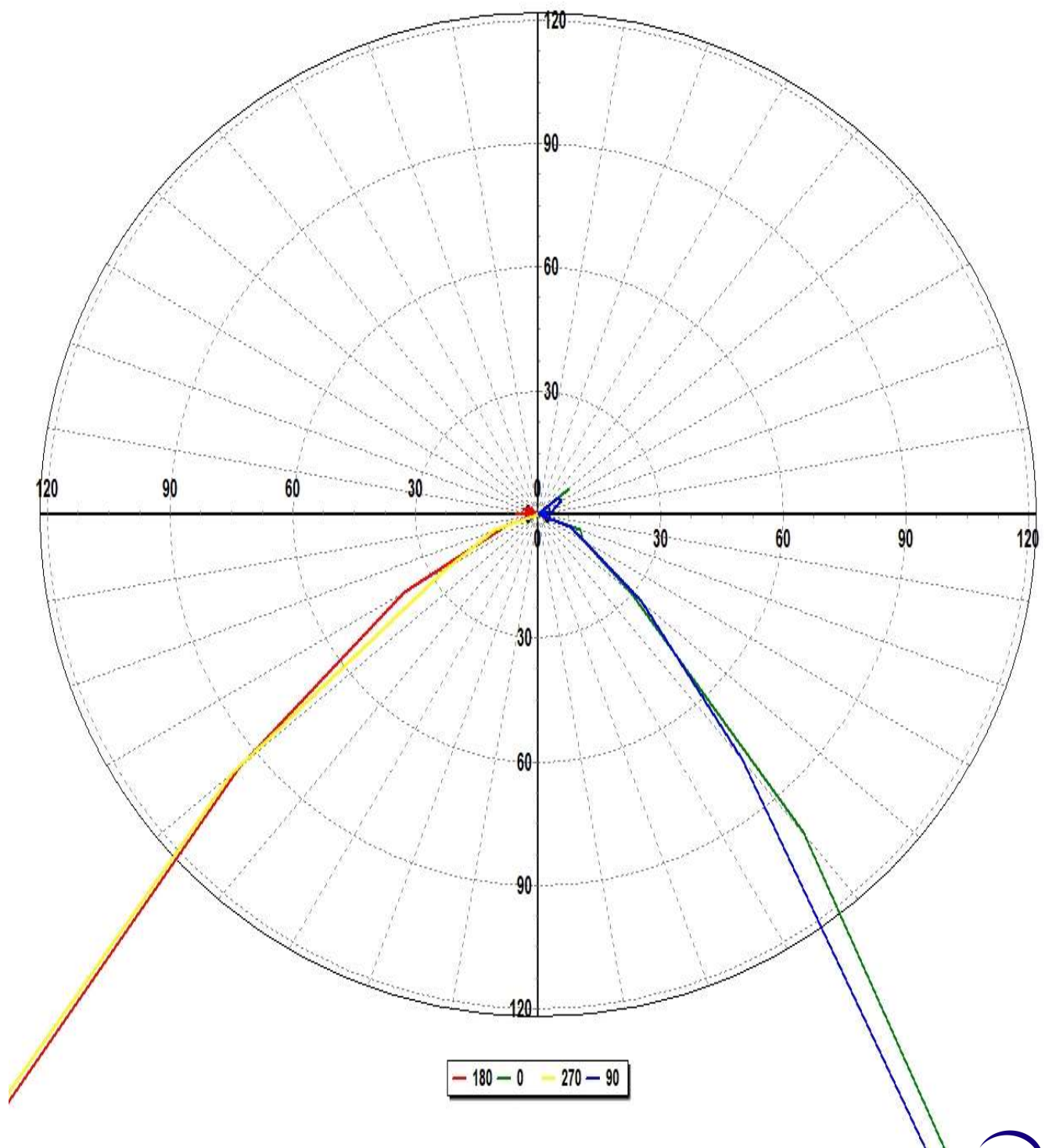
Total flux (lm) 79

Power Factor

Date

2023-07-14 오후 5:56:53

Luminous Intensity Distribution (Lowest 10%)



Total Optical Solution Provider

Luminaire KH FEELUX

Lamp

Report

230714

No. of lamps 1

Voltage (V)

23.9Filename 230714 MICRO SPOT CREE 30K 60도.jdt

Lamp flux (lm) 79

Current (A)

0.05Operator

Total flux (lm) 79

Power Factor

Date

2023-07-14 오후 5:56:53

Luminous Intensity Data

Maximum (cd) : 103

Minimum (cd) : -1

G/C	0	30	60	90	120	150	180	210	240	270	300
0	89.82	87.26	87.98	89.64	93.41	96.55	89.82	87.26	87.98	89.64	93.41
10	63.11	59.36	61.91	65.57	72.21	79.57	103.01	102.67	102.6	99.39	96.51
20	37.48	35.28	36.81	40.8	45.26	47.11	92.13	94.94	93.44	89.51	80.24
30	21.5	19.66	20.1	19.31	20.2	18.75	56.78	59.4	58.13	56.65	52.62
40	7.95	7.33	7.49	6.12	6.82	6.59	21.89	22.52	22.54	23.52	22.07
50	2.31	1.38	2.59	2.59	2.19	1.62	7.48	6.62	6.64	7.73	7.27
60	1.01	0.61	1.26	1.04	0.24	0.4	2.97	2.06	2.36	2.01	2.23
70	0.86	-0.1	0	0.66	-0.57	0.23	0.63	0.67	0.94	0.88	0.93
80	-0.4	-0.37	-0.03	0.03	0.23	-0.78	-0.25	0.1	0.22	-0.06	0.05
90	0.14	-0.42	-0.02	-0.25	-0.1	-0.61	0.43	0.39	-0.44	-0.05	-0.3
100	-0.23	-0.33	0.74	0.28	0.15	0.07	-0.32	0.48	-0.53	-0.14	0.27
110	-0.68	-0.02	-0.14	0.33	0.48	-0.05	0.32	-0.29	0.3	-0.04	0.14
120	-0.52	0.35	0.35	0.52	0.25	-0.22	-0.21	-0.36	-0.02	0.04	0.25
130	0.78	0.19	0.95	0.49	0.27	0.72	0.24	-0.14	-0.28	0.02	0.49

Luminaire KH FEELUX

Lamp

Report

230714

No. of lamps 1

Voltage (V)

23.9Filename 230714 MICRO SPOT CREE 30K 60도.jdt

Lamp flux (lm) 79

Current (A)

0.05Operator

Total flux (lm) 79

Power Factor

Date

2023-07-14 오후 5:56:53

Luminous Intensity Data (Continued)

Maximum (cd) : 103

Minimum (cd) : -1

G/C	330	360
0	96.55	89.82
10	92.25	63.11
20	71.33	37.48
30	45.95	21.5
40	22	7.95
50	7.14	2.31
60	2.24	1.01
70	1.16	0.86
80	0.55	-0.4
90	0.42	0.14
100	0.25	-0.23
110	0.65	-0.68
120	0.58	-0.52
130	0.33	0.78

Luminaire KH FEELUX

Lamp

Report

230714

No. of lamps 1

Voltage (V)

230VFilename 230714 MICRO SPOT CREE 30K 60도.jdt

Lamp flux (lm) 79

Current (A)

0.05Operator

Total flux (lm) 79

Power Factor

Date

2023-07-14 오후 5:56:53

Luminous Flux Table

Total Lamp Lumens: 78.831

Luminaire Efficiency (lm/W): 65.29

CIE Classification: Direct

Elevation	Lumens	Cumulative	Lamp %	Luminaire %
0	2.17	2.17	2.75	2.75
10	15.82	17.99	22.83	22.82
20	23.86	41.85	53.11	53.09
30	20.49	62.34	79.11	79.08
40	10.37	72.72	92.28	92.24
50	3.88	76.60	97.21	97.17
60	1.46	78.06	99.06	99.02
70	0.54	78.60	99.74	99.70
80	-0.06	78.53	99.66	99.62
90	-0.07	78.46	99.57	99.53
100	0.06	78.52	99.65	99.61
110	0.08	78.61	99.75	99.71
120	0.08	78.68	99.85	99.81
130	0.15	78.83	100.04	100.00

Luminaire KH FEELUX

Lamp

Report

230714

No. of lamps 1

Voltage (V)

23.9\Filename 230714 MICRO SPOT CREE 30K 60도.jdt

Lamp flux (lm) 79

Current (A)

0.05\Operator

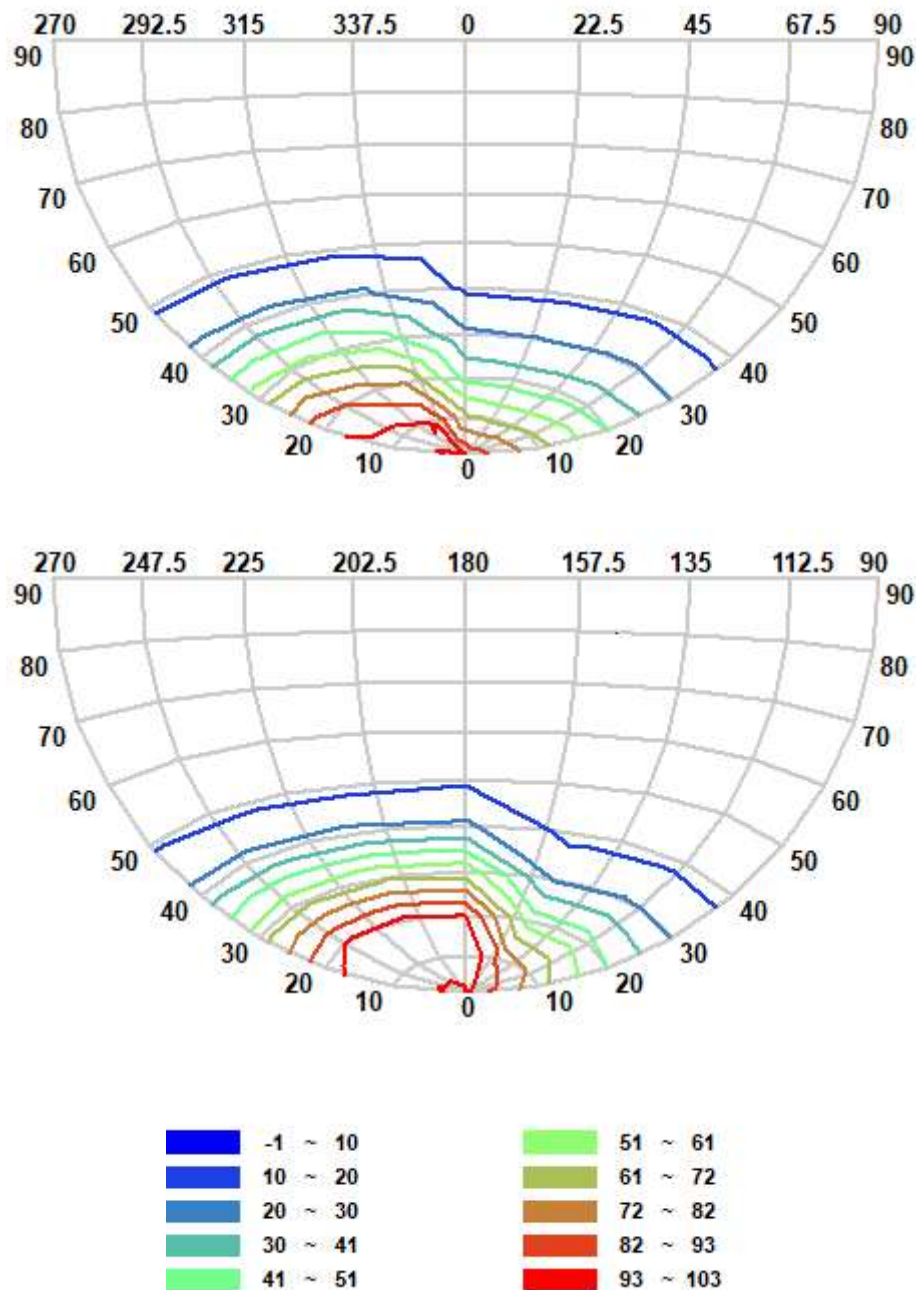
Total flux (lm) 79

Power Factor

Date

2023-07-14 오후 5:56:53

IsoCandela (Type C)



Luminaire KH FEELUX

Lamp

Report

230714

No. of lamps 1

Voltage (V)

23.9Filename 230714 MICRO SPOT CREE 30K 60도.jdt

Lamp flux (lm) 79

Current (A)

0.05Operator

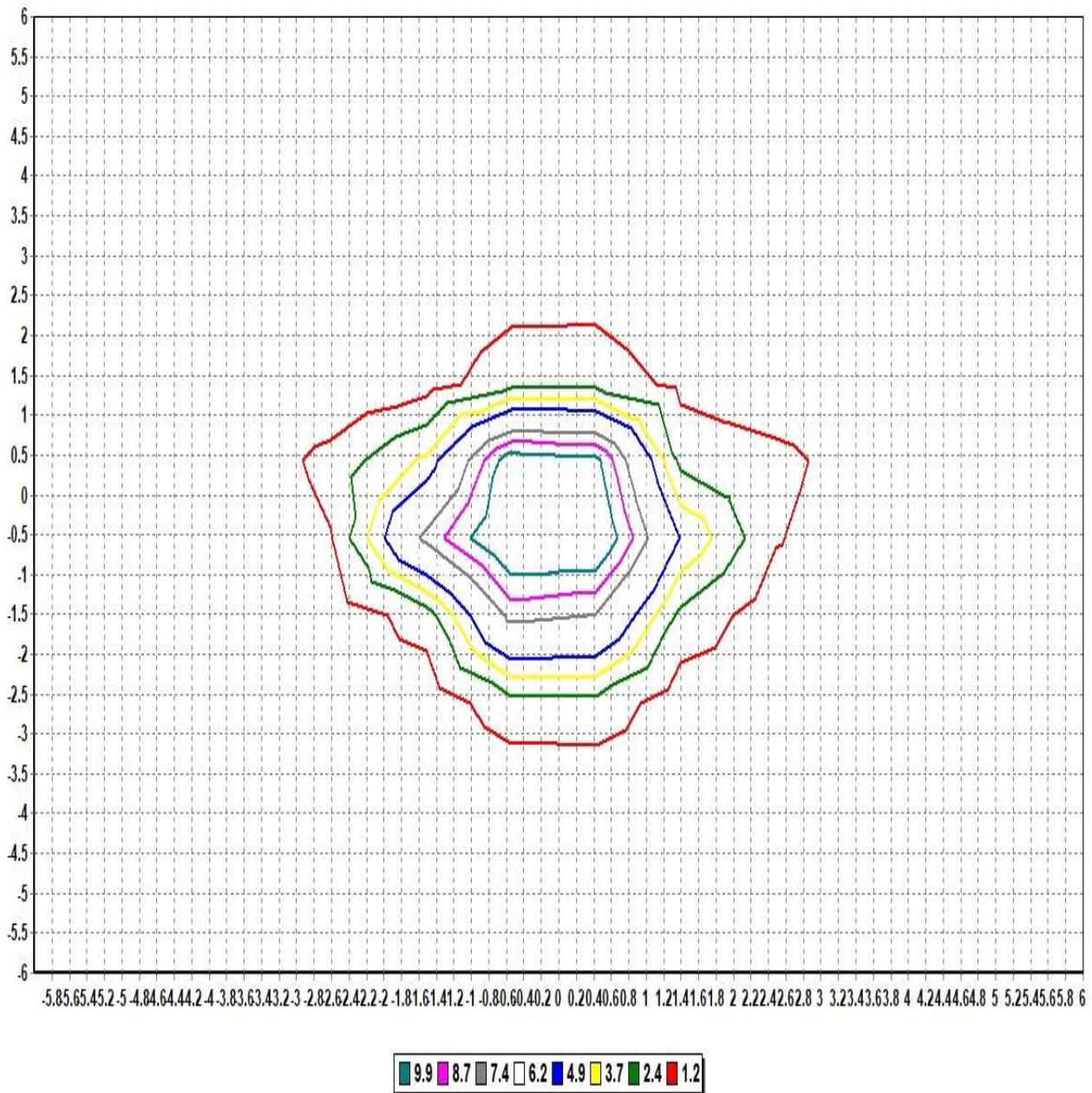
Total flux (lm) 79

Power Factor

Date

2023-07-14 오후 5:56:53

IsoLux Diagram (Ground)



Pole Height (m): 2.7

Area Width (m): 12

Total Optical Solution Provider

Luminaire KH FEELUX

Lamp

Report

230714

No. of lamps 1

Voltage (V)

23.5Filename 230714 MICRO SPOT CREE 30K 60도.jdt

Lamp flux (lm) 79

Current (A)

0.05Operator

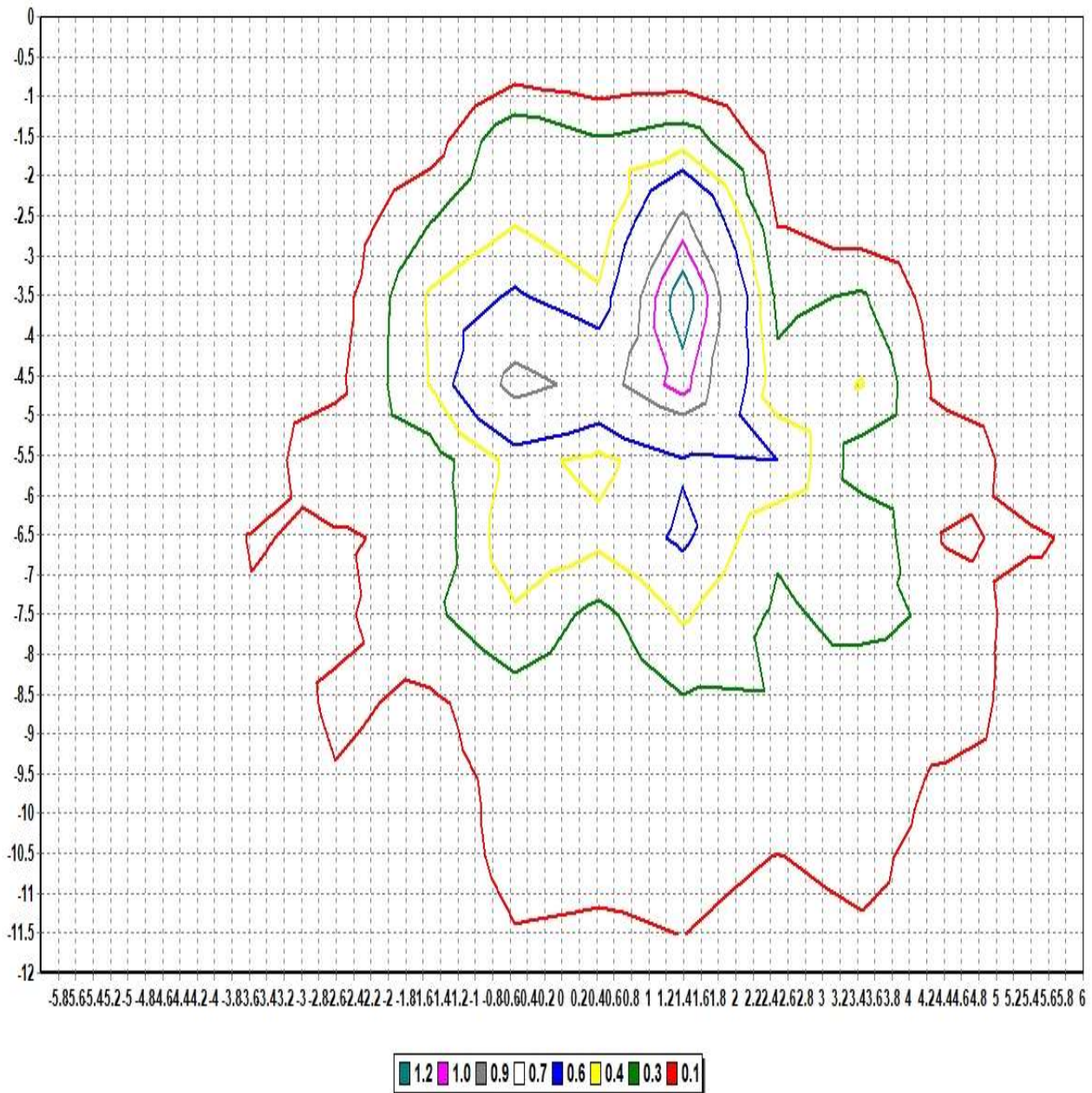
Total flux (lm) 79

Power Factor

Date

2023-07-14 오후 5:56:53

IsoLux Diagram (Wall)



Pole Height (m): 2.7

Wall Distance (m): 2.7

Aiming Plane: 0

Wall Height (m): 12

Total Optical Solution Provider

Luminaire KH FEELUX

Lamp

No. of lamps	1	Voltage (V)	23.987
Lamp flux (lm)	79	Current (A)	0.05034
Total flux (lm)	79	Power Factor	1

Report 230714

Filename 230714 MICRO SPOT CREE 30K 60도.jdt

Operator

Date 2023-07-14 오후 5:56:53

Illuminance Levels (Ground)

6.00	0.00	0.00	0.00	0.00	0.00	0.01	0.01	0.01	0.00	0.00	0.00	0.00	0.00
5.00	0.00	0.00	0.00	0.01	0.02	0.03	0.03	0.03	0.02	0.01	0.00	0.00	0.00
4.00	0.00	0.00	0.02	0.03	0.01	0.04	0.04	0.04	0.01	0.03	0.02	0.01	0.00
3.00	0.00	0.00	0.02	0.02	0.15	0.10	0.14	0.08	0.17	0.02	0.03	0.01	0.00
2.00	0.00	0.02	0.01	0.15	0.18	0.45	0.76	0.49	0.18	0.18	0.01	0.02	0.00
1.00	0.01	0.06	0.06	0.08	0.46	2.41	7.33	2.32	0.49	0.08	0.06	0.06	0.01
0.00	0.02	0.10	0.11	0.42	2.42	11.61	12.32	7.05	0.90	0.14	0.04	0.03	0.01
-1.00	0.01	0.05	0.06	0.29	1.49	6.34	11.21	5.89	1.45	0.30	0.06	0.05	0.01
-2.00	0.01	0.07	0.05	0.51	0.57	1.50	2.49	1.46	0.59	0.51	0.05	0.07	0.01
-3.00	0.01	0.02	0.10	0.08	0.52	0.28	0.45	0.31	0.54	0.07	0.09	0.02	0.01
-4.00	0.00	0.01	0.05	0.09	0.05	0.09	0.10	0.09	0.05	0.10	0.06	0.01	0.01
-5.00	0.01	0.01	0.01	0.02	0.06	0.09	0.10	0.08	0.07	0.01	0.01	0.01	0.01
-6.00	0.01	0.01	0.01	0.01	0.01	0.01	0.01	0.01	0.01	0.01	0.01	0.01	0.01
-6.00	-5.00	-4.00	-3.00	-2.00	-1.00	0.00	1.00	2.00	3.00	4.00	5.00	6.00	

Illum. (Max.) : 12.321

Illum. (Min.) : -0.0024

Illum. (Avg.) : 0.5392

All illuminance level values are in lux.



Luminaire KH FEELUX

Lamp

Report

230714

No. of lamps 1

Voltage (V)

230VFilename 230714 MICRO SPOT CREE 30K 60도.jdt

Lamp flux (lm) 79

Current (A)

0.05Operator

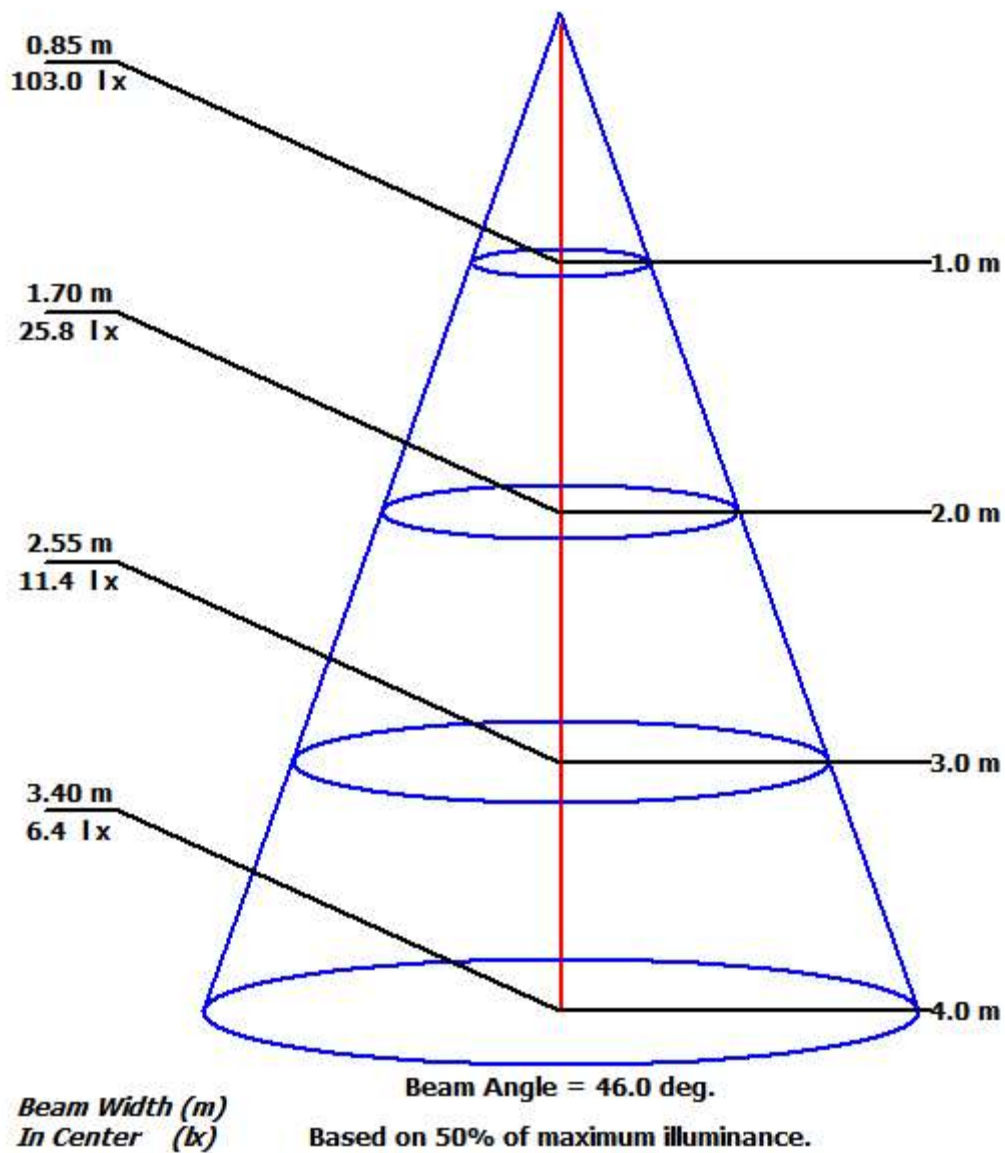
Total flux (lm) 79

Power Factor

Date

2023-07-14 오후 5:56:53

Illuminance Cone Diagram



Luminaire KH FEELUX

Lamp

Report

230714

No. of lamps 1

Voltage (V) 23.987

Filename 230714 MICRO SPOT CREE 30K 60도.jdt

Lamp flux (lm) 79

Current (A) 0.05034

Operator

Total flux (lm) 79

Power Factor 1

Date 2023-07-14 오후 5:56:53

Coefficient of Utilization

	Refl. Ceiling (%)	80%	80%	80%	70%	70%	70%	50%	50%	50%	30%	30%	30%	10%	10%	10%	0%
	Refl. Wall (%)	50%	30%	10%	50%	30%	10%	50%	30%	10%	50%	30%	10%	50%	30%	10%	0%
Eff. Floor Cavity	Refl.	20%	20%	20%	20%	20%	20%	20%	20%	20%	20%	20%	20%	20%	20%	20%	20%
Room CR	0	0.00	0.00	0.00	0.00	0.00	0.00	0.00	0.00	0.00	0.00	0.00	0.00	0.00	0.00	0.00	0.00
Room CR	1	0.00	0.00	0.00	0.00	0.00	0.00	0.00	0.00	0.00	0.00	0.00	0.00	0.00	0.00	0.00	0.00
Room CR	2	0.00	0.00	0.00	0.00	0.00	0.00	0.00	0.00	0.00	0.00	0.00	0.00	0.00	0.00	0.00	0.00
Room CR	3	0.00	0.00	0.00	0.00	0.00	0.00	0.00	0.00	0.00	0.00	0.00	0.00	0.00	0.00	0.00	0.00
Room CR	4	0.00	0.00	0.00	0.00	0.00	0.00	0.00	0.00	0.00	0.00	0.00	0.00	0.00	0.00	0.00	0.00
Room CR	5	0.00	0.00	0.00	0.00	0.00	0.00	0.00	0.00	0.00	0.00	0.00	0.00	0.00	0.00	0.00	0.00
Room CR	6	0.00	0.00	0.00	0.00	0.00	0.00	0.00	0.00	0.00	0.00	0.00	0.00	0.00	0.00	0.00	0.00
Room CR	7	0.00	0.00	0.00	0.00	0.00	0.00	0.00	0.00	0.00	0.00	0.00	0.00	0.00	0.00	0.00	0.00
Room CR	8	0.00	0.00	0.00	0.00	0.00	0.00	0.00	0.00	0.00	0.00	0.00	0.00	0.00	0.00	0.00	0.00
Room CR	9	0.00	0.00	0.00	0.00	0.00	0.00	0.00	0.00	0.00	0.00	0.00	0.00	0.00	0.00	0.00	0.00
Room CR	10	0.00	0.00	0.00	0.00	0.00	0.00	0.00	0.00	0.00	0.00	0.00	0.00	0.00	0.00	0.00	0.00