

ACTUAL SIZE

**PRODUCT FEATURES**

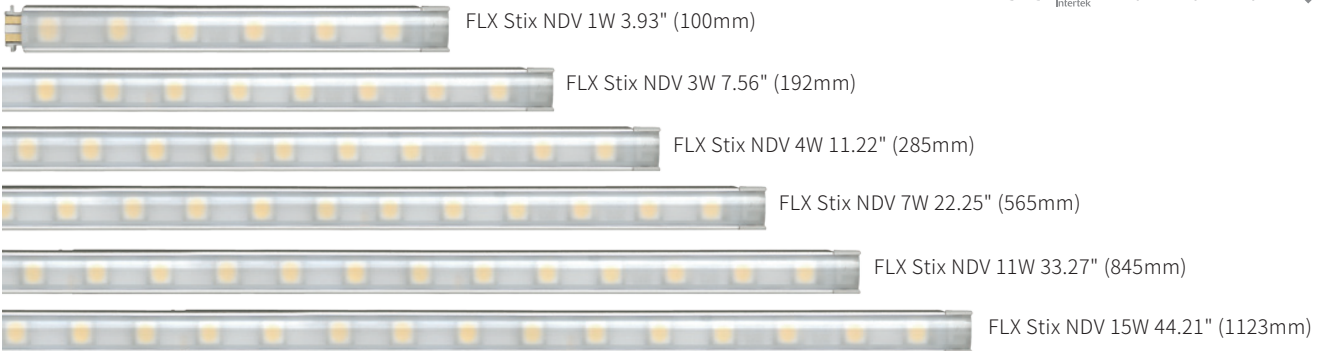
- Seamless Illumination. No Dark Spots
- Ultra Slim Profile
- Even Surface Illumination
- Spot Free Lens Options
- Multiple Lengths for Easy Configuration
- End to End Snap-In Connection
- Dimmable with 0-10V, Forward/Reverse Phase. Other Options Available
- Side-Feed Units for Long Continuous Runs
- Quick Ship Available\*

**PRODUCT SPECIFICATIONS**

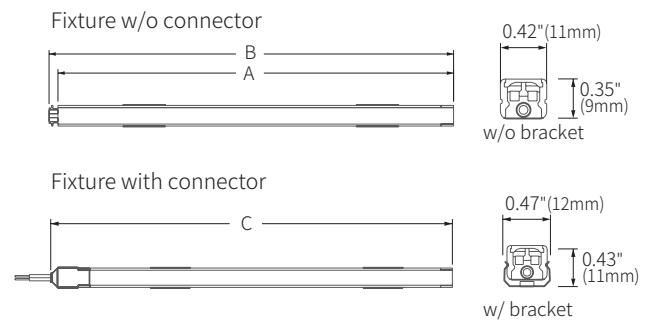
- 24VDC Constant Voltage Feelux or Approved Class 2 Drivers
- Operating Temperature: 32-113°F (0-45°C)
- Lamp Life: 50,000 hrs L70
- Available Color: 2700K, 3000K, 3500K, 4000K, 6000K\*
- CRI/Ra > 85
- 81.07 lm/W - 3.84W/ft - 312 lm/ft
- IP20 – Damp Location/Closet Approved
- Beam Angle: 95° / Round and Square Lens - 220°
- Finish: Aluminum
- 5 year Warranty
- Product is approved for Closet/Storage space installation per NEC410.16 (A) (3) and NEC410.16 (C)(5) per NRTL certification

\* Pending factory availability

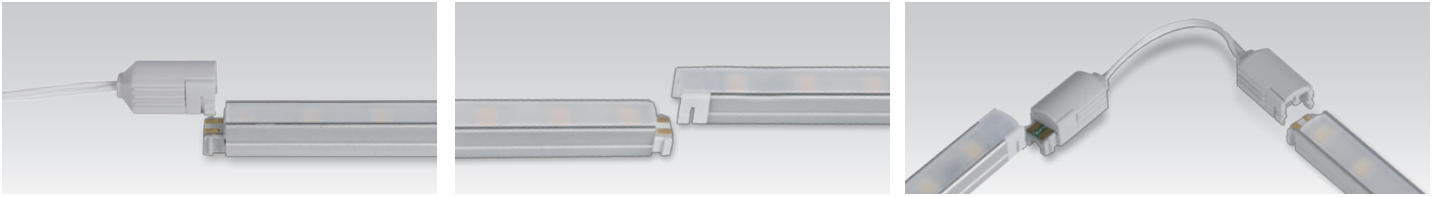
**DIMENSIONS**



| Model Number       | Voltage Input (V) | Power Input (W) | Luminous Flux (lm)/4000K | A inches (mm) | B inches (mm) | C inches (mm) |
|--------------------|-------------------|-----------------|--------------------------|---------------|---------------|---------------|
| NDV1-(Color)K-24V  | DC 24             | 1.28            | 99                       | 3.74" (95)    | 3.93" (100)   | 4.6" (117)    |
| NDV3-(Color)K-24V  | DC 24             | 2.51            | 203.1                    | 7.4" (188)    | 7.5" (192)    | 8.26" (210)   |
| NDV4-(Color)K-24V  | DC 24             | 3.71            | 306.4                    | 11" (280)     | 11.2" (285)   | 11.8" (302)   |
| NDV7-(Color)K-24V  | DC 24             | 7.6             | 563.1                    | 22" (560)     | 22.2" (565)   | 22.9" (582)   |
| NDV11-(Color)K-24V | DC 24             | 11.22           | 912.2                    | 33" (840)     | 33.2" (845)   | 33.9" (862)   |
| NDV15-(Color)K-24V | DC 24             | 1415            | 1147.9                   | 44" (1118)    | 44.2" (1123)  | 44.9" (1140)  |

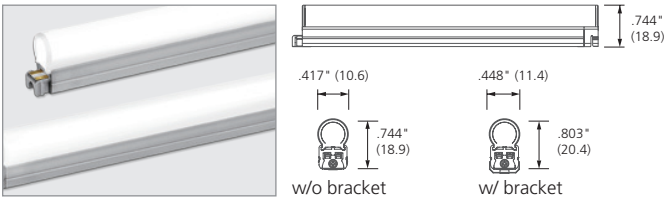


**EASY CONNECTION**

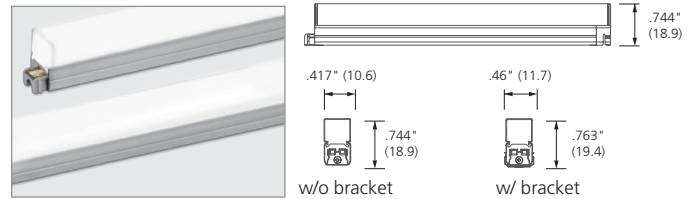


**DIFFUSERS**

Round Diffuser (optional spot free lens)\*

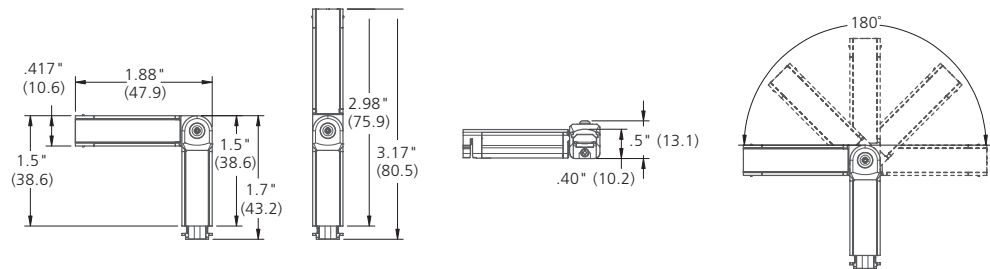


Square Diffuser (optional spot free lens)\*

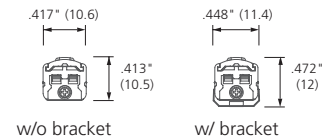
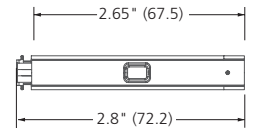


\* Not available for Flexible Connecting Fixture

**FLEXIBLE CONNECTING FIXTURE**

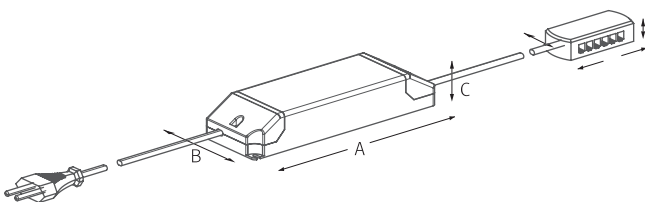


**INLINE DIMMER**



**LED DRIVER OPTIONS**

Consult factory for additional options.

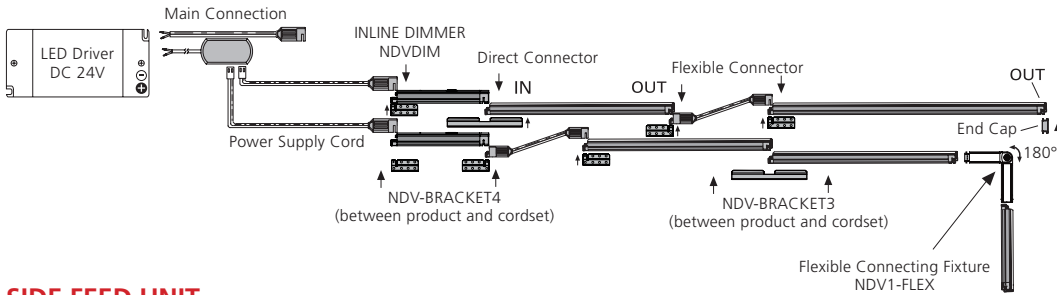


| Model Number        | A<br>inches (mm) | B<br>inches (mm) | C<br>inches (mm) |
|---------------------|------------------|------------------|------------------|
| FLC30-24V/XL        | 5.9" (150)       | 1.6" (41)        | 1.22" (31)       |
| FLC75-24V/XL        | 7.08" (180)      | 2.36" (60)       | 1.25" (32)       |
| XLD75-124V-FC       | 11.22" (285)     | 2.94" (74.7)     | 1.63" (41.5)     |
| XLD200-224V-FCL-DIM | 12.28" (312)     | 4.46" (113.5)    | 2.28" (60.5)     |
| XLAV80(L)-124V-SSB  | 14.4" (366)      | 4.48" (124)      | 1.7" (43)        |

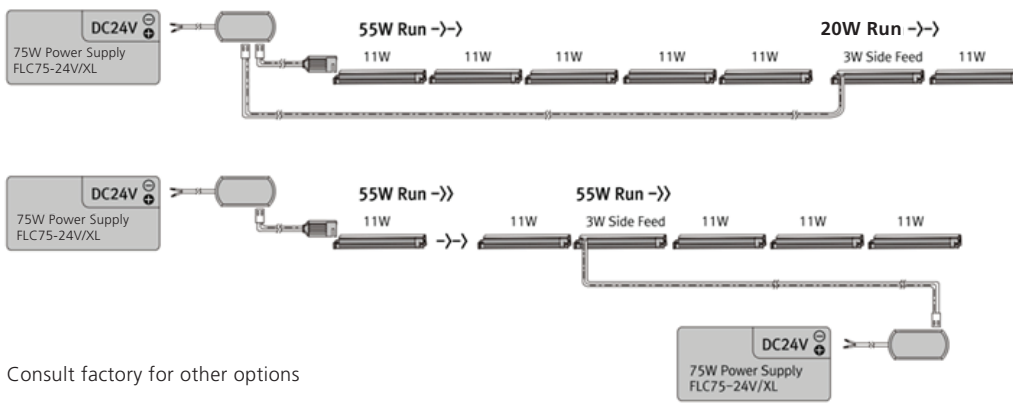
**CONNECTION**

**NO RUN TO EXCEED 55W**

IF LONGER RUNS ARE REQUIRED USE SIDE FEED UNIT NDV3-(COLOR)K-24V-S TO CONTINUE SEAMLESS LIGHTING. NOT TO EXCEED 90% OF DRIVER RATED WATTAGE.

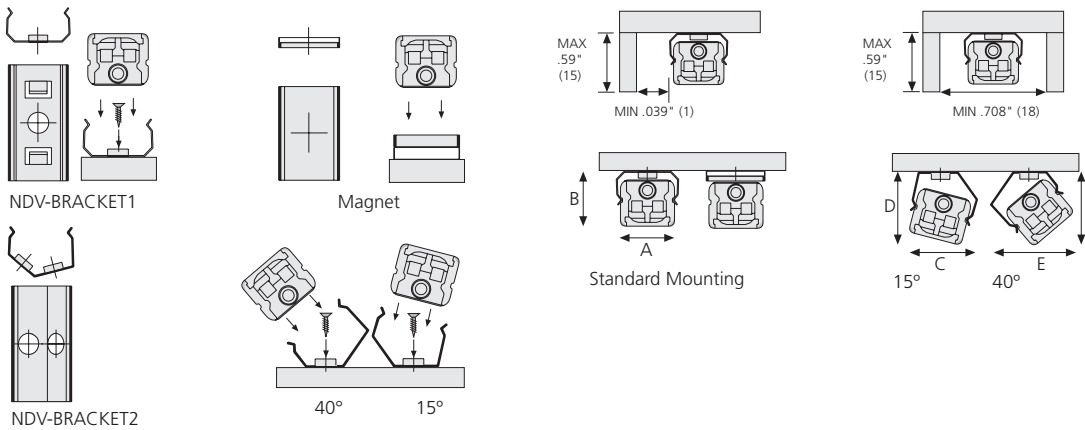


**SIDE FEED UNIT**



Consult factory for other options

**MOUNTING**

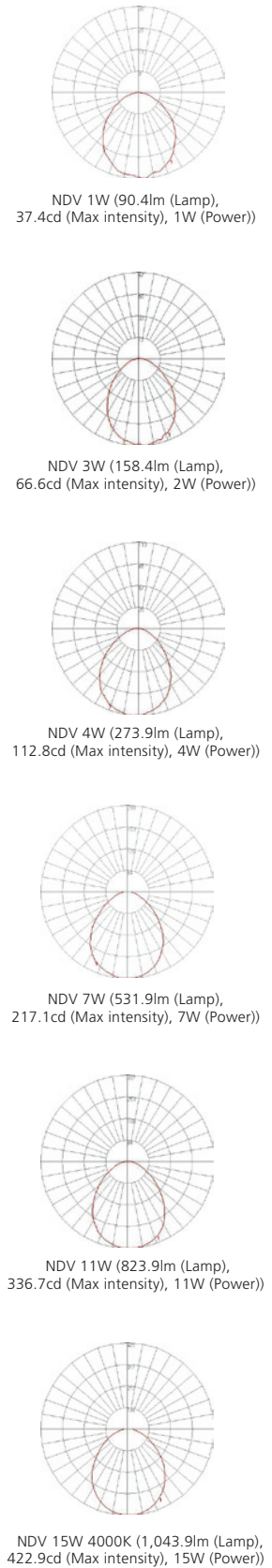


**LENS DIMENSION**



|                  | A            | B            | C            | D            | E           | F            |
|------------------|--------------|--------------|--------------|--------------|-------------|--------------|
| Standard         | .468" (11.9) | .44" (11.2)  | .531" (13.5) | .531" (13.5) | .57" (14.5) | .511" (13)   |
| Round Spot Free  | .468" (11.9) | .779" (19.8) | .618" (15.7) | .618" (15.7) | .74" (18.8) | .799" (20.3) |
| Square Spot Free | .468" (11.9) | .771" (19.6) | .61" (15.5)  | .622" (15.8) | .74" (18.8) | .799" (20.3) |

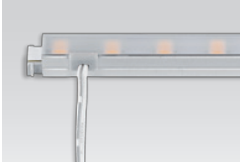
**BEAM SPREADS**



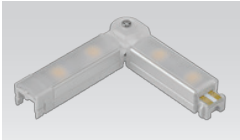
COMPONENTS



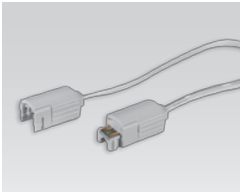
**Power Cable**  
 \_\_\_ NDVPC (8')  
 \_\_\_ NDVPC (13')



**Sidefeed for Seamless Extension (3W)**  
 \_\_\_ NDV3-(color)K-24V-S



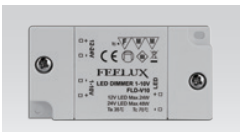
**Flexible Connecting Fixture (1W)**  
 \_\_\_ NDV1-(color)K-24V-Flex



**Flexible Connecting Cable**  
 \_\_\_ NDVPTC (6")  
 \_\_\_ NDVPTC1 (1')  
 \_\_\_ NDVPTC2 (2')  
 \_\_\_ NDVPTC4 (4')  
 \_\_\_ NDVPTC6 (6')



**In-Line Dimmer**  
 \_\_\_ NDVDIM  
 (Max 55W in a row)



**Dimming Interface**  
 Max. 100W (100W/CH, 1CH)  
 0 -10V Signal  
 \_\_\_ FDC-L10



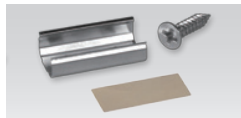
**Square Diffuser**  
 \_\_\_ NDV-1W-SM (4")  
 \_\_\_ NDV-3W-SM (7.6")  
 \_\_\_ NDV-4W-SM (1')  
 \_\_\_ NDV-7W-SM (2')  
 \_\_\_ NDV-11W-SM (3')  
 \_\_\_ NDV-15W-SM (4')



**Round Diffuser**  
 \_\_\_ NDV-1W-RM (4")  
 \_\_\_ NDV-3W-RM (7.6")  
 \_\_\_ NDV-4W-RM (1')  
 \_\_\_ NDV-7W-RM (2')  
 \_\_\_ NDV-11W-RM (3')  
 \_\_\_ NDV-15W-RM (4')



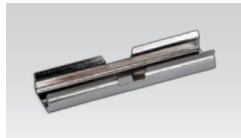
**End Cap**  
 \_\_\_ NDV-CAP  
 Included with fixture



**Metal Mounting Brackets**  
 \_\_\_ NDV-BRACKET1  
 Included with fixture



**Angled Brackets**  
 Angled 15°/40° (BK2)  
 \_\_\_ NDV-BRACKET2  
 Optional



**Connecting Brackets**  
 Fixture to Fixture  
 \_\_\_ NDV-BRACKET3  
 Included with fixture



**Power Brackets**  
 Power Feed to Fixture  
 \_\_\_ NDV-BRACKET4  
 Included with NDVPC and NDVPTC

**A larger selection of drivers are available including remote and hard wire drivers. Please consult factory.**



**LED Drivers**  
 with distributor and power cord (1800mm)  
 \_\_\_ FLC30-24V/XL  
 \_\_\_ FLC75-24V/XL



**Hard Wire Driver**  
 (90V to 300V)  
 \_\_\_ XLAV80(L)-124V-SSB  
 \_\_\_ XLD200-224V-FCL-DIM  
 \_\_\_ XLD75-124V-FC



**Hard Wire Driver**  
 \_\_\_ FLE90-24V-L100DIM  
 Other Power Supplies/Driver Options Available. Please contact factory.



**12 Port Hub**  
 \_\_\_ D12P-HUB  
 Included with Cord and Plug drivers. Order separately for Hard Wire or 3rd Party Drivers

**SPECIFICATION GUIDE:** NOT TO BE USED FOR ORDERING. The Specification Guide is intended solely to ensure that all options are considered.

| MODEL | COLOR  | LENS  | MOUNTING   | CONFIGURATION             | RUN LENGTH  | DRIVER   | CONTROLS   | VOLTAGE                      |
|-------|--|---|--|---------------------------|---|--|--|------------------------------|
| NDV   |  |   |  |                           | ft.   |  |  |                              |
| NDV   | 27K -2700K<br>30K -3000K<br>35K -3500K<br>40K -4000K<br>60K -6000K | ST -Flat Frosted<br>RM -Round Milky<br>SM -Square Milky<br>(RM and SM optional) | STD - Flat Brackets<br>Magnets Included<br>BK2 -15°/40° Brackets | S -Straight<br>V -Varies* | <b>RUN LENGTH IN FEET</b><br>Fill out for every run section<br><br><b>*DRAWINGS AND RUN LENGTH REQUIRED</b> | CP - Cable/Plug<br>HW - Hard Wire<br>TD - 3rd Party Drivers<br>Consult Factory | NDM Non-Dim<br>IDM Inline Dim<br>FDC 0-10V Interface<br>FPH Forward Phase<br>RPH Reverse Phase | 100V<br>120V<br>230V<br>277V |

**NOTE: No Run to Exceed 55W without use of Side Feed Unit**