

TEST REPORT

1. Applicant

* Client Name :
* Address : 235-48 GWANGJEOK-RO GWANGJEOK-MYEON YANGJU-SI GYENGGI-DO 482-84
* Date of Receipt : 230608

2. Purpose of Report :

3. Number of Report : 230607

4. Test Standard / Item : / 230607 MSP3 30K 60도

5. Test Period : 230607 ~ 230608

6. Test Environment

* Ambient Temp. : 22.0 +- 3 °C
* Relative Humidity : 60.0 +- 10 % RH

7. Test Item

* Name of Product :
* Rating :
* Model :

8. Test Result : Refer to the attachment

Confirmation	Test by		Technical manager	
	PKW	Sign	PKW	Sign

- * The result shown in this test report refer only to the sample(s) tested unless otherwise stated.
- * This report cannot be reporduced, except in full.
- * This report is for reference only. It cannot replace the report by standard organization(s).

Result

Report Number	Sample Name	Sample Number	Test Standard
230607			

Test Item	Unit	Result	Notice
Beam Distribution Test		See Attachement	
ATHD	%	0.0	
CIE 1931 Cx, Cy		0.4323 , 0.4031	
Correlated Color Temperature	K	3073	
Ra		93.24	
Power Factor		1.000	
Input Voltage	V	23.982	
Input Current	A	0.117	
Input Watt	W	2.8119	
Lamp Flux	lm	215.9	
Efficient	lm/W	76.78	
luminous Intensity (Max , Center)	cd	320 , 318	
Illuminance	lx	318	1 m
		79	2 m
		35	3 m

* This test result is for the sample provided by the client.

* Sample photo

[Click to load image](#)

Luminaire KH FEELUX

Lamp

Report

230607

No. of lamps 1

Voltage (V) 23.982

Filename 230607 MSP3 30K 60도.jdt

Lamp flux (lm) 216

Current (A) 0.11725

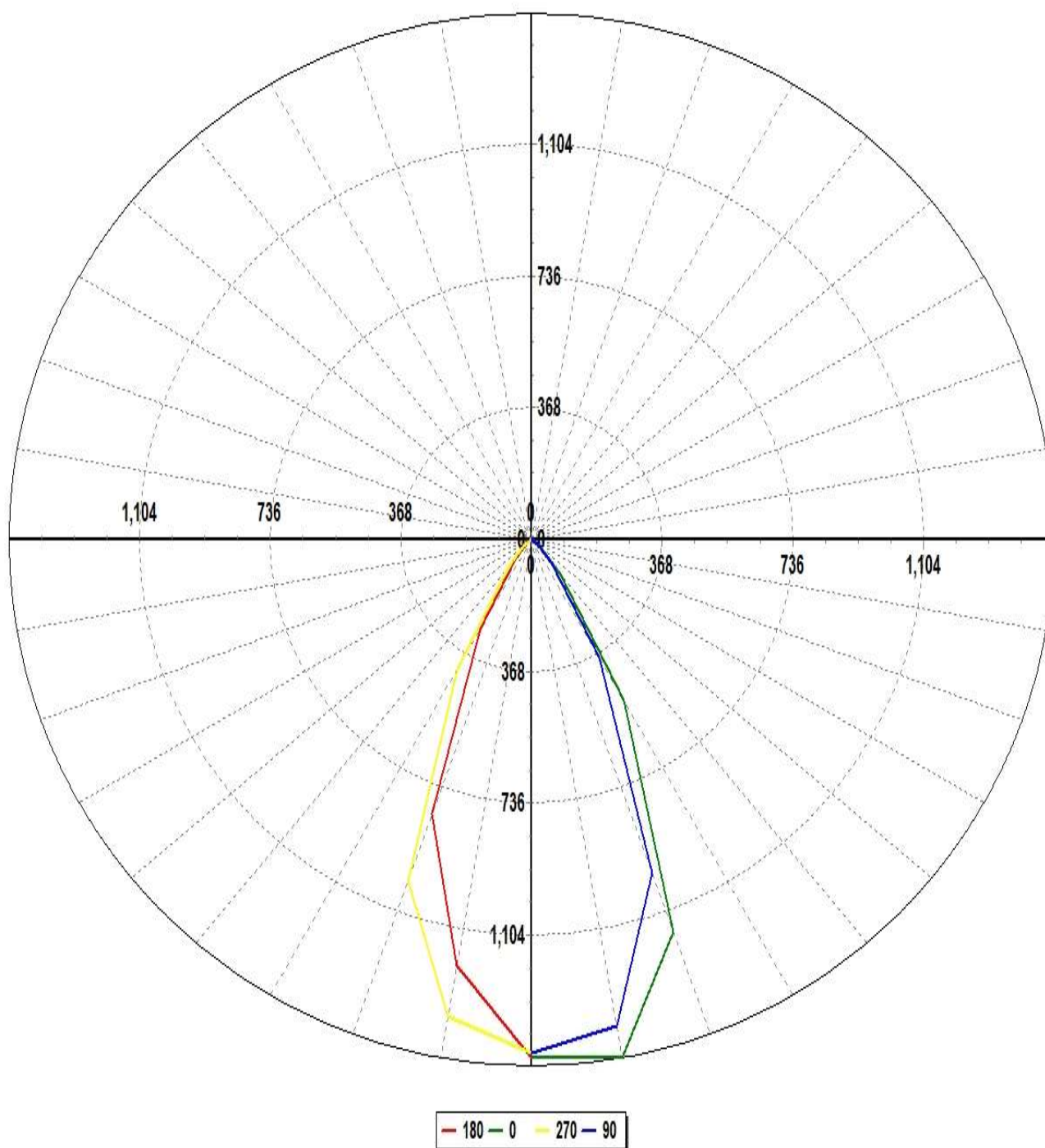
Operator

Total flux (lm) 216

Power Factor 1

Date 2023-06-07 오후 5:46:13

Luminous Intensity Distribution



Luminaire KH FEELUX

Lamp

No. of lamps 1

Voltage (V) 23.982

Report

230607

Lamp flux (lm) 216

Current (A) 0.11725

Filename 230607 MSP3 30K 60도.jdt

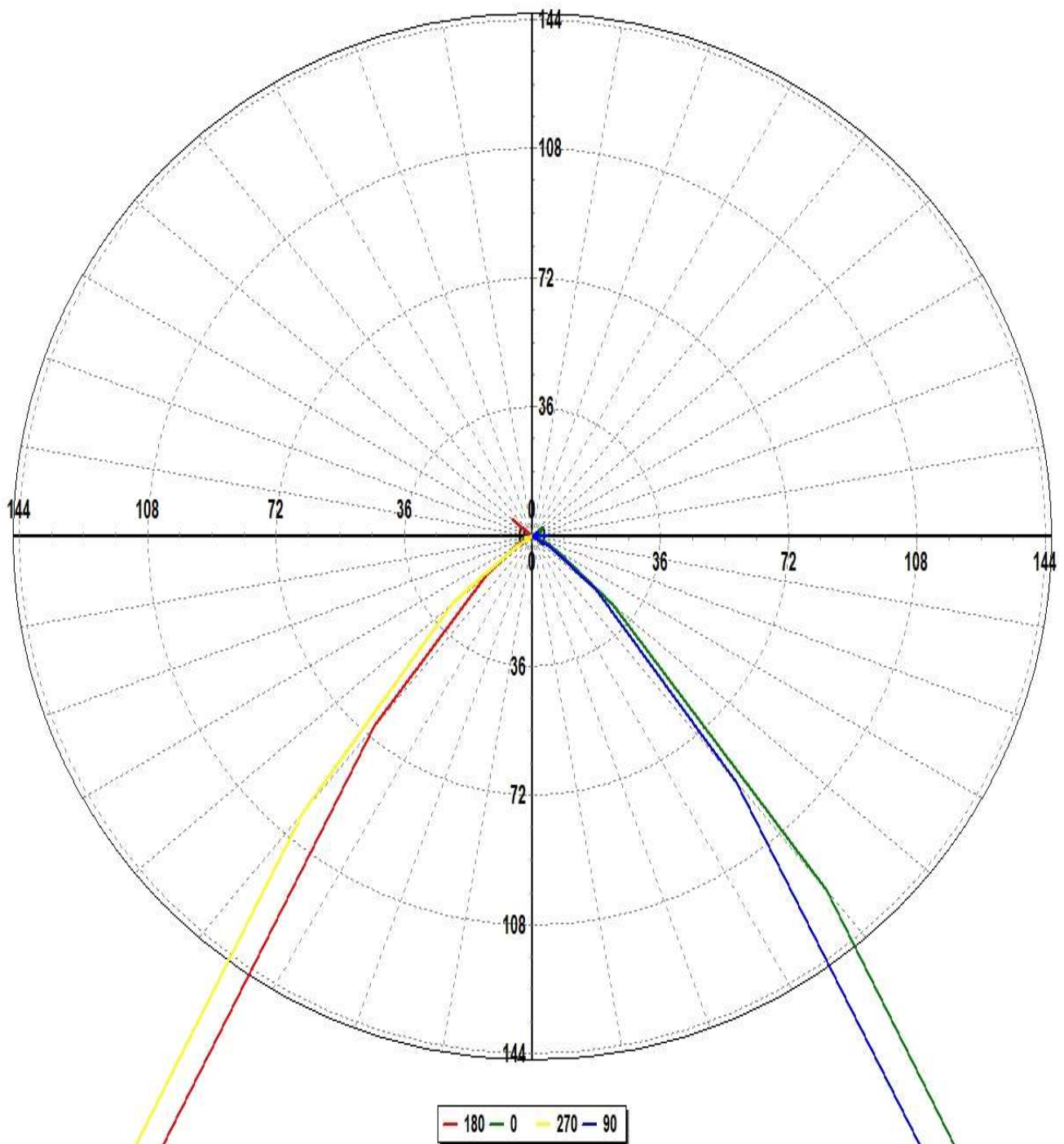
Total flux (lm) 216

Power Factor 1

Operator

Date 2023-06-07 오후 5:46:13

Luminous Intensity Distribution (Lowest 10%)



Luminaire KH FEELUX

Lamp

Report

230607

No. of lamps 1

Voltage (V) 23.982

Filename 230607 MSP3 30K 60도.jdt

Lamp flux (lm) 216

Current (A) 0.11725

Operator

Total flux (lm) 216

Power Factor 1

Date 2023-06-07 오후 5:46:13

Luminous Intensity Data

Maximum (cd) : 320

Minimum (cd) : -1

G/C	0	30	60	90	120	150	180	210	240	270	300
0	312.7	314.35	312.81	309.99	307.62	303.21	312.7	314.35	312.81	309.99	307.62
10	317.83	319.88	315.31	298.12	280.75	260.99	261.03	264.16	277.19	292.49	302.81
20	251.89	252.35	243.31	214.09	186.76	160.13	176.76	182.97	197.37	218.84	242.65
30	112.69	112.83	106.19	82.62	67.88	54.04	62.69	67.69	75.69	90.13	107.44
40	27.75	29.01	27.54	19.26	16.37	12.88	14.88	17.1	19.47	21.65	26.94
50	6.35	6.67	6.85	4.96	4.84	3.96	3.61	4.06	4.7	6.29	6.66
60	1.82	2.03	2.67	1.14	0.75	0.99	1.03	0.97	1.5	1.08	1.5
70	0.77	-0.09	-0.13	-0.08	0.37	-0.08	0.1	0.56	0.65	-0.18	-0.23
80	-0.37	0.39	0.12	-0.3	-0.37	0.16	0.08	-0.49	-0.25	0.47	-0.23
90	0.51	-0.5	0.17	0.97	0.07	0.04	-0.19	-0.44	-0.4	-0.05	0
100	-0.21	0.2	0.37	0.68	-0.09	0.43	-0.11	-0.39	-0.19	-0.42	0.64
110	0.1	0.58	0.52	0.08	0.74	0.47	0.29	0.71	0.55	0.11	-0.58
120	0.6	0.35	0.43	0.43	-0.18	0.4	-0.09	0.69	0.61	-0.05	0.56
130	0.86	0.51	1.1	0.38	0.37	1.12	1.57	0.66	0.68	0.03	0.04

Luminaire KH FEELUX

Lamp

Report

230607

No. of lamps 1

Voltage (V) 23.982

Filename 230607 MSP3 30K 60도.jdt

Lamp flux (lm) 216

Current (A) 0.11725

Operator

Total flux (lm) 216

Power Factor 1

Date 2023-06-07 오후 5:46:13

Luminous Intensity Data (Continued)

Maximum (cd) : 320

Minimum (cd) : -1

G/C	330	360
0	303.21	312.7
10	315.41	317.83
20	265.74	251.89
30	131.21	112.69
40	38.12	27.75
50	10	6.35
60	2.81	1.82
70	0.35	0.77
80	-0.39	-0.37
90	-0.21	0.51
100	-0.25	-0.21
110	-0.46	0.1
120	0.22	0.6
130	-0.01	0.86

Luminaire KH FEELUX

Lamp

Report

230607

No. of lamps 1

Voltage (V) 23.982

Filename 230607 MSP3 30K 60도.jdt

Lamp flux (lm) 216

Current (A) 0.11725

Operator

Total flux (lm) 216

Power Factor 1

Date 2023-06-07 오후 5:46:13

Luminous Flux Table

Total Lamp Lumens: 215.93

Luminaire Efficiency (lm/W): 76.79

CIE Classification: Direct

Elevation	Lumens	Cumulative	Lamp %	Luminaire %
0	7.41	7.41	3.43	3.43
10	55.57	62.98	29.17	29.17
20	80.94	143.92	66.66	66.65
30	48.88	192.80	89.30	89.29
40	15.90	208.69	96.66	96.65
50	4.82	213.52	98.90	98.88
60	1.45	214.96	99.56	99.55
70	0.17	215.13	99.64	99.63
80	-0.11	215.03	99.60	99.58
90	0.00	215.02	99.59	99.58
100	0.06	215.08	99.62	99.61
110	0.27	215.35	99.75	99.73
120	0.31	215.66	99.89	99.88
130	0.26	215.93	100.01	100.00

Luminaire KH FEELUX

Lamp

Report

230607

No. of lamps 1

Voltage (V) 23.982

Filename 230607 MSP3 30K 60도.jdt

Lamp flux (lm) 216

Current (A) 0.11725

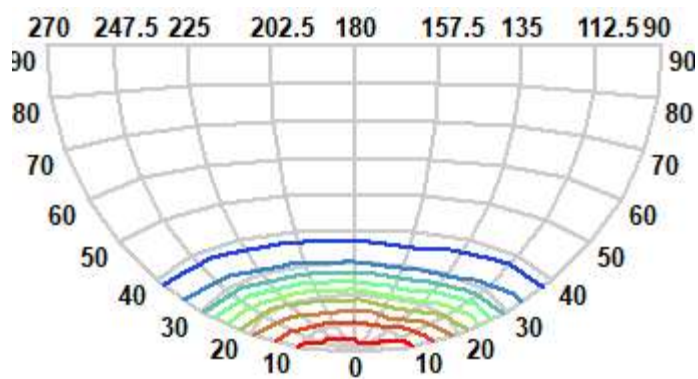
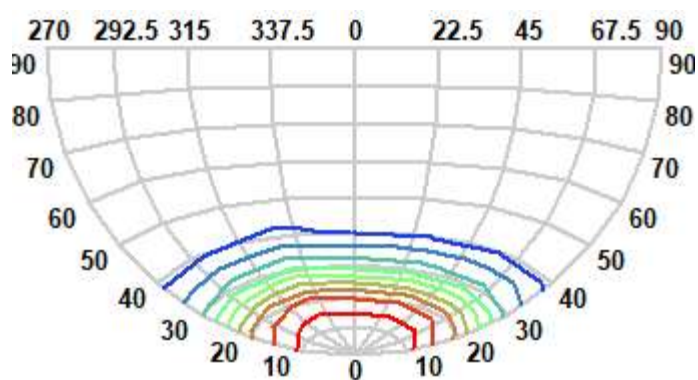
Operator

Total flux (lm) 216

Power Factor 1

Date 2023-06-07 오후 5:46:13

IsoCandela (Type C)



Luminaire KH FEELUX

Lamp

Report

230607

No. of lamps 1

Voltage (V) 23.982

Filename 230607 MSP3 30K 60도.jdt

Lamp flux (lm) 216

Current (A) 0.11725

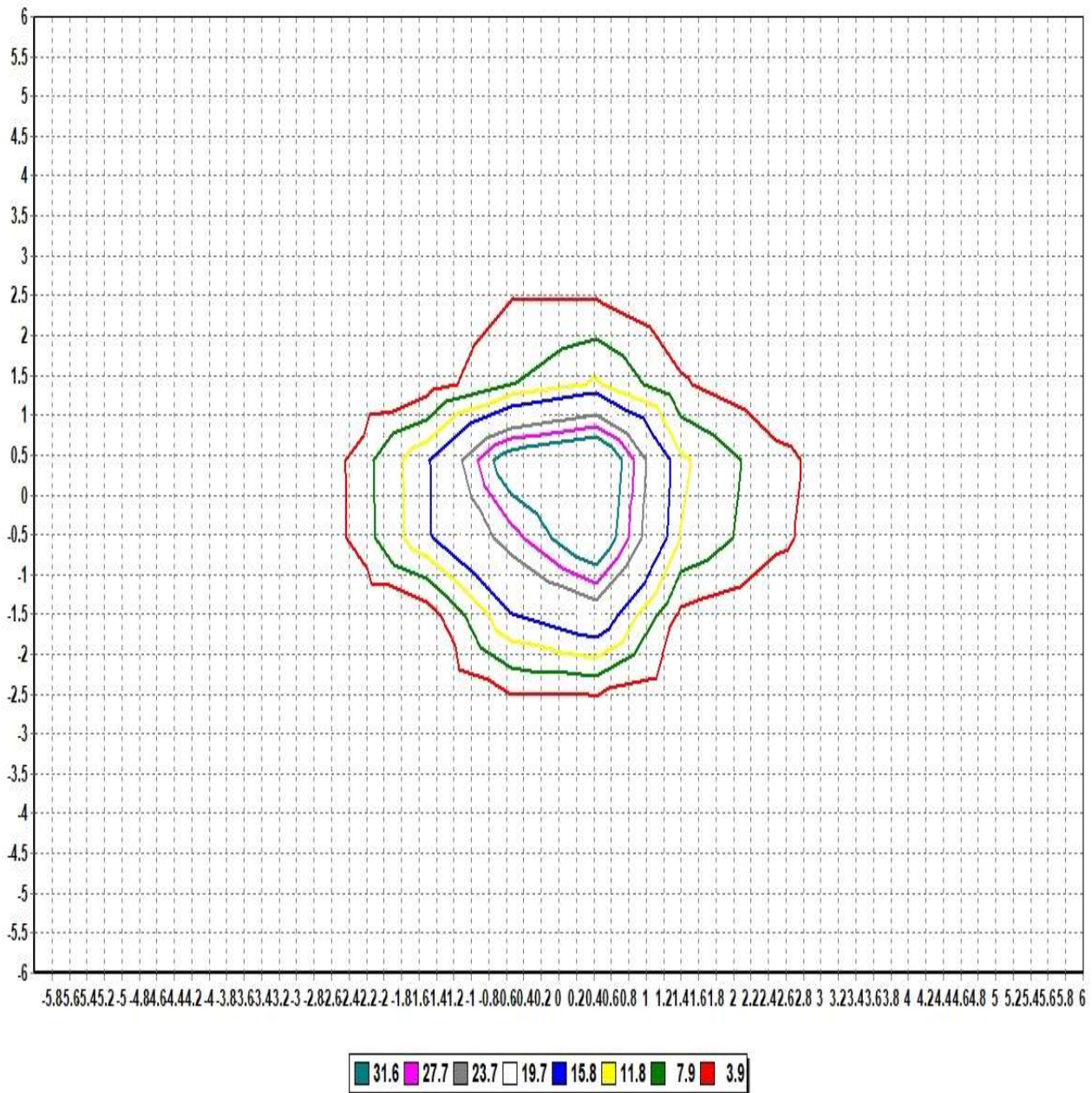
Operator

Total flux (lm) 216

Power Factor 1

Date 2023-06-07 오후 5:46:13

IsoLux Diagram (Ground)



Pole Height (m): 2.7

Area Width (m): 12

Total Optical Solution Provider

Luminaire KH FEELUX

Lamp

Report

230607

No. of lamps 1

Voltage (V) 23.982

Filename 230607 MSP3 30K 60도.jdt

Lamp flux (lm) 216

Current (A) 0.11725

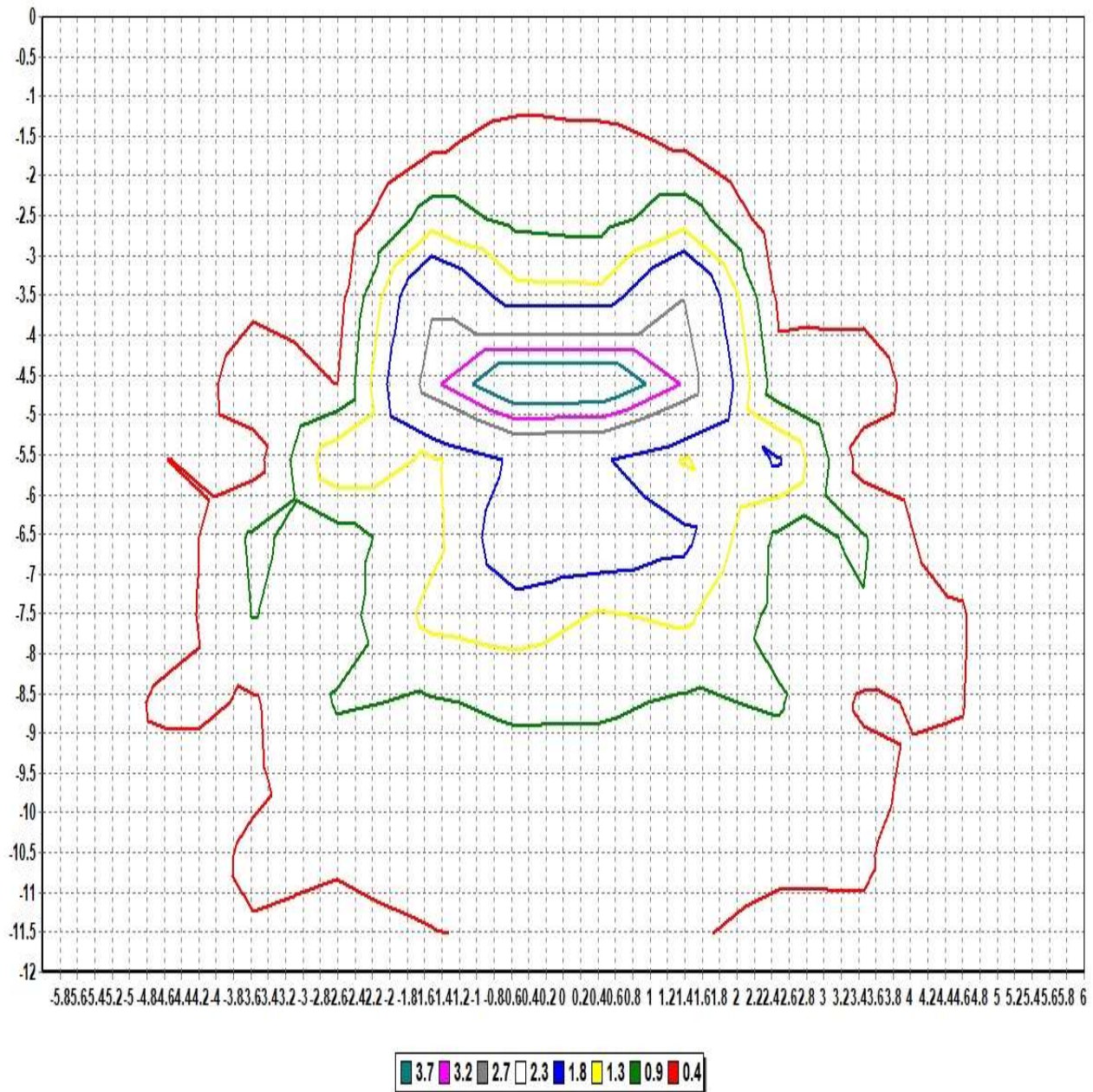
Operator

Total flux (lm) 216

Power Factor 1

Date 2023-06-07 오후 5:46:13

IsoLux Diagram (Wall)



Pole Height (m): 2.7

Wall Distance (m): 2.7

Aiming Plane: 0

Wall Height (m): 12

Total Optical Solution Provider

Luminaire KH FEELUX

Lamp

No. of lamps	1	Voltage (V)	23.982
Lamp flux (lm)	216	Current (A)	0.11725
Total flux (lm)	216	Power Factor	1

Report 230607

Filename 230607 MSP3 30K 60도.jdt

Operator

Date 2023-06-07 오후 5:46:13

Illuminance Levels (Ground)

6.00	0.00	0.00	0.00	0.00	0.00	0.01	0.00	0.01	0.01	0.00	0.00	0.01	0.01
5.00	0.00	0.00	0.00	0.01	0.04	0.07	0.06	0.07	0.06	0.01	0.01	0.00	0.01
4.00	0.00	0.00	0.03	0.06	0.02	0.07	0.06	0.07	0.05	0.09	0.05	0.01	0.00
3.00	0.00	0.00	0.05	0.04	0.43	0.21	0.32	0.29	0.62	0.06	0.08	0.01	0.00
2.00	0.00	0.04	0.02	0.31	0.44	1.17	2.94	2.00	0.66	0.62	0.05	0.06	0.01
1.00	0.00	0.04	0.04	0.19	1.12	9.99	33.42	13.88	2.00	0.29	0.10	0.10	0.01
0.00	0.00	0.05	0.05	0.24	2.24	29.22	42.89	35.71	4.07	0.44	0.09	0.08	0.01
-1.00	0.00	0.05	0.04	0.17	1.17	8.79	32.82	12.38	1.96	0.34	0.09	0.09	0.01
-2.00	0.00	0.04	0.02	0.34	0.37	1.21	3.23	1.83	0.59	0.83	0.04	0.07	0.01
-3.00	0.00	0.01	0.05	0.04	0.43	0.19	0.38	0.28	0.51	0.05	0.12	0.02	0.00
-4.00	0.00	0.00	0.03	0.06	0.03	0.06	0.08	0.06	0.04	0.08	0.05	0.01	0.00
-5.00	0.00	0.00	0.01	0.01	0.04	0.07	0.08	0.06	0.06	0.00	0.00	0.00	0.01
-6.00	0.00	0.01	0.00	0.00	0.01	0.00	0.00	0.01	0.00	0.00	0.00	0.01	0.00
-6.00	-5.00	-4.00	-3.00	-2.00	-1.00	0.00	1.00	2.00	3.00	4.00	5.00	6.00	

Illum. (Max.) : 42.894

Illum. (Min.) : -0.0007

Illum. (Avg.) : 1.5215

All illuminance level values are in lux.



Luminaire KH FEELUX

Lamp

Report

230607

No. of lamps 1

Voltage (V) 23.982

Filename 230607 MSP3 30K 60도.jdt

Lamp flux (lm) 216

Current (A) 0.11725

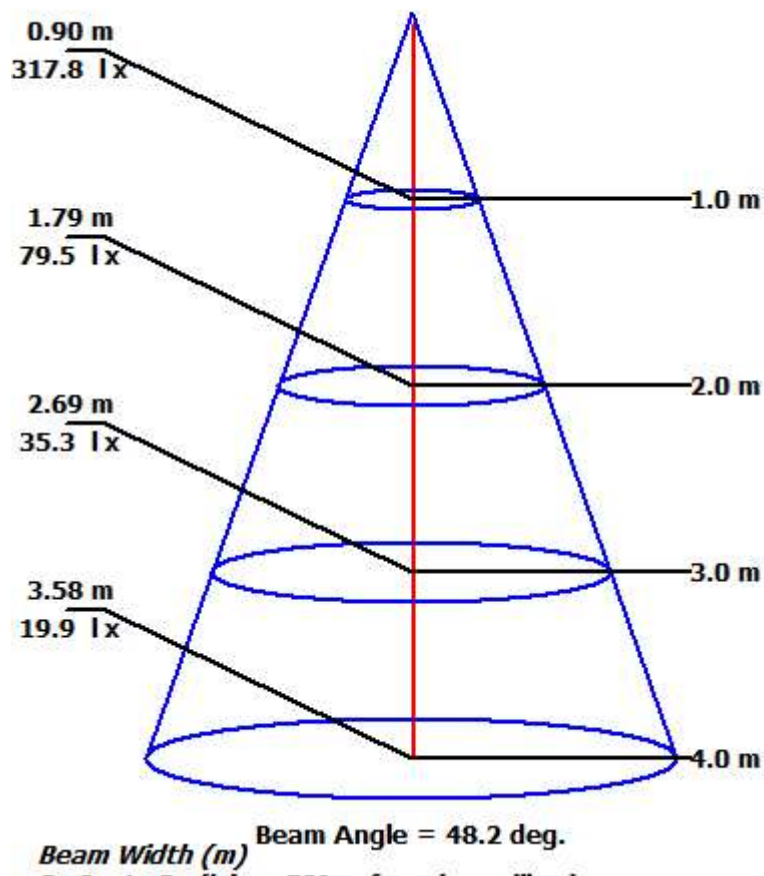
Operator

Total flux (lm) 216

Power Factor 1

Date 2023-06-07 오후 5:46:13

Illuminance Cone Diagram



Luminaire KH FEELUX

Lamp

Report 230607

No. of lamps 1 Voltage (V) 23.982

Filename 230607 MSP3 30K 60도.jdt

Lamp flux (lm) 216 Current (A) 0.11725

Operator

Total flux (lm) 216 Power Factor 1

Date 2023-06-07 오후 5:46:13

Coefficient of Utilization

	Refl. Ceiling (%)	80%	80%	80%	70%	70%	70%	50%	50%	50%	30%	30%	30%	10%	10%	10%	0%
	Refl. Wall (%)	50%	30%	10%	50%	30%	10%	50%	30%	10%	50%	30%	10%	50%	30%	10%	0%
Eff. Floor Cavity	Refl.	20%	20%	20%	20%	20%	20%	20%	20%	20%	20%	20%	20%	20%	20%	20%	20%
Room CR	0	0.00	0.00	0.00	0.00	0.00	0.00	0.00	0.00	0.00	0.00	0.00	0.00	0.00	0.00	0.00	0.00
Room CR	1	0.00	0.00	0.00	0.00	0.00	0.00	0.00	0.00	0.00	0.00	0.00	0.00	0.00	0.00	0.00	0.00
Room CR	2	0.00	0.00	0.00	0.00	0.00	0.00	0.00	0.00	0.00	0.00	0.00	0.00	0.00	0.00	0.00	0.00
Room CR	3	0.00	0.00	0.00	0.00	0.00	0.00	0.00	0.00	0.00	0.00	0.00	0.00	0.00	0.00	0.00	0.00
Room CR	4	0.00	0.00	0.00	0.00	0.00	0.00	0.00	0.00	0.00	0.00	0.00	0.00	0.00	0.00	0.00	0.00
Room CR	5	0.00	0.00	0.00	0.00	0.00	0.00	0.00	0.00	0.00	0.00	0.00	0.00	0.00	0.00	0.00	0.00
Room CR	6	0.00	0.00	0.00	0.00	0.00	0.00	0.00	0.00	0.00	0.00	0.00	0.00	0.00	0.00	0.00	0.00
Room CR	7	0.00	0.00	0.00	0.00	0.00	0.00	0.00	0.00	0.00	0.00	0.00	0.00	0.00	0.00	0.00	0.00
Room CR	8	0.00	0.00	0.00	0.00	0.00	0.00	0.00	0.00	0.00	0.00	0.00	0.00	0.00	0.00	0.00	0.00
Room CR	9	0.00	0.00	0.00	0.00	0.00	0.00	0.00	0.00	0.00	0.00	0.00	0.00	0.00	0.00	0.00	0.00
Room CR	10	0.00	0.00	0.00	0.00	0.00	0.00	0.00	0.00	0.00	0.00	0.00	0.00	0.00	0.00	0.00	0.00